

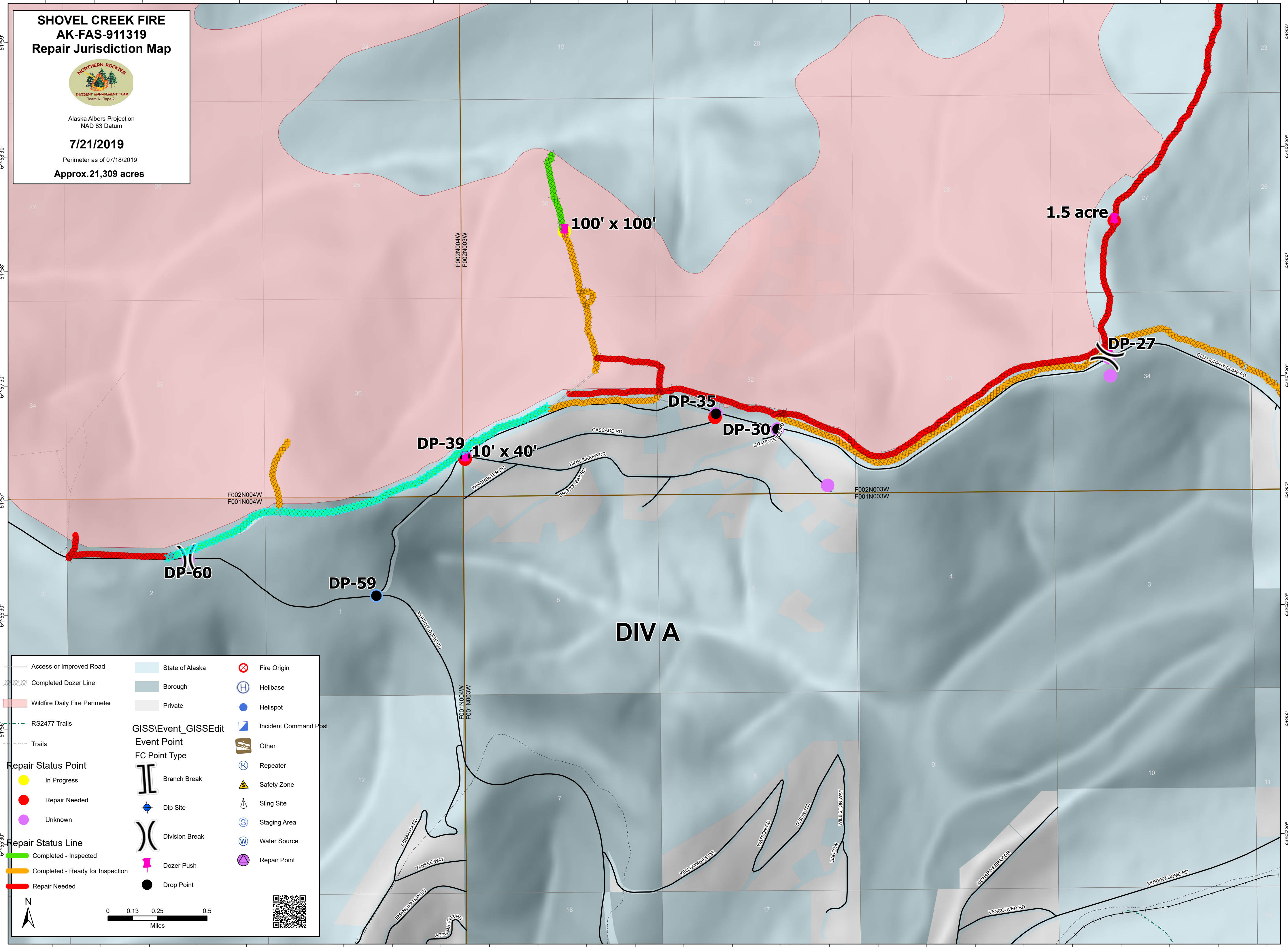
-148°19'30" -148°19' -148°18'30" -148°18' -148°17'30" -148°17' -148°16'30" -148°16' -148°15'30" -148°15' -148°14'30" -148°14' -148°13'30" -148°13' -148°12'30" -148°12' -148°11'30" -148°11' -148°10'30" -148°10' -148°9'30" -148°9' -148°8'30" -148°8' -148°7'30" -148°7'

SHOVEL CREEK FIRE
AK-FAS-911319
Repair Jurisdiction Map




Alaska Albers Projection
 NAD 83 Datum

7/21/2019
 Perimeter as of 07/18/2019
Approx. 21,309 acres



— Access or Improved Road	State of Alaska	⊗ Fire Origin
⊗⊗⊗ Completed Dozer Line	Borough	Ⓜ Helibase
— Wildfire Daily Fire Perimeter	Private	● Helispot
⋯ RS2477 Trails		🏠 Incident Command Post
⋯ Trails		🛠 Other
Repair Status Point	GISS\Event_GISSEdit	Ⓜ Repeater
● In Progress	Event Point	⚠ Safety Zone
● Repair Needed	FC Point Type	📍 Sling Site
● Unknown	Branch Break	📍 Staging Area
Repair Status Line	⊕ Dip Site	📍 Water Source
— Completed - Inspected	⌢ Division Break	⊗ Repair Point
— Completed - Ready for Inspection	📍 Dozer Push	
— Repair Needed	● Drop Point	

0 0.13 0.25 0.5 Miles



-148°19'30" -148°19' -148°18'30" -148°18' -148°17'30" -148°17' -148°16'30" -148°16' -148°15'30" -148°15' -148°14'30" -148°14' -148°13'30" -148°13' -148°12'30" -148°12' -148°11'30" -148°11' -148°10'30" -148°10' -148°9'30" -148°9' -148°8'30" -148°8' -148°7'30" -148°7'