

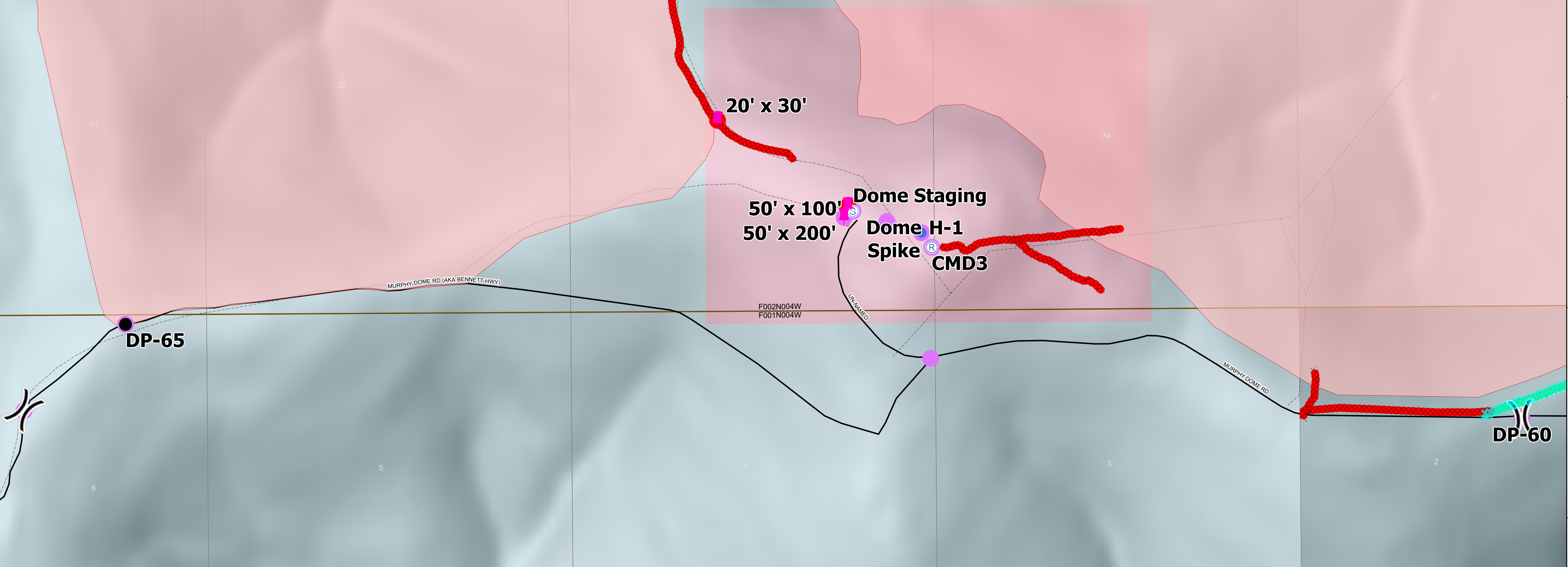
-148°26'30" -148°26' -148°25'30" -148°25' -148°24'30" -148°24' -148°23'30" -148°23' -148°22'30" -148°22' -148°21'30" -148°21' -148°20'30" -148°20' -148°19'30" -148°19' -148°18'30" -148°18'

SHOVEL CREEK FIRE
AK-FAS-911319
Repair Jurisdiction Map




Alaska Albers Projection
 NAD 83 Datum

7/21/2019
 Perimeter as of 07/18/2019
Approx. 21,309 acres



XXXXX Completed Dozer Line	Military	● Drop Point
Wildfire Daily Fire Perimeter	State of Alaska	⊗ Fire Origin
Other	Borough	⊕ Helibase
Trails	GISSEvent_GISSEdit	⊙ Helispot
Repair Status Point	Event Point	▢ Incident Command Post
● Repair Needed	FC Point Type	⊞ Other
● Unknown	Branch Break	Ⓡ Repeater
Repair Status Line	⊕ Dip Site	⚠ Safety Zone
▬ Completed - Inspected	⊗ Division Break	⚙ Sling Site
▬ Repair Needed	⊞ Dozer Push	Ⓢ Staging Area
		Ⓜ Water Source
		⊞ Repair Point

0 0.07 0.15 0.3
Miles



-148°26'30" -148°26' -148°25'30" -148°25' -148°24'30" -148°24' -148°23'30" -148°23' -148°22'30" -148°22' -148°21'30" -148°21' -148°20'30" -148°20' -148°19'30" -148°19' -148°18'30" -148°18'