

**SHOVEL CREEK FIRE
AK-FAS-911319
Repair Jurisdiction Map**



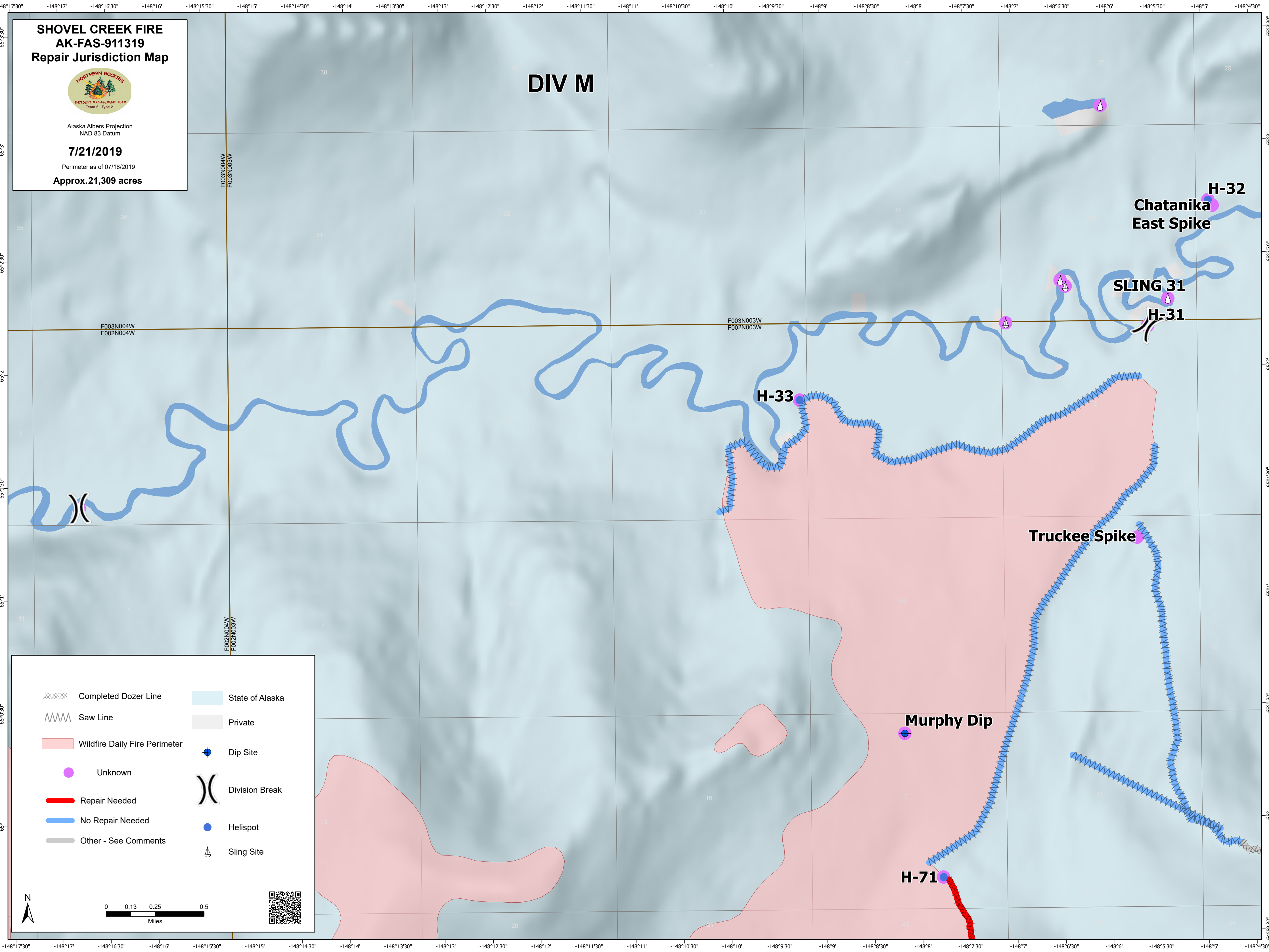
Alaska Albers Projection
NAD 83 Datum

7/21/2019

Perimeter as of 07/18/2019

Approx. 21,309 acres

DIV M



- | | | |
|------------|-------------------------------|-----------------|
| XXXXXX | Completed Dozer Line | State of Alaska |
| ~~~~~ | Saw Line | Private |
| Red Area | Wildfire Daily Fire Perimeter | Dip Site |
| Purple Dot | Unknown | Division Break |
| Red Line | Repair Needed | Helispot |
| Blue Line | No Repair Needed | Sling Site |
| Grey Line | Other - See Comments | |

