

SHOVEL CREEK FIRE
AK-FAS-911319
Repair Jurisdiction Map

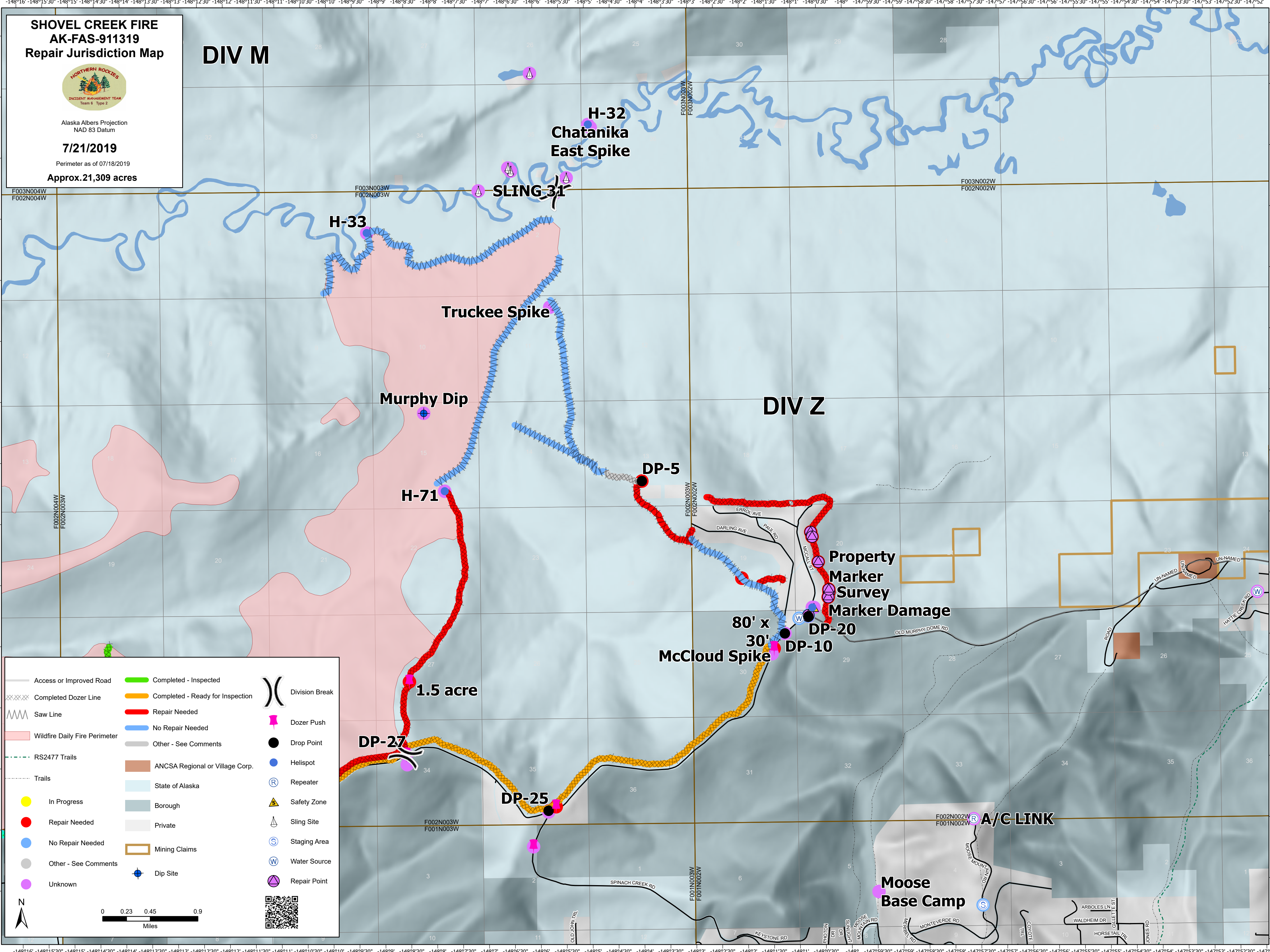


Alaska Albers Projection
 NAD 83 Datum

7/21/2019
 Perimeter as of 07/18/2019
Approx. 21,309 acres


DIV M

DIV Z



| | | | | | |
|--|-------------------------------|--|----------------------------------|--|----------------|
| | Access or Improved Road | | Completed - Inspected | | Division Break |
| | Completed Dozer Line | | Completed - Ready for Inspection | | Dozer Push |
| | Saw Line | | Repair Needed | | Drop Point |
| | Wildfire Daily Fire Perimeter | | No Repair Needed | | Helispot |
| | RS2477 Trails | | Other - See Comments | | Repeater |
| | Trails | | ANCSA Regional or Village Corp. | | Safety Zone |
| | In Progress | | State of Alaska | | Sling Site |
| | Repair Needed | | Borough | | Staging Area |
| | No Repair Needed | | Private | | Water Source |
| | Other - See Comments | | Mining Claims | | Repair Point |
| | Unknown | | Dip Site | | |

0 0.23 0.45 0.9
Miles



H-32
Chatanika East Spike

H-33

SLING 31

Truckee Spike

Murphy Dip

H-71

DP-5

DP-20

DP-10

80' x 30'
McCloud Spike

1.5 acre

DP-27

DP-25

Property Marker Survey
Marker Damage

A/C LINK

Moose Base Camp