

**SHOVEL CREEK FIRE**  
**AK-FAS-911319**  
**Aviation Map**

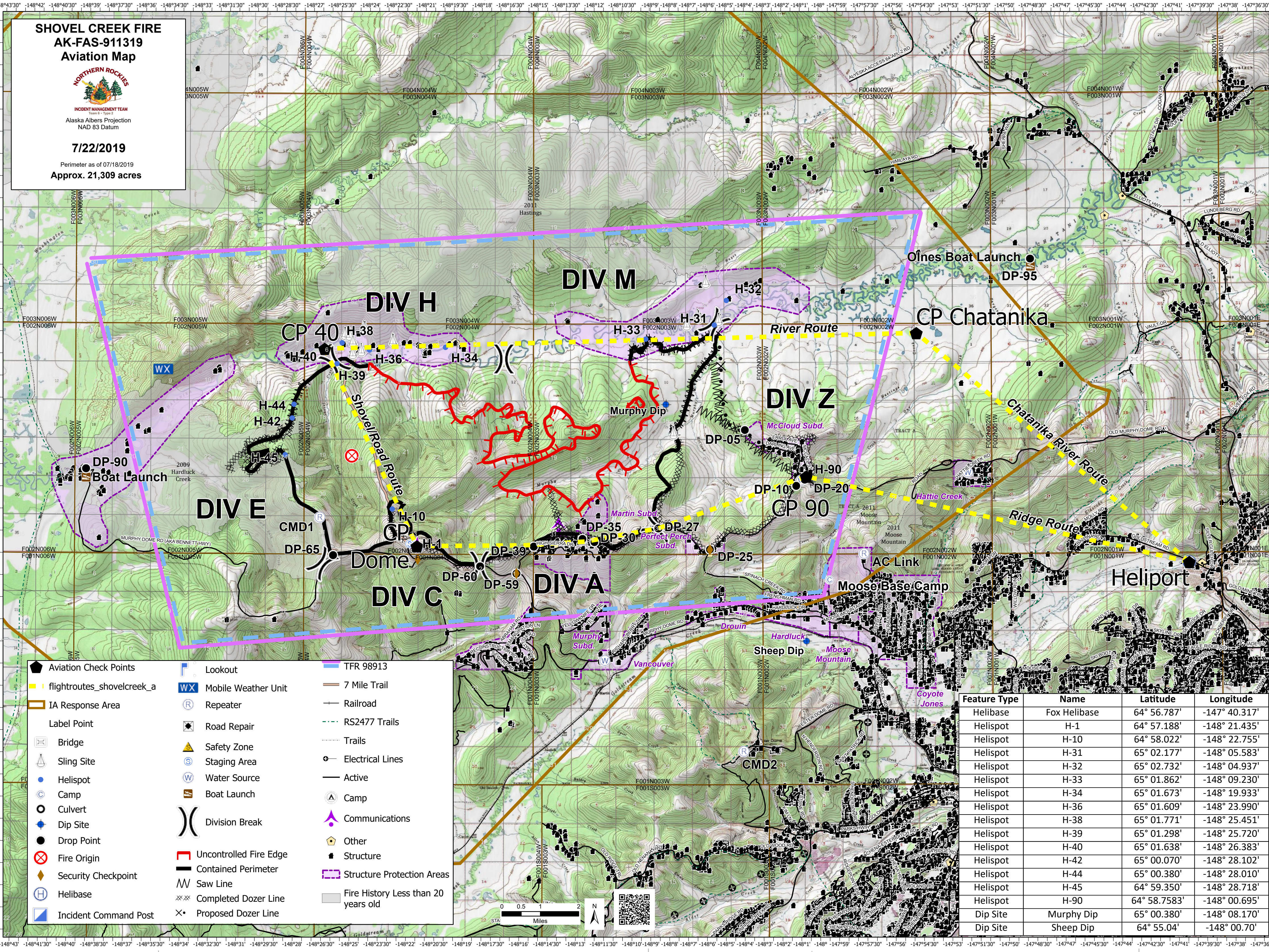


INCIDENT MANAGEMENT TEAM  
 Team 6 - Type 2

Alaska Albers Projection  
 NAD 83 Datum

**7/22/2019**

Perimeter as of 07/18/2019  
**Approx. 21,309 acres**



- Aviation Check Points
- flightroutes\_shovelcreek\_a
- IA Response Area
- Label Point**
- Bridge
- Sling Site
- Helispot
- Camp
- Culvert
- Dip Site
- Drop Point
- Fire Origin
- Security Checkpoint
- Helibase
- Incident Command Post
- Lookout
- Mobile Weather Unit
- Repeater
- Road Repair
- Safety Zone
- Staging Area
- Water Source
- Boat Launch
- Division Break
- Uncontrolled Fire Edge
- Contained Perimeter
- Saw Line
- Completed Dozer Line
- Proposed Dozer Line
- TFR 98913
- 7 Mile Trail
- Railroad
- RS2477 Trails
- Trails
- Electrical Lines
- Active
- Camp
- Communications
- Other
- Structure
- Structure Protection Areas
- Fire History Less than 20 years old

Feature Type	Name	Latitude	Longitude
Helibase	Fox Helibase	64° 56.787'	-147° 40.317'
Helispot	H-1	64° 57.188'	-148° 21.435'
Helispot	H-10	64° 58.022'	-148° 22.755'
Helispot	H-31	65° 02.177'	-148° 05.583'
Helispot	H-32	65° 02.732'	-148° 04.937'
Helispot	H-33	65° 01.862'	-148° 09.230'
Helispot	H-34	65° 01.673'	-148° 19.933'
Helispot	H-36	65° 01.609'	-148° 23.990'
Helispot	H-38	65° 01.771'	-148° 25.451'
Helispot	H-39	65° 01.298'	-148° 25.720'
Helispot	H-40	65° 01.638'	-148° 26.383'
Helispot	H-42	65° 00.070'	-148° 28.102'
Helispot	H-44	65° 00.380'	-148° 28.010'
Helispot	H-45	64° 59.350'	-148° 28.718'
Helispot	H-90	64° 58.7583'	-148° 00.695'
Dip Site	Murphy Dip	65° 00.380'	-148° 08.170'
Dip Site	Sheep Dip	64° 55.04'	-148° 00.70'

