

**SHOVEL CREEK FIRE  
AK-FAS-911319  
OPS Map - No Structures**

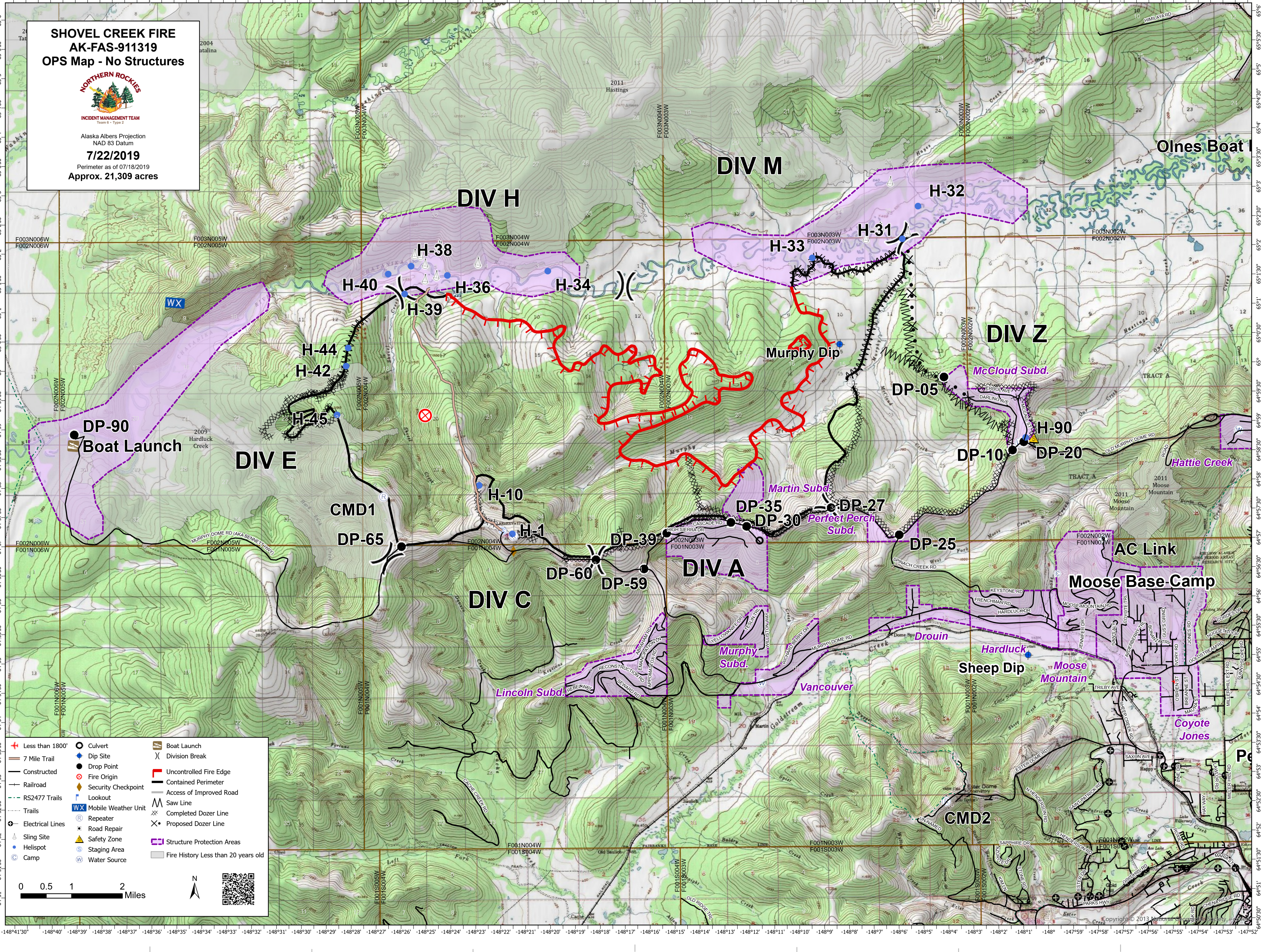


INCIDENT MANAGEMENT TEAM  
Team 6 - Type 2

Alaska Albers Projection  
NAD 83 Datum

**7/22/2019**

Perimeter as of 07/18/2019  
Approx. 21,309 acres



Less than 1800'	Culvert	Boat Launch
7 Mile Trail	Dip Site	Division Break
Constructed	Drop Point	Uncontrolled Fire Edge
Railroad	Fire Origin	Contained Perimeter
RS2477 Trails	Security Checkpoint	Access of Improved Road
Trails	Lookout	Saw Line
Mobile Weather Unit	Repeater	Completed Dozer Line
Electrical Lines	Road Repair	Proposed Dozer Line
Sling Site	Safety Zone	Structure Protection Areas
Helispot	Staging Area	Fire History Less than 20 years old
Camp	Water Source	

