

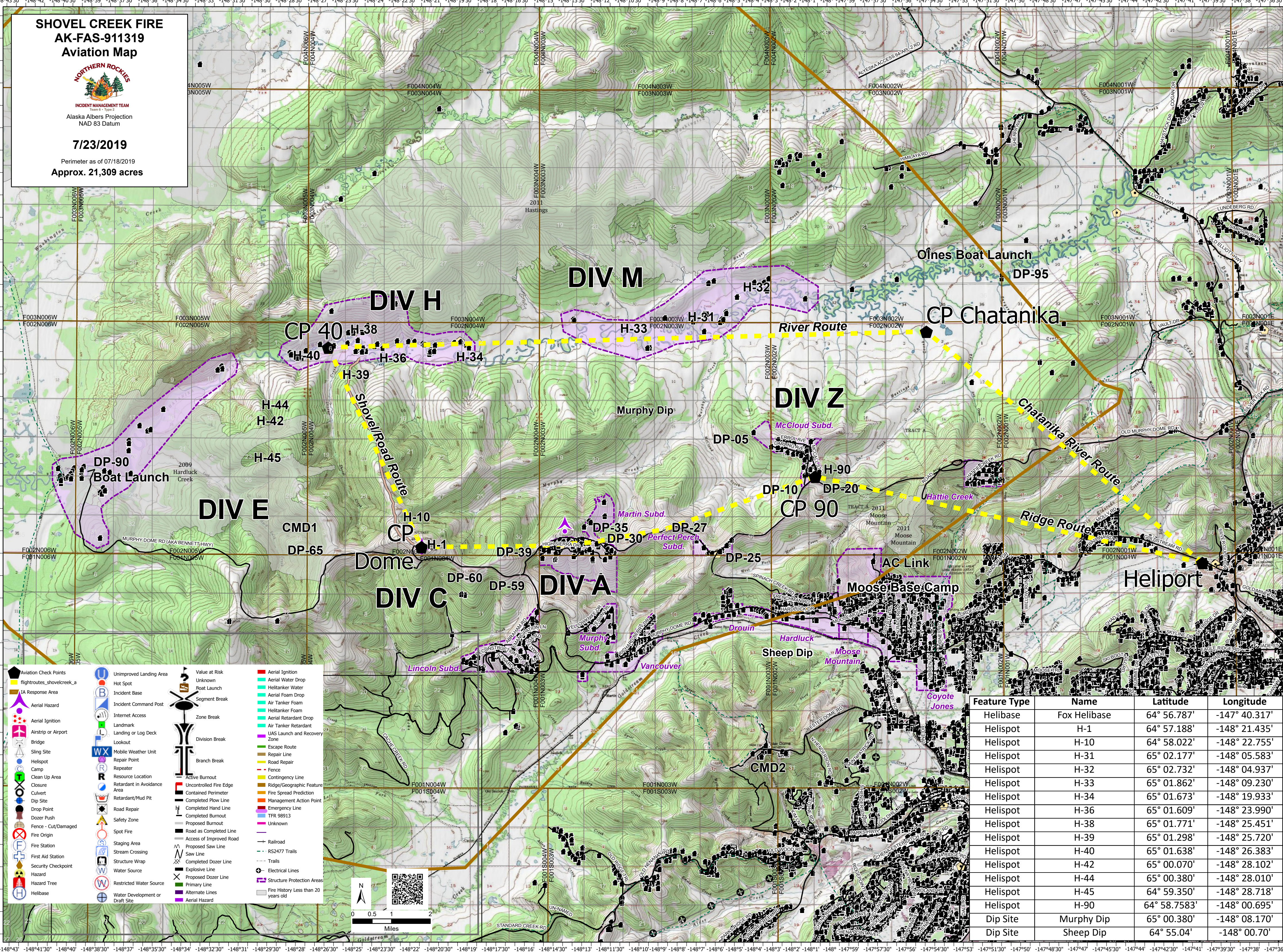
SHOVEL CREEK FIRE
AK-FAS-911319
Aviation Map



INCIDENT MANAGEMENT TEAM
 Team 6 - Type 2
 Alaska Albers Projection
 NAD 83 Datum

7/23/2019

Perimeter as of 07/18/2019
Approx. 21,309 acres



	Aviation Check Points		Aerial Ignition
	Flight routes_shovelcreek_a		Aerial Water Drop
	IA Response Area		Helitanker Water
	Aerial Hazard		Aerial Foam Drop
	Aerial Ignition		Air Tanker Foam
	Airstrip or Airport		Aerial Retardant Drop
	Bridge		Air Tanker Retardant
	Sling Site		UAS Launch and Recovery Zone
	Helispot		Escape Route
	Camp		Repair Line
	Clean Up Area		Road Repair
	Closure		Fence
	Culvert		Contingency Line
	Dip Site		Ridge/Geographic Feature
	Drop Point		Fire Spread Prediction
	Dozer Push		Management Action Point
	Fence - Cut/Damaged		Emergency Line
	Fire Origin		TFR 98913
	Fire Station		Unknown
	First Aid Station		Active Burnout
	Security Checkpoint		Uncontrolled Fire Edge
	Hazard		Contained Perimeter
	Helibase		Completed Plow Line
			Completed Hand Line
			Completed Burnout
			Proposed Burnout
			Road as Completed Line
			Access of Improved Road
			Proposed Saw Line
			Saw Line
			Completed Dozer Line
			Explosive Line
			Proposed Dozer Line
			Primary Line
			Alternate Lines
			Fire History Less than 20 years old
			Value at Risk Unknown
			Roat Launch
			Segment Break
			Zone Break
			Division Break
			Branch Break

Feature Type	Name	Latitude	Longitude
Helibase	Fox Helibase	64° 56.787'	-147° 40.317'
Helispot	H-1	64° 57.188'	-148° 21.435'
Helispot	H-10	64° 58.022'	-148° 22.755'
Helispot	H-31	65° 02.177'	-148° 05.583'
Helispot	H-32	65° 02.732'	-148° 04.937'
Helispot	H-33	65° 01.862'	-148° 09.230'
Helispot	H-34	65° 01.673'	-148° 19.933'
Helispot	H-36	65° 01.609'	-148° 23.990'
Helispot	H-38	65° 01.771'	-148° 25.451'
Helispot	H-39	65° 01.298'	-148° 25.720'
Helispot	H-40	65° 01.638'	-148° 26.383'
Helispot	H-42	65° 00.070'	-148° 28.102'
Helispot	H-44	65° 00.380'	-148° 28.010'
Helispot	H-45	64° 59.350'	-148° 28.718'
Helispot	H-90	64° 58.7583'	-148° 00.695'
Dip Site	Murphy Dip	65° 00.380'	-148° 08.170'
Dip Site	Sheep Dip	64° 55.04'	-148° 00.70'