

SHOVEL CREEK FIRE AK-FAS-911319 Operations Vicinity Map

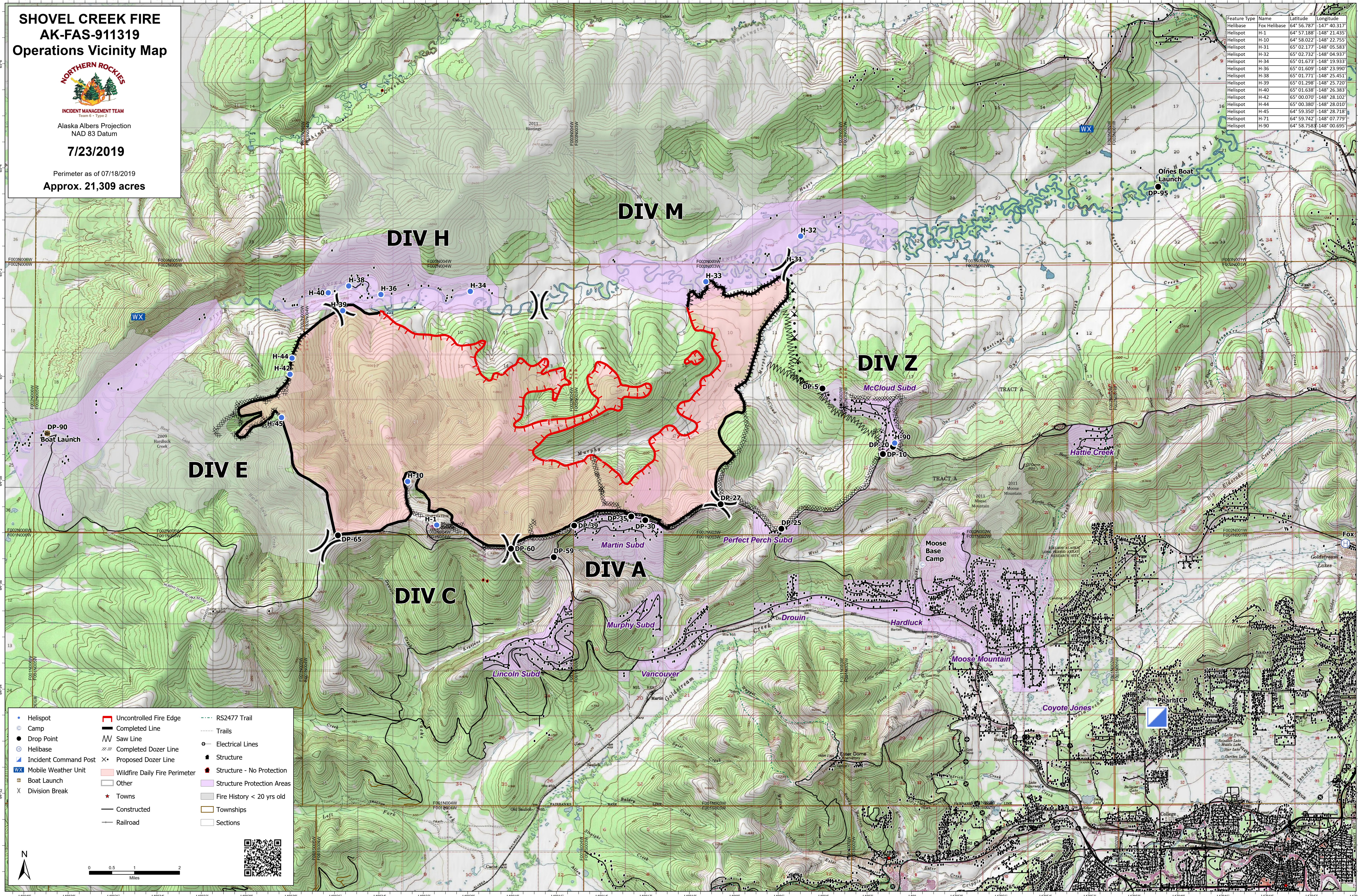


INCIDENT MANAGEMENT TEAM
Team 6 - Type 2
Alaska Albers Projection
NAD 83 Datum

7/23/2019

Perimeter as of 07/18/2019
Approx. 21,309 acres

| Feature Type | Name | Latitude | Longitude |
|--------------|--------------|-------------|---------------|
| Helibase | Fox Helibase | 64° 56.787' | -147° 40.317' |
| Helispot | H-1 | 64° 57.188' | -148° 21.435' |
| Helispot | H-10 | 64° 58.022' | -148° 22.755' |
| Helispot | H-31 | 65° 02.177' | -148° 05.583' |
| Helispot | H-32 | 65° 02.732' | -148° 04.937' |
| Helispot | H-34 | 65° 01.673' | -148° 19.933' |
| Helispot | H-36 | 65° 01.609' | -148° 23.990' |
| Helispot | H-38 | 65° 01.771' | -148° 25.451' |
| Helispot | H-39 | 65° 01.298' | -148° 25.720' |
| Helispot | H-40 | 65° 01.638' | -148° 26.383' |
| Helispot | H-42 | 65° 00.070' | -148° 28.102' |
| Helispot | H-44 | 65° 00.380' | -148° 28.010' |
| Helispot | H-45 | 64° 59.350' | -148° 28.718' |
| Helispot | H-71 | 64° 59.742' | -148° 07.779' |
| Helispot | H-90 | 64° 58.758' | -148° 00.695' |



| | | |
|-------------------------|---------------------------------|------------------------------|
| • Helispot | ■ Uncontrolled Fire Edge | --- RS2477 Trail |
| ● Camp | — Completed Line | --- Trails |
| ○ Helibase | ∩ Saw Line | — Electrical Lines |
| ⊕ Incident Command Post | ⊗ Completed Dozer Line | ■ Structure |
| WX Mobile Weather Unit | ⊗ Proposed Dozer Line | ■ Structure - No Protection |
| ⊗ Boat Launch | ■ Wildfire Daily Fire Perimeter | ■ Structure Protection Areas |
| X Division Break | □ Other | ■ Fire History < 20 yrs old |
| | ★ Towns | ■ Townships |
| | — Constructed | □ Sections |
| | — Railroad | |

0 0.5 1 2 Miles