

**SHOVEL CREEK FIRE
AK-FAS-911319
OPS Map - No Structures**

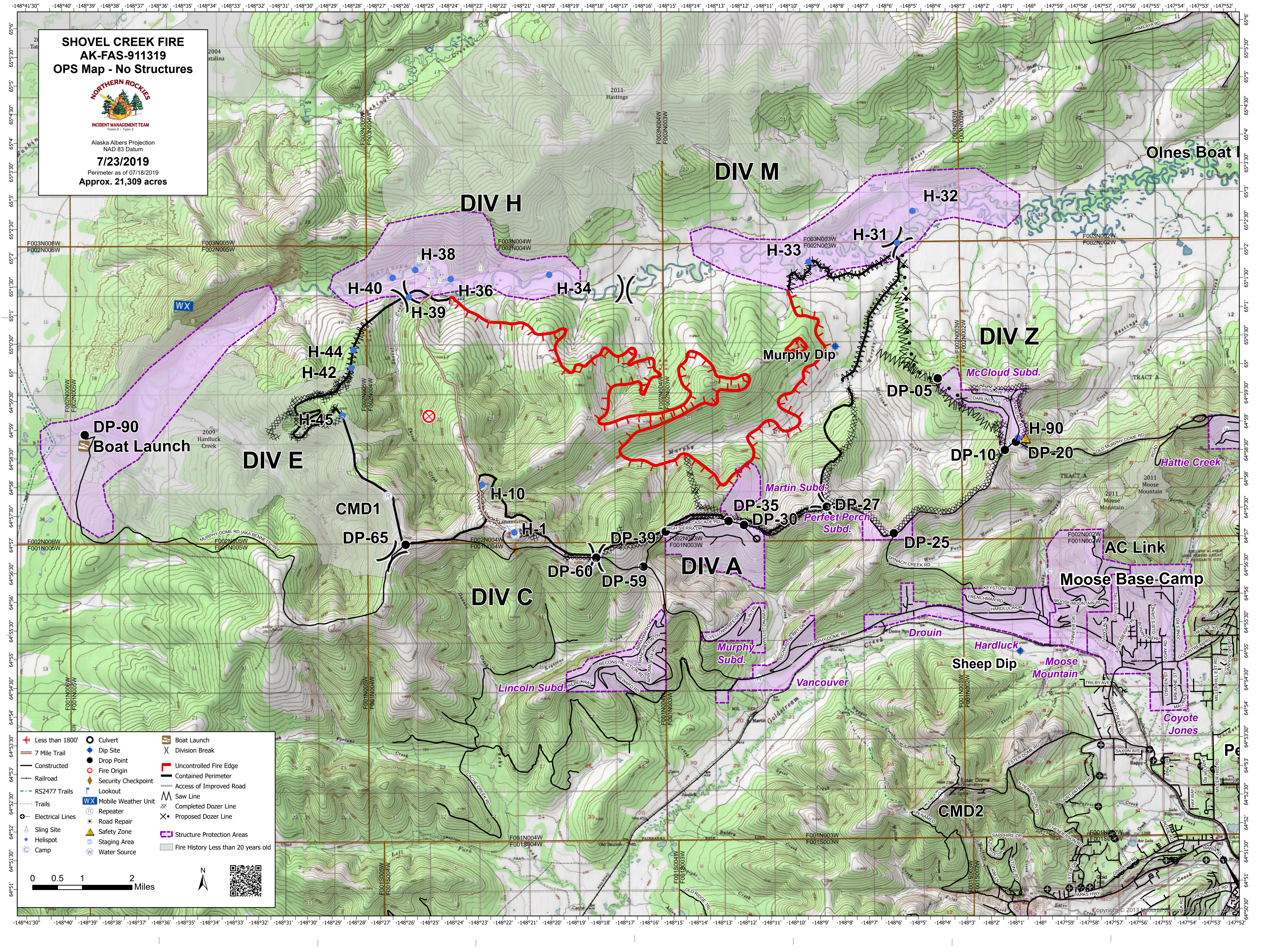


INCIDENT MANAGEMENT TEAM
Team 6 - Type 2

Alaska Albers Projection
NAD 83 Datum

7/23/2019

Perimeter as of 07/18/2019
Approx. 21,309 acres



- | | | | | | |
|---|------------------|---|---------------------|---|-------------------------------------|
| + | Less than 1800' | ○ | Culvert | ⚓ | Boat Launch |
| — | 7 Mile Trail | ● | Dip Site | ⌘ | Division Break |
| — | Constructed | ● | Drop Point | — | Uncontrolled Fire Edge |
| — | Railroad | ● | Fire Origin | — | Contained Perimeter |
| — | RS2477 Trails | ● | Security Checkpoint | — | Access of Improved Road |
| — | Trails | ● | Lookout | — | Saw Line |
| — | Electrical Lines | ● | Mobile Weather Unit | — | Completed Dozer Line |
| — | Repeater | ● | WX | — | Proposed Dozer Line |
| — | Road Repair | ● | Repeater | — | Structure Protection Areas |
| — | Sling Site | ● | Road Repair | — | Fire History Less than 20 years old |
| — | Helispot | ● | Safety Zone | | |
| — | Camp | ● | Staging Area | | |
| — | Water Source | ● | Water Source | | |

