

**SHOVEL CREEK FIRE  
AK-FAS-911319  
Plans MAP Map**



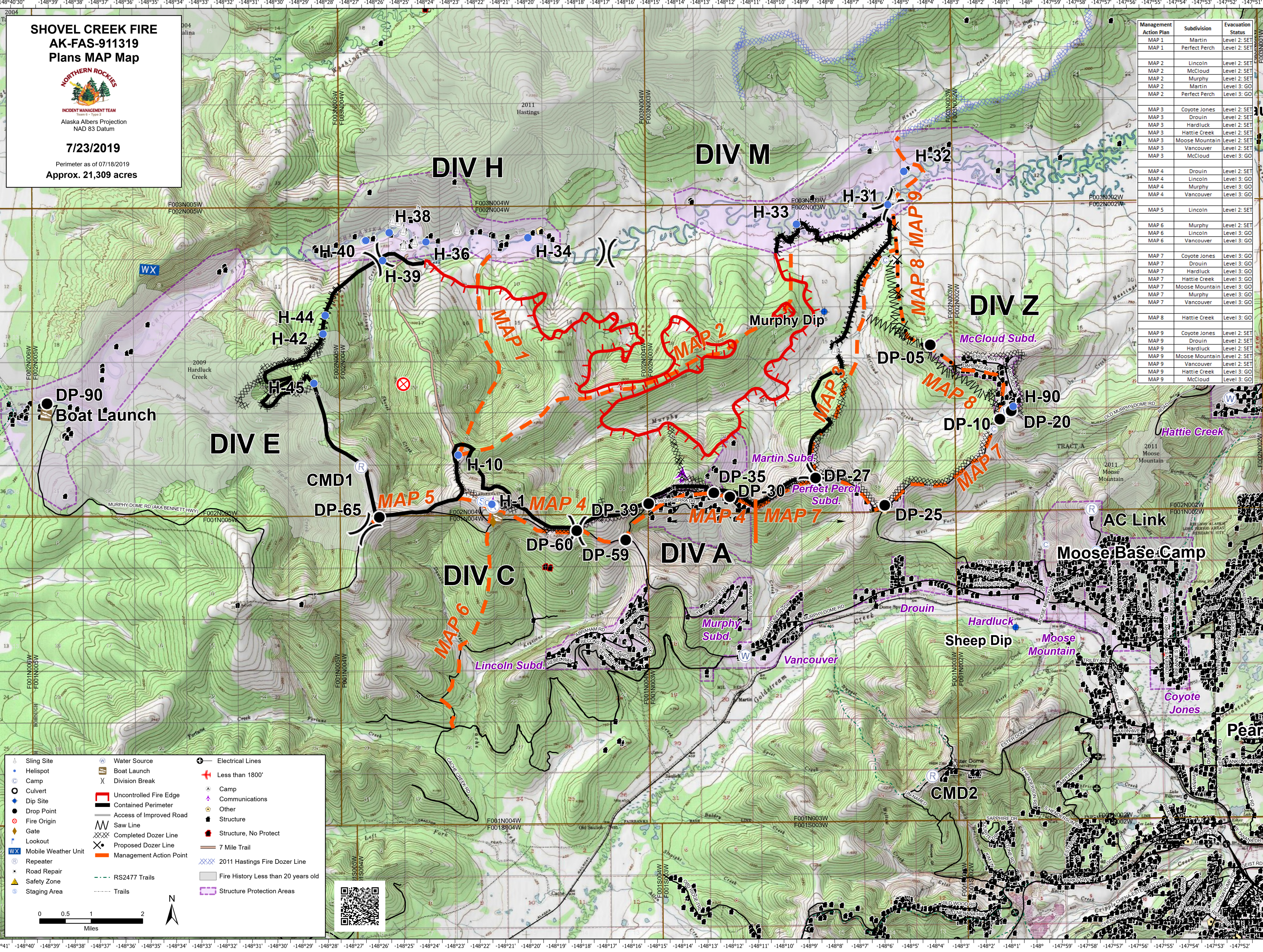
INCIDENT MANAGEMENT TEAM  
Team 6 - Type 2

Alaska Albers Projection  
NAD 83 Datum

**7/23/2019**

Perimeter as of 07/18/2019  
Approx. 21,309 acres

Management Action Plan	Subdivision	Evacuation Status
MAP 1	Martin	Level 2: SET
MAP 1	Perfect Perch	Level 2: SET
MAP 2	Lincoln	Level 2: SET
MAP 2	McCloud	Level 2: SET
MAP 2	Murphy	Level 2: SET
MAP 2	Martin	Level 3: SET
MAP 2	Perfect Perch	Level 3: GO
MAP 3	Coyote Jones	Level 2: SET
MAP 3	Drouin	Level 2: SET
MAP 3	Hardluck	Level 2: SET
MAP 3	Hattie Creek	Level 2: SET
MAP 3	Moose Mountain	Level 2: SET
MAP 3	Vancouver	Level 2: SET
MAP 3	McCloud	Level 3: GO
MAP 4	Drouin	Level 2: SET
MAP 4	Lincoln	Level 3: GO
MAP 4	Murphy	Level 3: GO
MAP 4	Vancouver	Level 3: GO
MAP 5	Lincoln	Level 2: SET
MAP 6	Murphy	Level 2: SET
MAP 6	Lincoln	Level 3: GO
MAP 6	Vancouver	Level 3: GO
MAP 7	Coyote Jones	Level 3: GO
MAP 7	Drouin	Level 3: GO
MAP 7	Hardluck	Level 3: GO
MAP 7	Hattie Creek	Level 3: GO
MAP 7	Moose Mountain	Level 3: GO
MAP 7	Murphy	Level 3: GO
MAP 7	Vancouver	Level 3: GO
MAP 8	Hattie Creek	Level 3: GO
MAP 9	Coyote Jones	Level 2: SET
MAP 9	Drouin	Level 2: SET
MAP 9	Hardluck	Level 2: SET
MAP 9	Moose Mountain	Level 2: SET
MAP 9	Vancouver	Level 2: SET
MAP 9	Hattie Creek	Level 3: GO
MAP 9	McCloud	Level 3: GO



Sling Site	Water Source	Electrical Lines
Helispot	Boat Launch	Less than 1800'
Camp	Division Break	Camp
Culvert	Uncontrolled Fire Edge	Communications
Dip Site	Contained Perimeter	Other
Drop Point	Access of Improved Road	Structure
Fire Origin	Saw Line	Structure, No Protect
Gate	Completed Dozer Line	7 Mile Trail
Lookout	Proposed Dozer Line	Fire History Less than 20 years old
Mobile Weather Unit	Management Action Point	Structure Protection Areas
Repeater	2011 Hastings Fire Dozer Line	
Road Repair	RS2477 Trails	
Safety Zone	Trails	
Staging Area		

