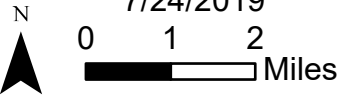


SHOVEL CREEK FIRE
AK-FAS-911319
Aviation Map

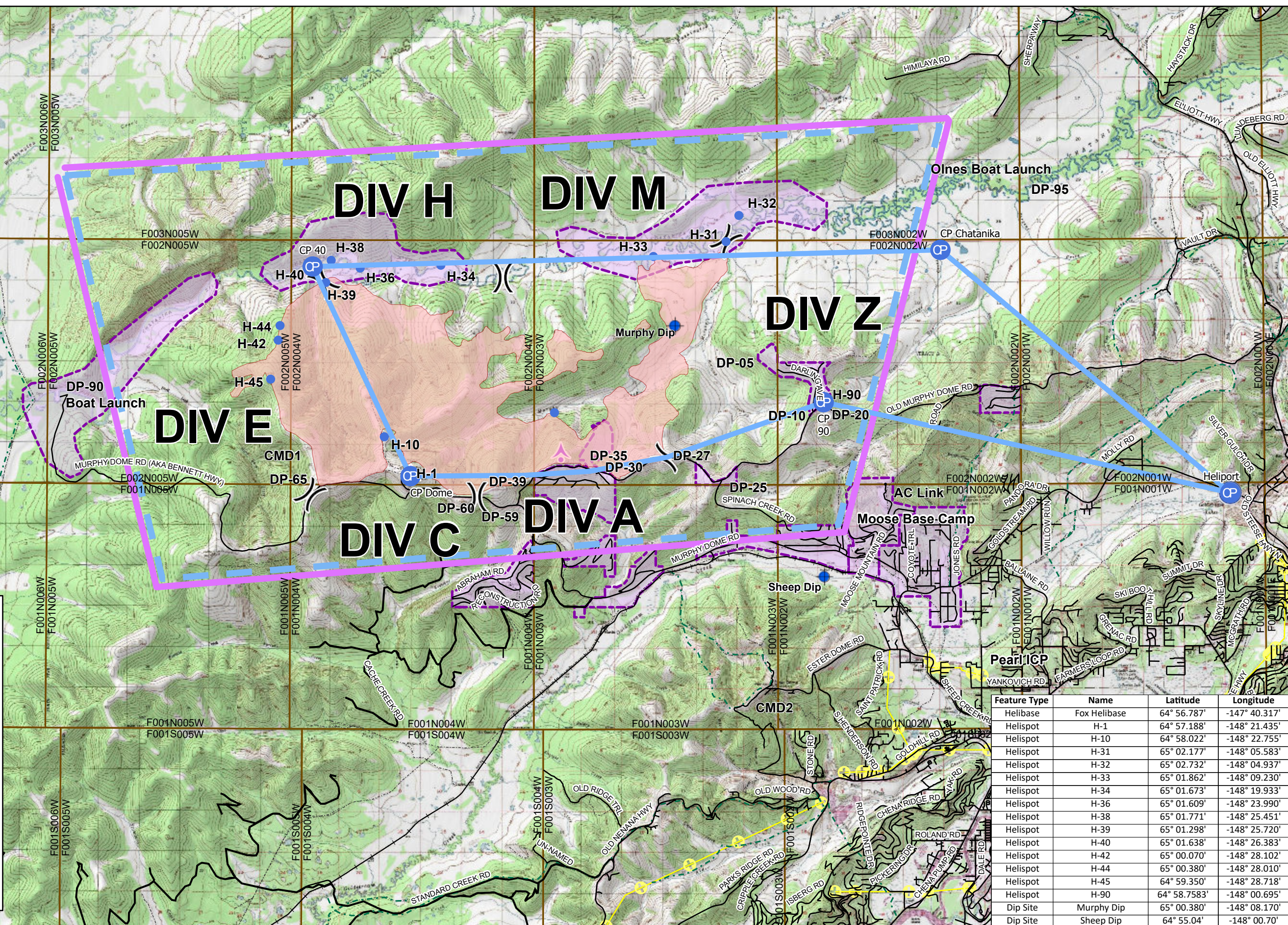


INCIDENT MANAGEMENT TEAM
 Team 6 - Type 2
 Alaska Albers Projection
 NAD 83 Datum

7/24/2019



- Aviation Check Points
- Flight Routes
- Aerial Hazard
- Helispot
- Dip Site
- Helibase
- Mobile Weather Unit
- Division Break
- TFR 98913
- Wildfire Daily Fire Perimeter
- Electrical Lines



Feature Type	Name	Latitude	Longitude
Helibase	Fox Helibase	64° 56.787'	-147° 40.317'
Helispot	H-1	64° 57.188'	-148° 21.435'
Helispot	H-10	64° 58.022'	-148° 22.755'
Helispot	H-31	65° 02.177'	-148° 05.583'
Helispot	H-32	65° 02.732'	-148° 04.937'
Helispot	H-33	65° 01.862'	-148° 09.230'
Helispot	H-34	65° 01.673'	-148° 19.933'
Helispot	H-36	65° 01.609'	-148° 23.990'
Helispot	H-38	65° 01.771'	-148° 25.451'
Helispot	H-39	65° 01.298'	-148° 25.720'
Helispot	H-40	65° 01.638'	-148° 26.383'
Helispot	H-42	65° 00.070'	-148° 28.102'
Helispot	H-44	65° 00.380'	-148° 28.010'
Helispot	H-45	64° 59.350'	-148° 28.718'
Helispot	H-90	64° 58.7583'	-148° 00.695'
Dip Site	Murphy Dip	65° 00.380'	-148° 08.170'
Dip Site	Sheep Dip	64° 55.04'	-148° 00.70'