

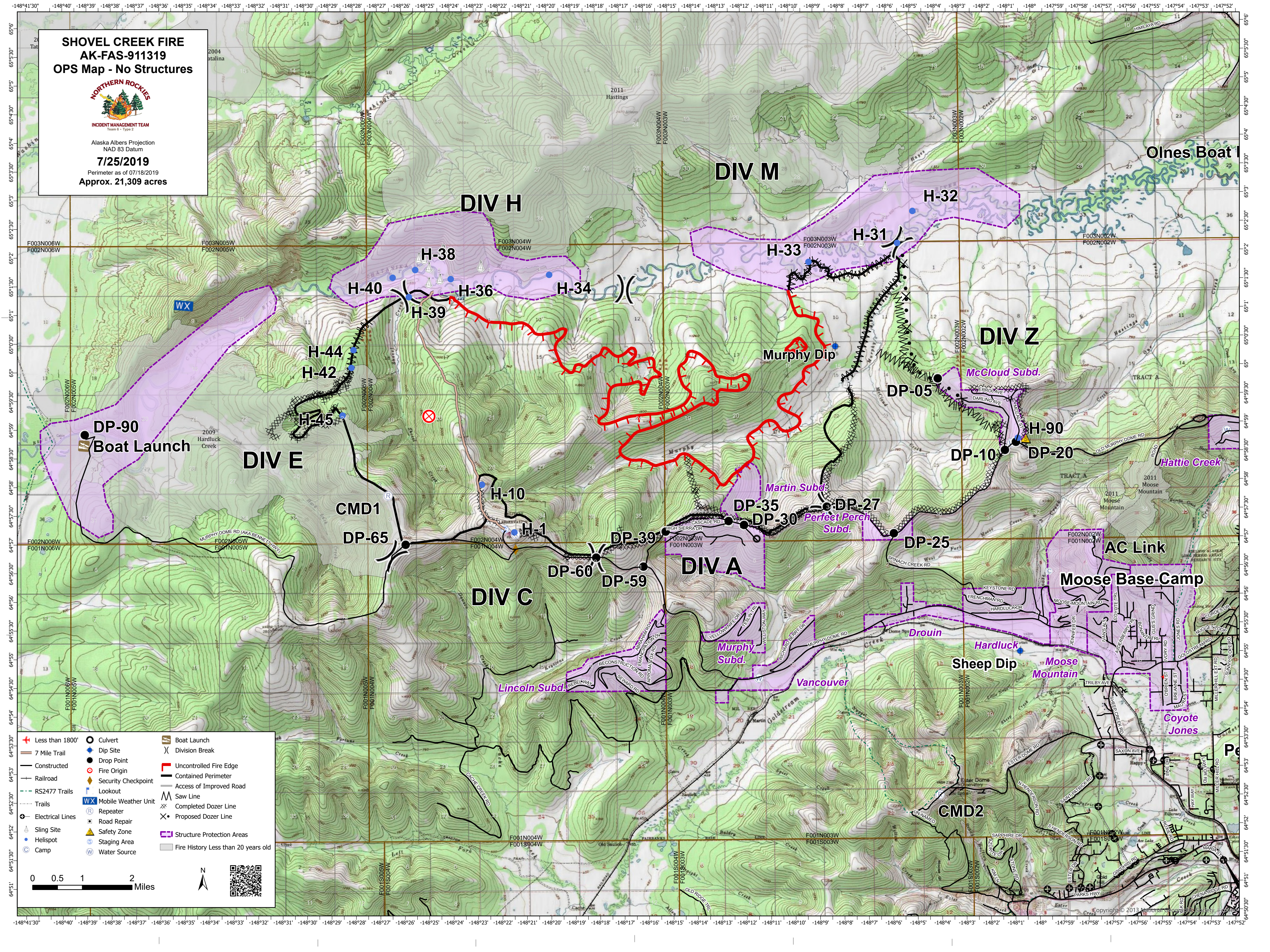
**SHOVEL CREEK FIRE
AK-FAS-911319
OPS Map - No Structures**



Alaska Albers Projection
NAD 83 Datum

7/25/2019

Perimeter as of 07/18/2019
Approx. 21,309 acres



- | | | |
|---------------------|---------------------|-------------------------------------|
| Less than 1800' | Culvert | Boat Launch |
| 7 Mile Trail | Dip Site | Division Break |
| Constructed | Fire Origin | Uncontrolled Fire Edge |
| Railroad | Drop Point | Contained Perimeter |
| RS2477 Trails | Security Checkpoint | Access of Improved Road |
| Trails | Lookout | Saw Line |
| Mobile Weather Unit | Repeater | Completed Dozer Line |
| Electrical Lines | Road Repair | Proposed Dozer Line |
| Sling Site | Safety Zone | Structure Protection Areas |
| Helispot | Staging Area | Fire History Less than 20 years old |
| Camp | Water Source | |

