


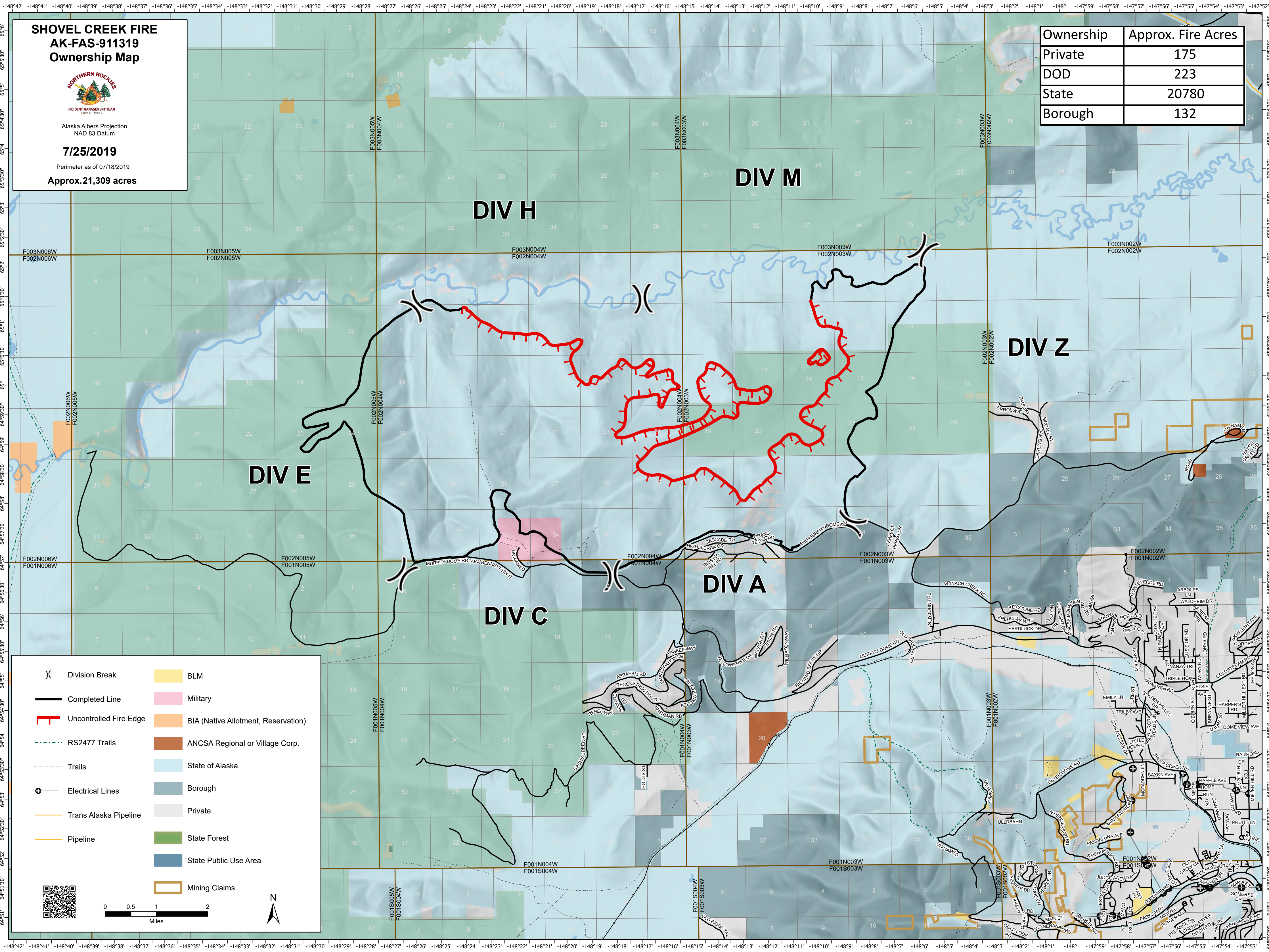
**SHOVEL CREEK FIRE  
AK-FAS-911319  
Ownership Map**



Alaska Albers Projection  
NAD 83 Datum

**7/25/2019**  
Perimeter as of 07/18/2019  
**Approx. 21,309 acres**

| Ownership | Approx. Fire Acres |
|-----------|--------------------|
| Private   | 175                |
| DOD       | 223                |
| State     | 20780              |
| Borough   | 132                |



|  |                        |  |                                     |
|--|------------------------|--|-------------------------------------|
|  | Division Break         |  | BLM                                 |
|  | Completed Line         |  | Military                            |
|  | Uncontrolled Fire Edge |  | BIA (Native Allotment, Reservation) |
|  | RS2477 Trails          |  | ANCSA Regional or Village Corp.     |
|  | Trails                 |  | State of Alaska                     |
|  | Electrical Lines       |  | Borough                             |
|  | Trans Alaska Pipeline  |  | Private                             |
|  | Pipeline               |  | State Forest                        |
|  |                        |  | State Public Use Area               |
|  |                        |  | Mining Claims                       |

0 0.5 1 2 Miles

