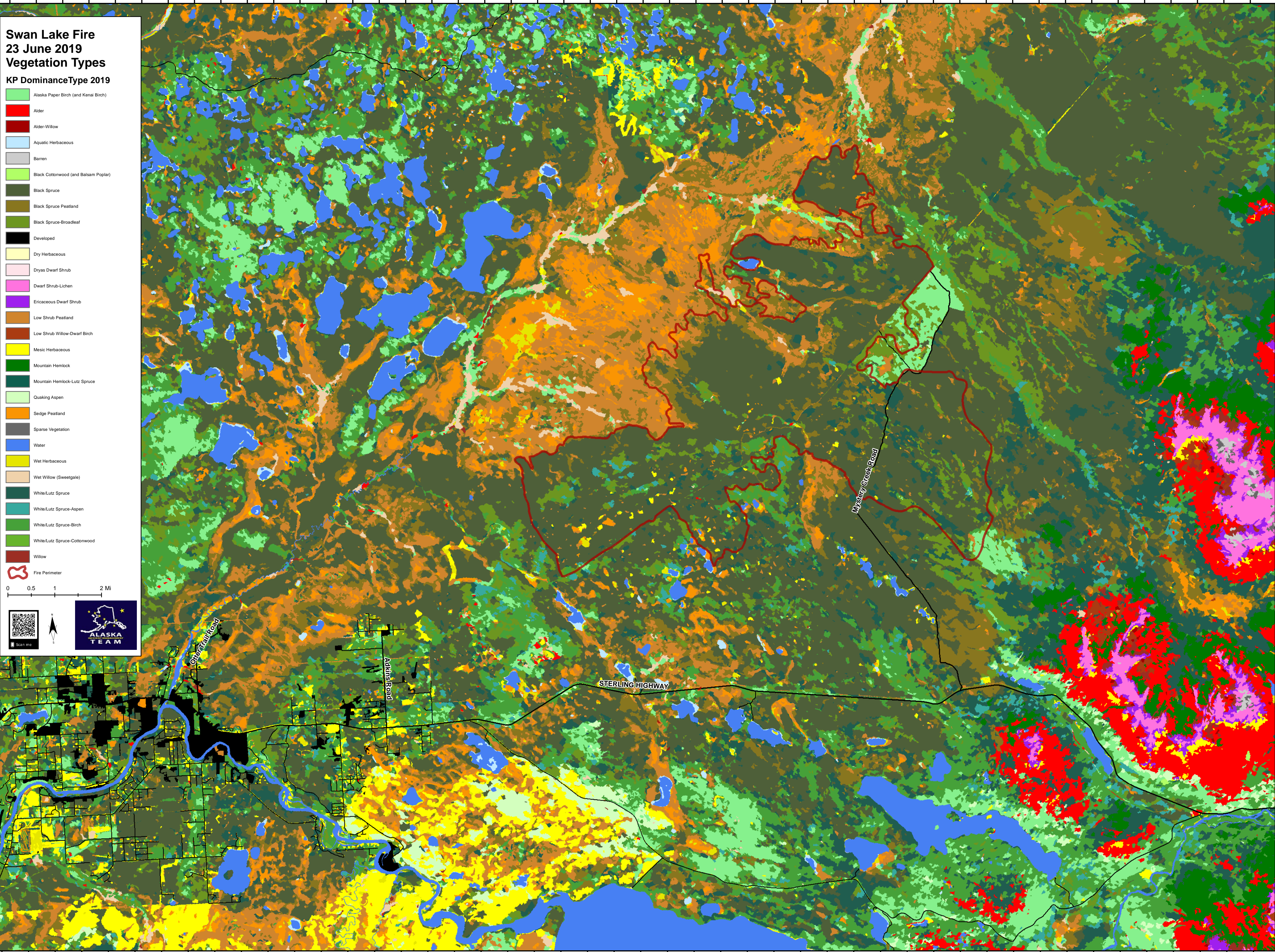


150°49'0"W 150°47'0"W 150°45'0"W 150°43'0"W 150°41'0"W 150°39'0"W 150°37'0"W 150°35'0"W 150°33'0"W 150°31'0"W 150°29'0"W 150°27'0"W 150°25'0"W 150°23'0"W 150°21'0"W 150°19'0"W 150°17'0"W 150°15'0"W 150°13'0"W 150°11'0"W 150°9'0"W 150°7'0"W 150°5'0"W 150°3'0"W

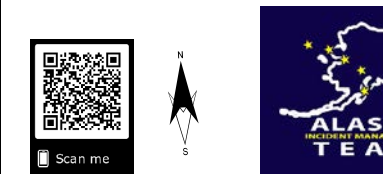


Swan Lake Fire 23 June 2019 Vegetation Types

KP DominanceType 2019

- Alaska Paper Birch (and Kenai Birch)
- Alder
- Alder-Willow
- Aquatic Herbaceous
- Barren
- Black Cottonwood (and Balsam Poplar)
- Black Spruce
- Black Spruce Peatland
- Black Spruce-Broadleaf
- Developed
- Dry Herbaceous
- Dryas Dwarf Shrub
- Dwarf Shrub-Lichen
- Ericaceous Dwarf Shrub
- Low Shrub Peatland
- Low Shrub Willow-Dwarf Birch
- Mesic Herbaceous
- Mountain Hemlock
- Mountain Hemlock-Lutz Spruce
- Quaking Aspen
- Sedge Peatland
- Sparse Vegetation
- Water
- Wet Herbaceous
- Wet Willow (Sweetgale)
- White/Lutz Spruce
- White/Lutz Spruce-Aspen
- White/Lutz Spruce-Birch
- White/Lutz Spruce-Cottonwood
- Willow
- Fire Perimeter

0 0.5 1 2 Mi



150°51'0"W 150°49'0"W 150°47'0"W 150°45'0"W 150°43'0"W 150°41'0"W 150°39'0"W 150°37'0"W 150°35'0"W 150°33'0"W 150°31'0"W 150°29'0"W 150°27'0"W 150°25'0"W 150°23'0"W 150°21'0"W 150°19'0"W 150°17'0"W 150°15'0"W 150°13'0"W 150°11'0"W 150°9'0"W 150°7'0"W 150°5'0"W