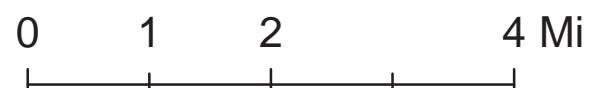


**Swan Lake Fire  
Air Operations  
AK-KKS-903181  
25 June 2019**

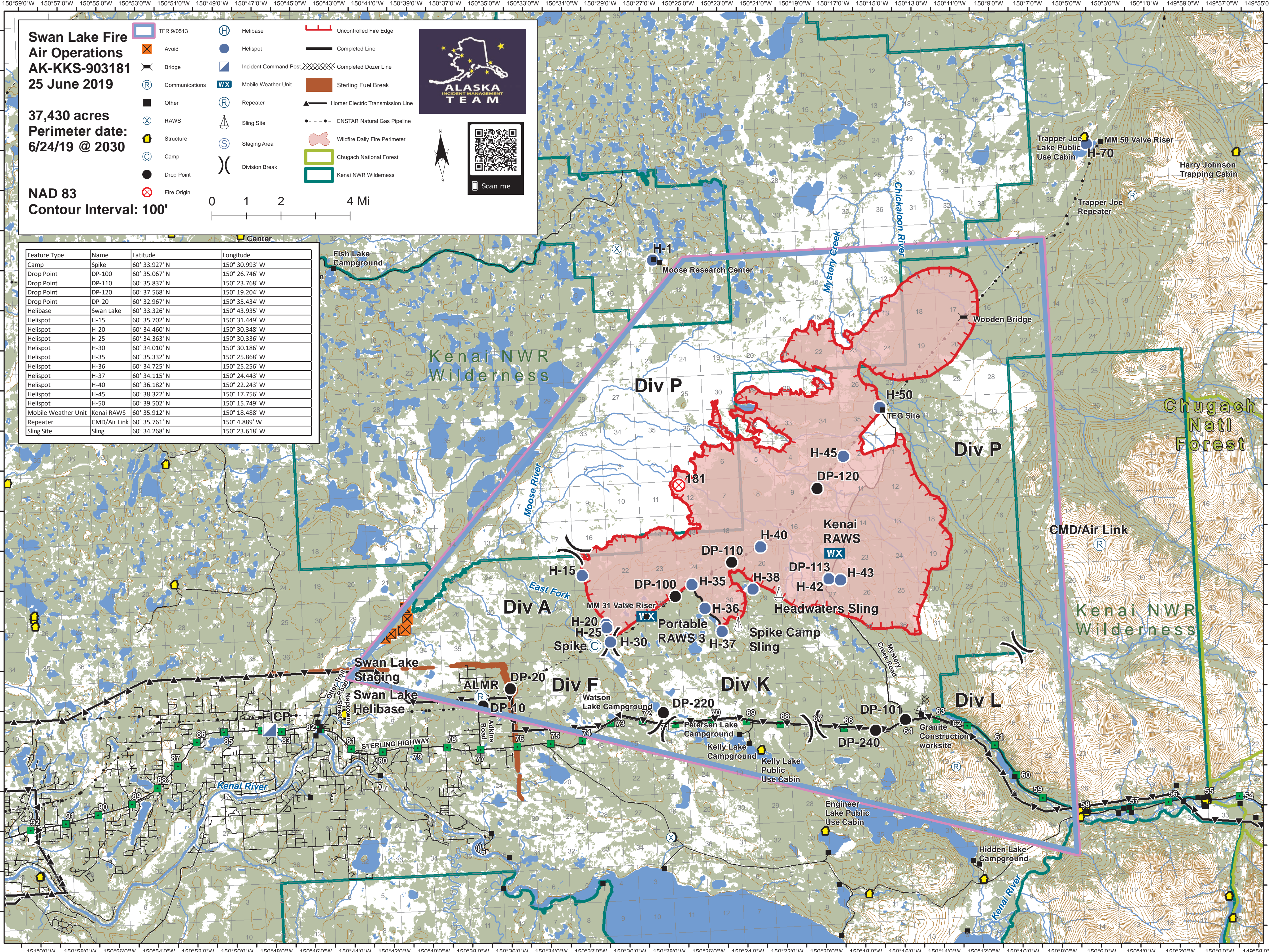
**37,430 acres  
Perimeter date:  
6/24/19 @ 2030**

**NAD 83  
Contour Interval: 100'**

- TFR 9/0513
- Avoid
- Bridge
- Communications
- Other
- RAWS
- Structure
- Camp
- Drop Point
- Fire Origin
- Helibase
- Helispot
- Incident Command Post
- Mobile Weather Unit
- Repeater
- Sling Site
- Division Break
- Uncontrolled Fire Edge
- Completed Line
- Completed Dozer Line
- Sterling Fuel Break
- Homer Electric Transmission Line
- ENSTAR Natural Gas Pipeline
- Wildfire Daily Fire Perimeter
- Chugach National Forest
- Kenai NWR Wilderness



Feature Type	Name	Latitude	Longitude
Camp	Spike	60° 33.927' N	150° 30.993' W
Drop Point	DP-100	60° 35.067' N	150° 26.746' W
Drop Point	DP-110	60° 35.837' N	150° 23.768' W
Drop Point	DP-120	60° 37.568' N	150° 19.204' W
Drop Point	DP-20	60° 32.967' N	150° 35.434' W
Helibase	Swan Lake	60° 33.326' N	150° 43.935' W
Helispot	H-15	60° 35.702' N	150° 31.449' W
Helispot	H-20	60° 34.460' N	150° 30.348' W
Helispot	H-25	60° 34.363' N	150° 30.336' W
Helispot	H-30	60° 34.010' N	150° 30.186' W
Helispot	H-35	60° 35.332' N	150° 25.868' W
Helispot	H-36	60° 34.725' N	150° 25.256' W
Helispot	H-37	60° 34.115' N	150° 24.443' W
Helispot	H-40	60° 36.182' N	150° 22.243' W
Helispot	H-45	60° 38.322' N	150° 17.756' W
Helispot	H-50	60° 39.502' N	150° 15.749' W
Mobile Weather Unit	Kenai RAWS	60° 35.912' N	150° 18.488' W
Repeater	CMD/Air Link	60° 35.761' N	150° 4.889' W
Sling Site	Sling	60° 34.268' N	150° 23.618' W



151°00'W 150°58'W 150°56'W 150°54'W 150°52'W 150°50'W 150°48'W 150°46'W 150°44'W 150°42'W 150°40'W 150°38'W 150°36'W 150°34'W 150°32'W 150°30'W 150°28'W 150°26'W 150°24'W 150°22'W 150°20'W 150°18'W 150°16'W 150°14'W 150°12'W 150°10'W 150°8'W 150°6'W 150°4'W 150°2'W 149°58'W