

**Swan Lake Fire
Air Operations
AK-KKS-903181
29 June 2019**



**62,840 acres
Perimeter date:
6/28/19 @ 1600**

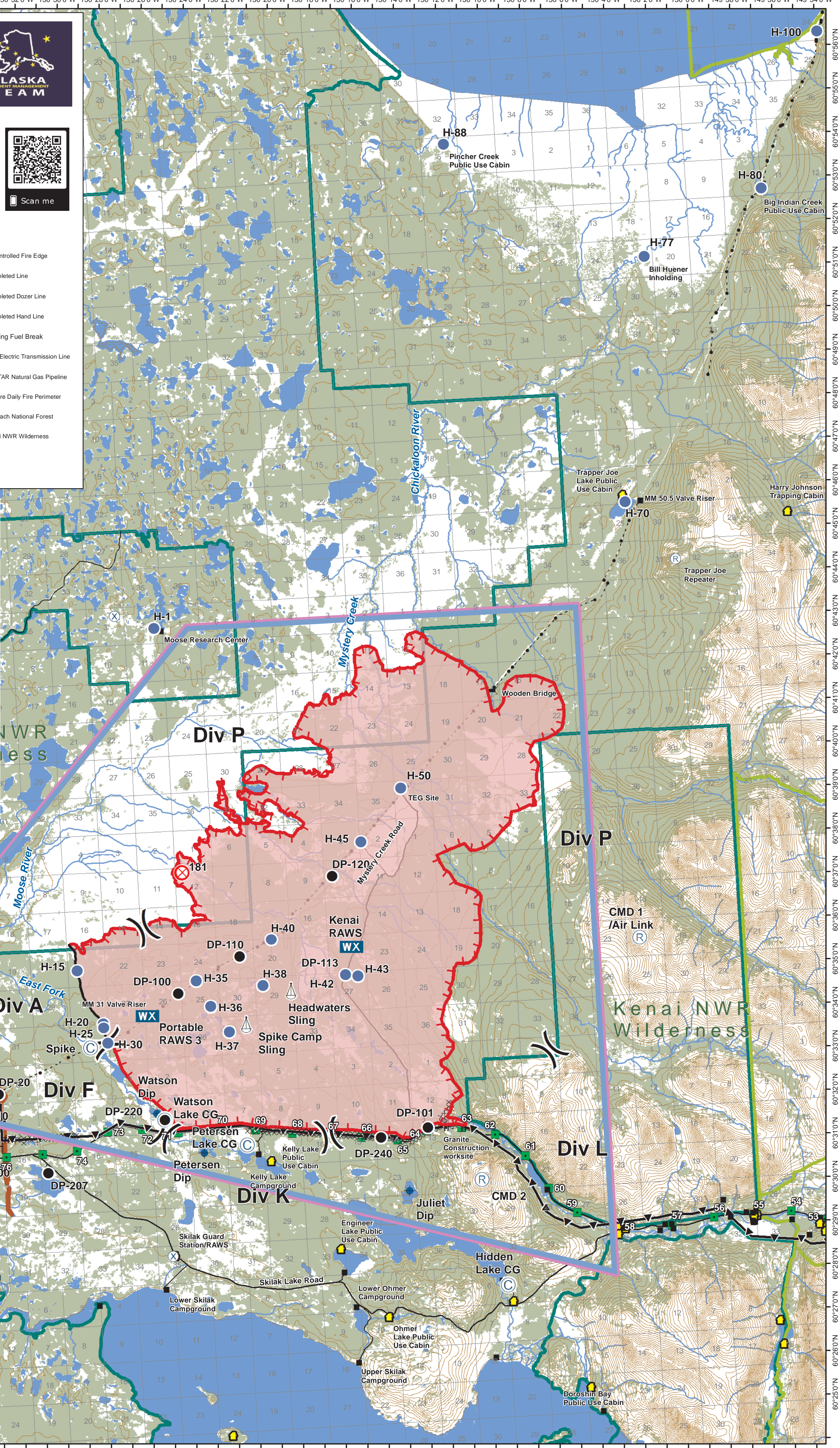
**NAD 83
Contour Interval: 100'**



	TFR 9/0513		Helibase		Uncontrolled Fire Edge
	Avoid		Helispot		Completed Line
	Bridge		Incident Command Post		Completed Dozer Line
	Other		Mobile Weather Unit		Completed Hand Line
	RAWS		Repeater		Sterling Fuel Break
	Structure		Sling Site		Homer Electric Transmission Line
	Camp		Staging Area		ENSTAR Natural Gas Pipeline
	Dip Site		Division Break		Wildfire Daily Fire Perimeter
	Drop Point		Chugach National Forest		Kenai NWR Wilderness
	Fire Origin				

0 1 2 4 Mi

Feature	Name	Latitude	Longitude	Type
Dip Site	Juliet Dip Site	60° 30.238' N	150° 16.377' W	
Dip Site	Peterson Dip	60° 31.363' N	150° 25.923' W	
Dip Site	Watson Dip Site	60° 32.328' N	150° 28.037' W	
Drop Point	DP-10	60° 32.573' N	150° 36.868' W	
Drop Point	DP-100	60° 35.067' N	150° 26.746' W	
Drop Point	DP-101	60° 31.673' N	150° 15.350' W	
Drop Point	DP-110	60° 35.837' N	150° 23.788' W	
Drop Point	DP-113	60° 35.287' N	150° 18.843' W	
Drop Point	DP-120	60° 37.568' N	150° 19.204' W	
Drop Point	DP-20	60° 32.967' N	150° 35.434' W	
Drop Point	DP-23	60° 33.596' N	150° 37.569' W	
Drop Point	DP-200	60° 31.466' N	150° 36.874' W	
Drop Point	DP-207	60° 31.093' N	150° 33.292' W	
Drop Point	DP-220	60° 32.176' N	150° 27.681' W	
Drop Point	DP-240	60° 31.502' N	150° 17.578' W	
Helibase	Swan Lake Helibase	60° 33.338' N	150° 23.935' W	
Helispot	H-1	60° 43.480' N	150° 26.985' W	
Helispot	H-15	60° 35.702' N	150° 31.449' W	
Helispot	H-20	60° 34.460' N	150° 30.348' W	
Helispot	H-25	60° 34.363' N	150° 30.336' W	
Helispot	H-30	60° 34.010' N	150° 30.186' W	
Helispot	H-35	60° 35.332' N	150° 25.868' W	
Helispot	H-36	60° 34.725' N	150° 25.256' W	
Helispot	H-37	60° 34.115' N	150° 24.443' W	
Helispot	H-38	60° 35.140' N	150° 22.750' W	
Helispot	H-40	60° 36.182' N	150° 22.243' W	
Helispot	H-42	60° 35.287' N	150° 18.843' W	Type 3 Only
Helispot	H-43	60° 35.242' N	150° 18.255' W	Type 3 Only
Helispot	H-45	60° 38.322' N	150° 17.756' W	
Helispot	H-50	60° 39.502' N	150° 15.749' W	
Helispot	H-70	60° 45.778' N	150° 4.373' W	
Helispot	H-77	60° 51.394' N	150° 2.779' W	
Helispot	H-80	60° 52.790' N	149° 57.034' W	
Helispot	H-88	60° 54.229' N	150° 12.003' W	
Helispot	H-100	60° 56.317' N	149° 53.933' W	
Mobile Weather Unit	Kenai RAWS	60° 35.912' N	150° 18.488' W	
Mobile Weather Unit	Portable RAWS 3	60° 34.589' N	150° 23.272' W	
Repeater	CMD1/Air Link	60° 35.761' N	150° 4.889' W	
Repeater	CMD2	60° 30.412' N	150° 12.951' W	
Sling Site	Headwaters Sling	60° 34.977' N	150° 21.440' W	
Sling Site	Spike Camp Sling	60° 34.268' N	150° 23.618' W	



Kenai NWR Wilderness

Div A

Div F

Div K

Div L

Div P

Swan Lake Staging

Swan Lake Helibase

ALMR

Adkins Road

Watson Dip

Petersen Dip

Juliet Dip

Hidden Lake CG

Ohmer Lake Public Use Cabin

Upper Skilak Campground

Lower Ohmer Campground

Lower Skilak Campground

Skilak Guard Station/RAWS

Skilak Lake Road

Engineer Lake Public Use Cabin

Kelly Lake Campground

Kelly Lake Public Use Cabin

Granite Construction worksite

DP-240

DP-101

DP-113

H-43

H-42

H-38

H-40

H-35

H-36

H-37

H-30

H-25

H-20

H-15

DP-100

DP-110

DP-120

DP-200

DP-207

DP-23

DP-20

DP-10

DP-110

DP-113

H-45

H-50

TEG Site

Mystery Creek Road

Headwaters Sling

Spike Camp Sling

Portable RAWS 3

Watson Lake CG

Petersen Lake CG

Kelly Lake Public Use Cabin

Kenai RAWs

Woods Bridge

Trapper Joe Lake Public Use Cabin

MM 50.5 Valve Riser

Trapper Joe Repeater

Harry Johnson Trapping Cabin

Big Indian Creek Public Use Cabin

Bill Huener Inholding

Pincher Creek Public Use Cabin

H-88

H-80

H-77

H-70

H-100