

**Swan Lake Fire
Air Operations
AK-KKS-903181
01 July 2019**

**70, 330 acres
Perimeter date:
7/01/19 @ 1600**

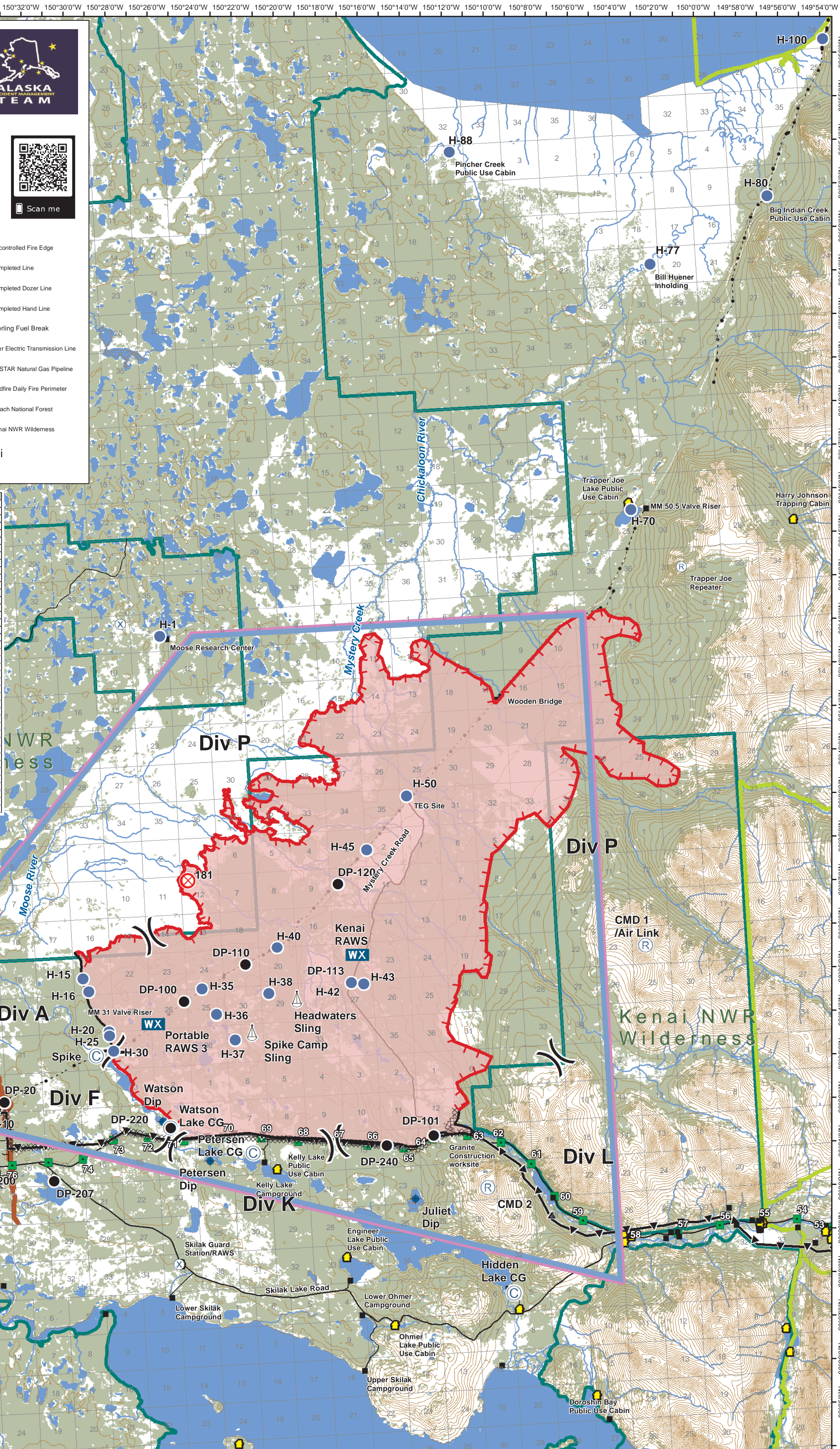
**NAD 83
Contour Interval: 100'**



- | | | | | | |
|--|-------------|--|-------------------------|--|----------------------------------|
| | TFR 9/0513 | | Helibase | | Uncontrolled Fire Edge |
| | Avoid | | Helispot | | Completed Line |
| | Bridge | | Incident Command Post | | Completed Dozer Line |
| | Other | | Mobile Weather Unit | | Completed Hand Line |
| | RAWS | | Repeater | | Sterling Fuel Break |
| | Structure | | Sling Site | | Homer Electric Transmission Line |
| | Camp | | Staging Area | | ENSTAR Natural Gas Pipeline |
| | Dip Site | | Division Break | | Wildfire Daily Fire Perimeter |
| | Drop Point | | Chugach National Forest | | Kenai NWR Wilderness |
| | Fire Origin | | | | |



| Feature | Name | Latitude | Longitude | Type |
|---------------------|--------------------|---------------|----------------|-------------|
| Dip Site | Juliet Dip Site | 60° 30.238' N | 150° 16.377' W | |
| Dip Site | Petersen Dip | 60° 31.363' N | 150° 25.923' W | |
| Dip Site | Watson Dip Site | 60° 32.328' N | 150° 28.037' W | |
| Drop Point | DP-10 | 60° 32.573' N | 150° 36.868' W | |
| Drop Point | DP-100 | 60° 35.067' N | 150° 28.746' W | |
| Drop Point | DP-101 | 60° 31.673' N | 150° 15.350' W | |
| Drop Point | DP-110 | 60° 35.837' N | 150° 23.768' W | |
| Drop Point | DP-113 | 60° 35.287' N | 150° 18.843' W | |
| Drop Point | DP-120 | 60° 37.568' N | 150° 19.204' W | |
| Drop Point | DP-20 | 60° 32.967' N | 150° 35.434' W | |
| Drop Point | DP-23 | 60° 33.596' N | 150° 37.559' W | |
| Drop Point | DP-200 | 60° 31.466' N | 150° 36.874' W | |
| Drop Point | DP-207 | 60° 31.093' N | 150° 33.292' W | |
| Drop Point | DP-220 | 60° 32.176' N | 150° 27.681' W | |
| Drop Point | DP-240 | 60° 31.502' N | 150° 17.578' W | |
| Helibase | Swan Lake Helibase | 60° 33.326' N | 150° 43.935' W | |
| Helispot | H-1 | 60° 43.480' N | 150° 26.985' W | |
| Helispot | H-15 | 60° 35.702' N | 150° 31.449' W | |
| Helispot | H-16 | 60° 35.400' N | 150° 31.200' W | |
| Helispot | H-20 | 60° 34.460' N | 150° 30.348' W | |
| Helispot | H-25 | 60° 34.363' N | 150° 30.336' W | |
| Helispot | H-30 | 60° 34.010' N | 150° 30.186' W | |
| Helispot | H-35 | 60° 35.332' N | 150° 25.868' W | |
| Helispot | H-36 | 60° 34.725' N | 150° 25.256' W | |
| Helispot | H-37 | 60° 34.115' N | 150° 24.443' W | |
| Helispot | H-38 | 60° 35.140' N | 150° 22.750' W | |
| Helispot | H-40 | 60° 36.182' N | 150° 22.243' W | |
| Helispot | H-42 | 60° 35.287' N | 150° 18.843' W | Type 3 Only |
| Helispot | H-43 | 60° 35.242' N | 150° 18.255' W | Type 3 Only |
| Helispot | H-45 | 60° 38.322' N | 150° 17.756' W | |
| Helispot | H-50 | 60° 39.502' N | 150° 15.749' W | |
| Helispot | H-70 | 60° 45.778' N | 150° 4.373' W | |
| Helispot | H-77 | 60° 51.394' N | 150° 2.779' W | |
| Helispot | H-80 | 60° 52.790' N | 149° 57.034' W | |
| Helispot | H-88 | 60° 54.229' N | 150° 12.003' W | |
| Helispot | H-100 | 60° 56.317' N | 149° 53.933' W | |
| Mobile Weather Unit | Kenai RAWS | 60° 35.912' N | 150° 18.488' W | |
| Mobile Weather Unit | Portable RAWS 3 | 60° 34.590' N | 150° 28.272' W | |
| Repeater | CMD1/Air Link | 60° 35.761' N | 150° 4.889' W | |
| Repeater | CMD2 | 60° 30.412' N | 150° 12.951' W | |
| Sling Site | Headwaters Sling | 60° 34.977' N | 150° 21.440' W | |
| Sling Site | Spike Camp Sling | 60° 34.268' N | 150° 23.618' W | |



60°58'0"N 60°57'0"N 60°56'0"N 60°55'0"N 60°54'0"N 60°53'0"N 60°52'0"N 60°51'0"N 60°50'0"N 60°49'0"N 60°48'0"N 60°47'0"N 60°46'0"N 60°45'0"N 60°44'0"N 60°43'0"N 60°42'0"N 60°41'0"N 60°40'0"N 60°39'0"N 60°38'0"N 60°37'0"N 60°36'0"N 60°35'0"N 60°34'0"N 60°33'0"N 60°32'0"N 60°31'0"N 60°30'0"N 60°29'0"N 60°28'0"N 60°27'0"N 60°26'0"N 60°25'0"N

150°42'0"W 150°40'0"W 150°38'0"W 150°36'0"W 150°34'0"W 150°32'0"W 150°30'0"W 150°28'0"W 150°26'0"W 150°24'0"W 150°22'0"W 150°20'0"W 150°18'0"W 150°16'0"W 150°14'0"W 150°12'0"W 150°10'0"W 150°8'0"W 150°6'0"W 150°4'0"W 150°2'0"W 150°0'0"W 149°58'0"W 149°56'0"W 149°54'0"W

60°58'0"E 60°57'0"E 60°56'0"E 60°55'0"E 60°54'0"E 60°53'0"E 60°52'0"E 60°51'0"E 60°50'0"E 60°49'0"E 60°48'0"E 60°47'0"E 60°46'0"E 60°45'0"E 60°44'0"E 60°43'0"E 60°42'0"E 60°41'0"E 60°40'0"E 60°39'0"E 60°38'0"E 60°37'0"E 60°36'0"E 60°35'0"E 60°34'0"E 60°33'0"E 60°32'0"E 60°31'0"E 60°30'0"E 60°29'0"E 60°28'0"E 60°27'0"E 60°26'0"E 60°25'0"E