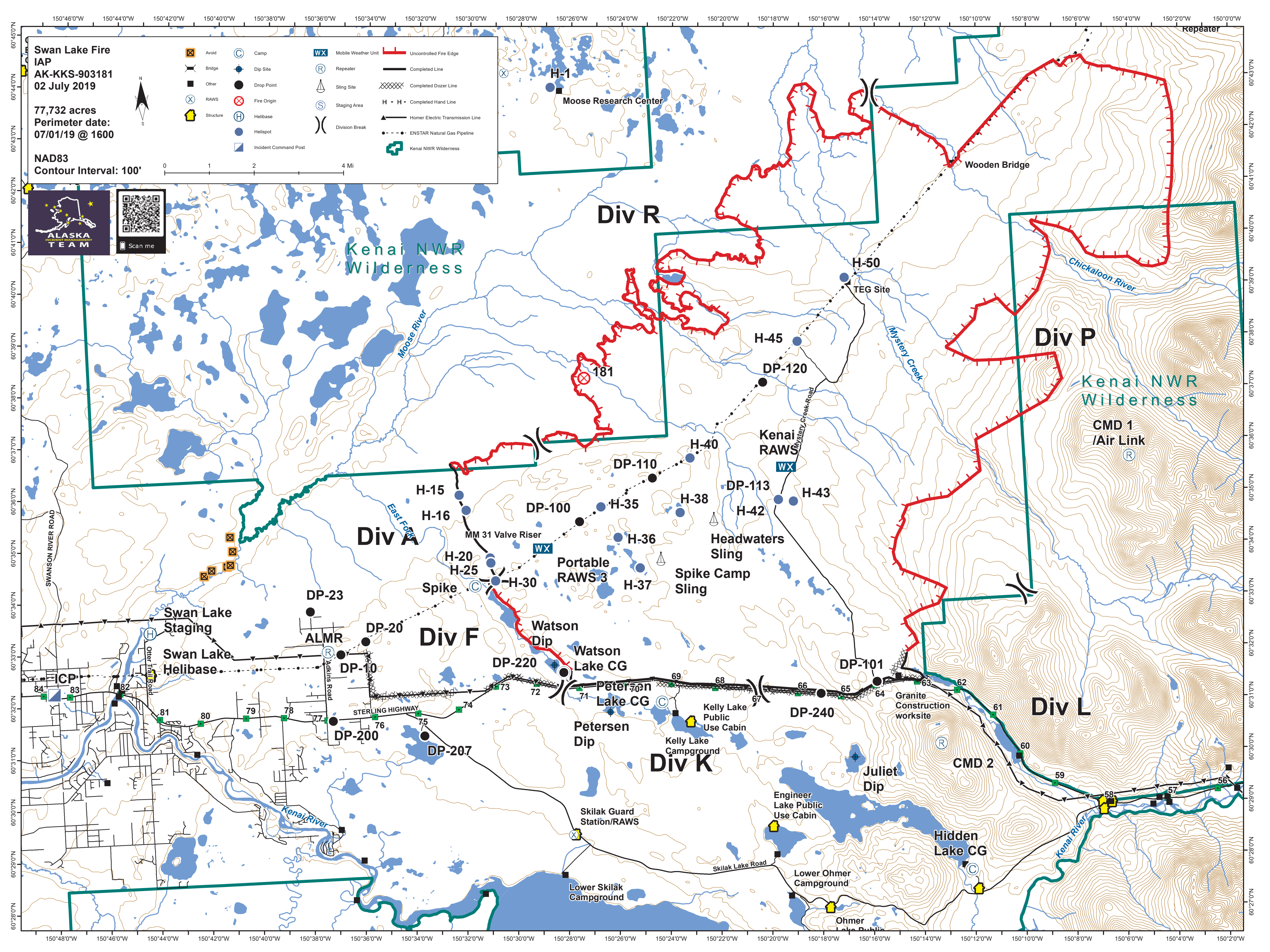
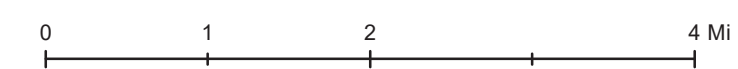


Swan Lake Fire
IAP
AK-KKS-903181
02 July 2019

77,732 acres
Perimeter date:
07/01/19 @ 1600

NAD83
Contour Interval: 100'

- | | | | |
|-----------|-----------------------|-----------------------------|----------------------------------|
| Avoid | Camp | Mobile Weather Unit | Uncontrolled Fire Edge |
| Bridge | Dip Site | Repeater | Completed Line |
| Other | Drop Point | Sling Site | Completed Dozer Line |
| RAWS | Fire Origin | Staging Area | Completed Hand Line |
| Structure | Helibase | Division Break | Homer Electric Transmission Line |
| | Helispot | ENSTAR Natural Gas Pipeline | Kenai NWR Wilderness |
| | Incident Command Post | | |



H-1
Moose Research Center

Wooden Bridge

Div R

Kenai NWR Wilderness

Div P

Kenai NWR Wilderness

CMD 1 /Air Link

Div A

Div F

Div K

Div L

Swan Lake Staging

Swan Lake Helibase

Watson Dip

Watson Lake CG

Petersen Lake CG

Petersen Dip

Skilak Guard Station/RAWS

Lower Skilak Campground

Headwaters Sling

Spike Camp Sling

Kelly Lake Public Use Cabin

Kelly Lake Campground

Granite Construction worksite

Juliet Dip

Engineer Lake Public Use Cabin

Lower Ohmer Campground

Ohmer Lake Public Use Cabin

Hidden Lake CG

CMD 2

Ohmer Lake Public Use Cabin

Ohmer Lake Public Use Cabin

CMD 1 /Air Link

Hidden Lake CG

CMD 2

Ohmer Lake Public Use Cabin

Ohmer Lake Public Use Cabin

Swan Lake Staging

Swan Lake Helibase

Watson Dip

Watson Lake CG

Petersen Lake CG

Petersen Dip

Skilak Guard Station/RAWS

Lower Skilak Campground

Headwaters Sling

Spike Camp Sling

Kelly Lake Public Use Cabin

Kelly Lake Campground

Granite Construction worksite

Juliet Dip

Engineer Lake Public Use Cabin

Lower Ohmer Campground

Ohmer Lake Public Use Cabin

Hidden Lake CG

CMD 2

Ohmer Lake Public Use Cabin

Ohmer Lake Public Use Cabin

CMD 1 /Air Link

Hidden Lake CG

CMD 2

Ohmer Lake Public Use Cabin

Ohmer Lake Public Use Cabin