

150°43'0"W 150°41'0"W 150°39'0"W 150°37'0"W 150°35'0"W 150°33'0"W 150°31'0"W 150°29'0"W 150°27'0"W 150°25'0"W 150°23'0"W 150°21'0"W 150°19'0"W 150°17'0"W 150°15'0"W 150°13'0"W 150°11'0"W 150°9'0"W 150°7'0"W 150°5'0"W 150°3'0"W 149°59'0"W 149°57'0"W 149°55'0"W 149°53'0"W 149°51'0"W

**Swan Lake Fire**  
**Air Operations**  
**AK-KKS-903181**  
**03 July 2019**

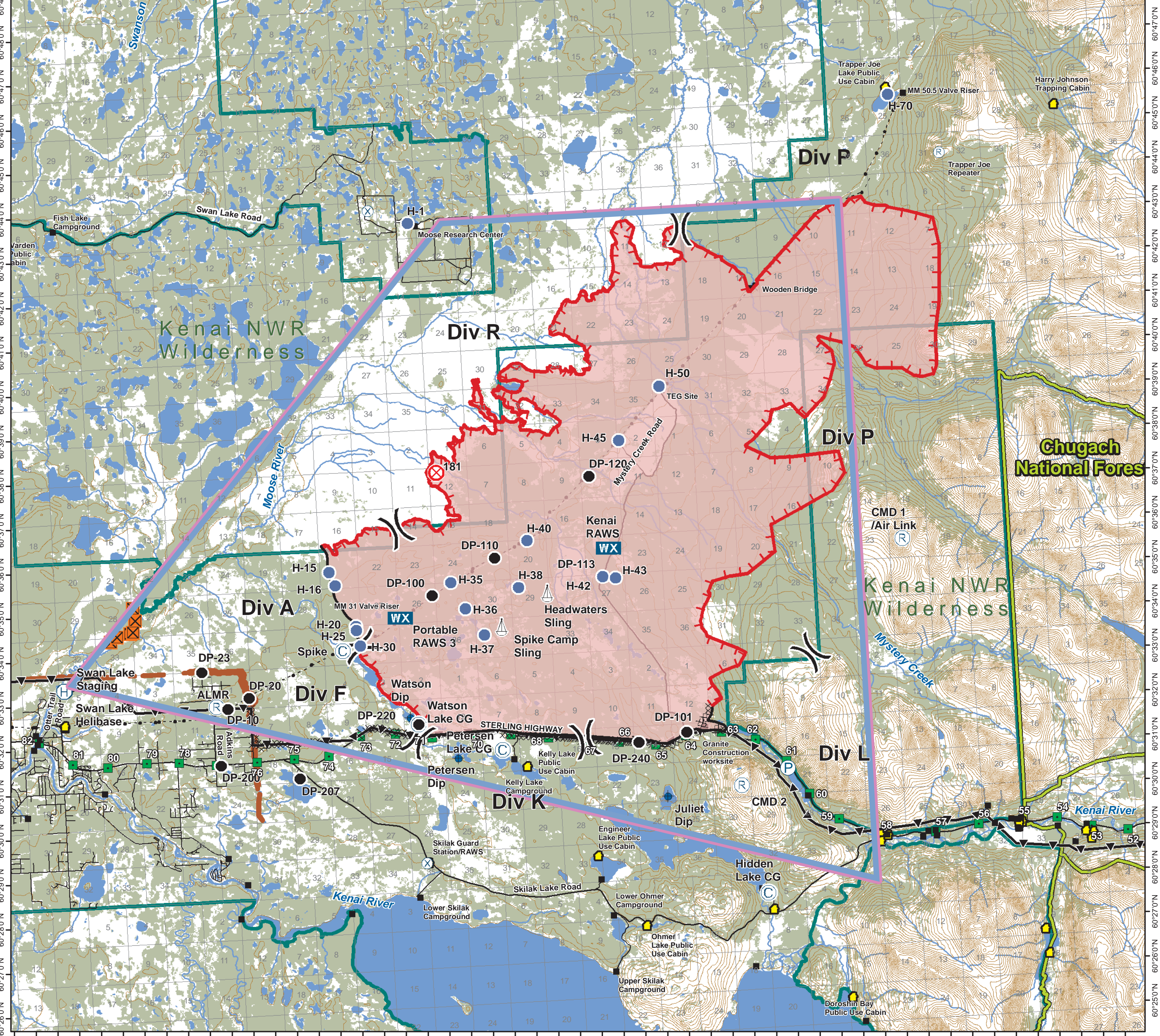
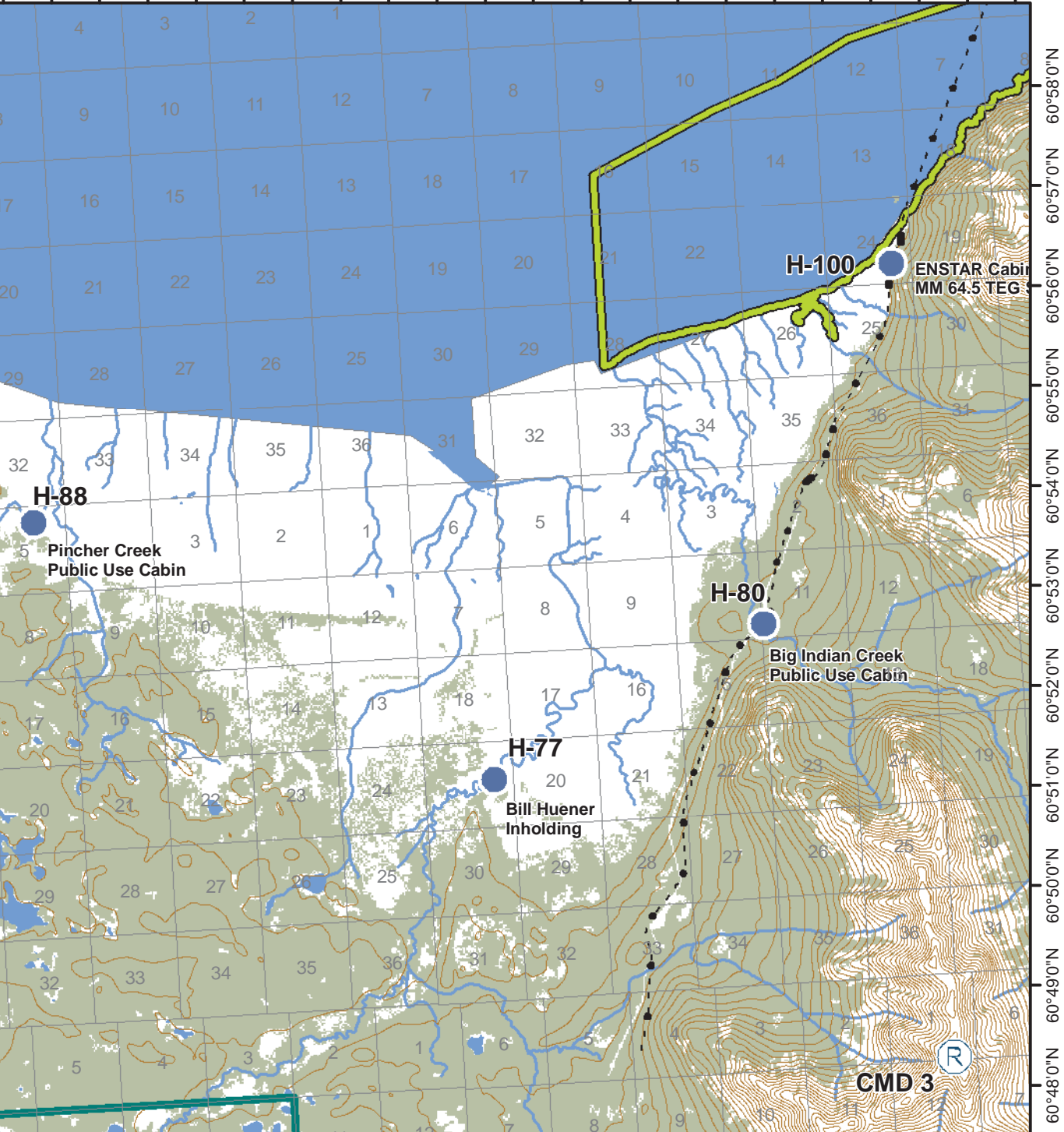


**77,732 acres**  
**Perimeter date:**  
**7/01/19 @ 2100**

**NAD 83**  
**Contour Interval: 100'**


0 1 2 4 Mi

Feature	Name	Latitude	Longitude	Type
Dip Site	Juliet Dip Site	60° 30.238' N	150° 16.377' W	
Dip Site	Peterson Dip	60° 31.363' N	150° 25.923' W	
Dip Site	Watson Dip Site	60° 32.328' N	150° 28.037' W	
Drop Point	DP-10	60° 32.741' N	150° 36.439' W	
Drop Point	DP-100	60° 35.067' N	150° 26.746' W	
Drop Point	DP-101	60° 31.673' N	150° 15.350' W	
Drop Point	DP-110	60° 35.837' N	150° 23.768' W	
Drop Point	DP-113	60° 35.287' N	150° 18.843' W	
Drop Point	DP-120	60° 37.568' N	150° 19.204' W	
Drop Point	DP-20	60° 32.967' N	150° 35.434' W	
Drop Point	DP-23	60° 33.596' N	150° 37.559' W	
Drop Point	DP-200	60° 31.466' N	150° 36.874' W	
Drop Point	DP-207	60° 31.093' N	150° 33.292' W	
Drop Point	DP-220	60° 32.176' N	150° 27.681' W	
Drop Point	DP-240	60° 31.502' N	150° 17.578' W	
Helibase	Swan Lake Helibase	60° 33.326' N	150° 43.935' W	
Helispot	H-1	60° 43.480' N	150° 26.985' W	
Helispot	H-15	60° 35.702' N	150° 31.449' W	
Helispot	H-16	60° 35.400' N	150° 31.200' W	
Helispot	H-20	60° 34.460' N	150° 30.348' W	
Helispot	H-25	60° 34.363' N	150° 30.336' W	
Helispot	H-30	60° 34.010' N	150° 30.186' W	
Helispot	H-35	60° 35.332' N	150° 25.868' W	
Helispot	H-36	60° 34.725' N	150° 25.256' W	
Helispot	H-37	60° 34.115' N	150° 24.443' W	
Helispot	H-38	60° 35.140' N	150° 22.750' W	
Helispot	H-40	60° 36.182' N	150° 22.243' W	
Helispot	H-42	60° 35.287' N	150° 18.843' W	Type 3 Only
Helispot	H-43	60° 35.242' N	150° 18.255' W	Type 3 Only
Helispot	H-45	60° 38.322' N	150° 17.756' W	
Helispot	H-50	60° 39.502' N	150° 15.749' W	
Helispot	H-70	60° 45.778' N	150° 4.373' W	
Helispot	H-77	60° 51.394' N	150° 2.779' W	
Helispot	H-80	60° 52.790' N	149° 57.034' W	
Helispot	H-88	60° 54.229' N	150° 12.003' W	
Helispot	H-100	60° 56.317' N	149° 53.933' W	
Mobile Weather Unit	Kenai RAWS	60° 35.912' N	150° 18.488' W	
Mobile Weather Unit	Portable RAWS 3	60° 34.590' N	150° 28.272' W	
Pump Site		60° 30.728' N	150° 10.792' W	
Repeater	CMD1/Air Link	60° 35.761' N	150° 4.889' W	
Repeater	CMD2	60° 30.412' N	150° 12.951' W	
Repeater	CMD3	60° 48.350' N	149° 53.610' W	
Sling Site	Headwaters Sling	60° 34.977' N	150° 21.440' W	
Sling Site	Spike Camp Sling	60° 34.268' N	150° 23.618' W	



150°46'0"W 150°44'0"W 150°42'0"W 150°40'0"W 150°38'0"W 150°36'0"W 150°34'0"W 150°32'0"W 150°30'0"W 150°28'0"W 150°26'0"W 150°24'0"W 150°22'0"W 150°20'0"W 150°18'0"W 150°16'0"W 150°14'0"W 150°12'0"W 150°10'0"W 150°8'0"W 150°6'0"W 150°4'0"W 150°2'0"W 150°0'0"W 149°58'0"W 149°56'0"W