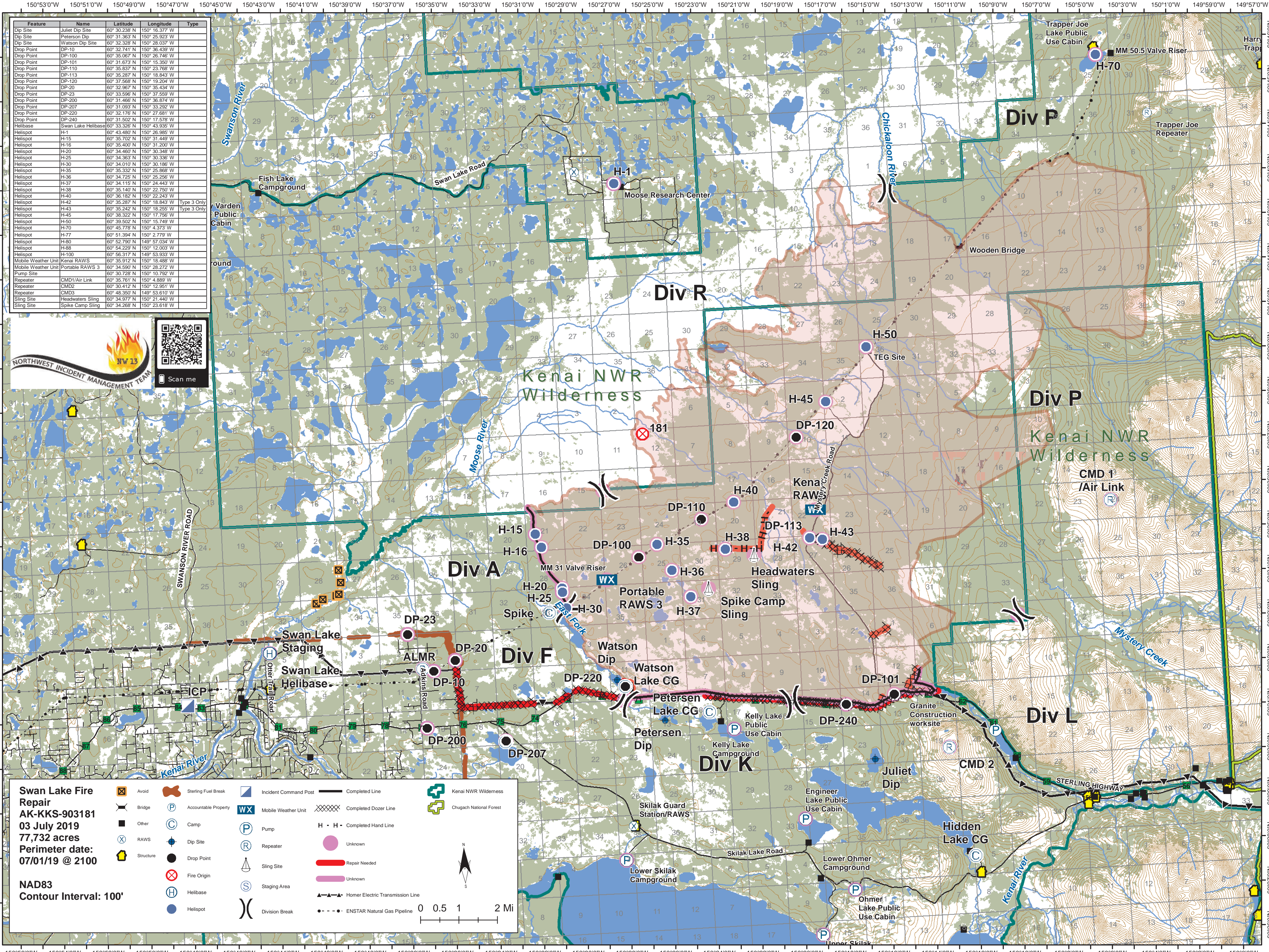


Feature	Name	Latitude	Longitude	Type
Dip Site	Juliet Dip Site	60° 30.238' N	150° 16.377' W	
Dip Site	Petersen Dip	60° 31.353' N	150° 26.223' W	
Dip Site	Watson Dip Site	60° 32.328' N	150° 28.037' W	
Drop Point	DP-10	60° 32.741' N	150° 36.439' W	
Drop Point	DP-100	60° 35.067' N	150° 26.746' W	
Drop Point	DP-101	60° 31.673' N	150° 15.350' W	
Drop Point	DP-110	60° 35.837' N	150° 23.768' W	
Drop Point	DP-113	60° 35.287' N	150° 18.843' W	
Drop Point	DP-120	60° 31.558' N	150° 12.204' W	
Drop Point	DP-20	60° 32.967' N	150° 36.234' W	
Drop Point	DP-23	60° 33.596' N	150° 37.559' W	
Drop Point	DP-200	60° 31.466' N	150° 36.874' W	
Drop Point	DP-207	60° 31.093' N	150° 33.292' W	
Drop Point	DP-220	60° 32.176' N	150° 27.681' W	
Drop Point	DP-240	60° 31.502' N	150° 17.578' W	
Helibase	Swan Lake Helibase	60° 33.326' N	150° 43.935' W	
Helispot	H-1	60° 43.489' N	150° 26.985' W	
Helispot	H-15	60° 35.702' N	150° 31.449' W	
Helispot	H-16	60° 35.400' N	150° 31.200' W	
Helispot	H-20	60° 34.460' N	150° 30.348' W	
Helispot	H-25	60° 34.363' N	150° 30.336' W	
Helispot	H-30	60° 34.010' N	150° 30.186' W	
Helispot	H-35	60° 35.332' N	150° 26.868' W	
Helispot	H-36	60° 34.725' N	150° 25.256' W	
Helispot	H-37	60° 34.115' N	150° 24.443' W	
Helispot	H-38	60° 35.140' N	150° 22.750' W	
Helispot	H-40	60° 36.182' N	150° 22.243' W	
Helispot	H-42	60° 35.287' N	150° 18.843' W	Type 3 Only
Helispot	H-43	60° 35.242' N	150° 18.255' W	Type 3 Only
Helispot	H-45	60° 38.322' N	150° 17.756' W	
Helispot	H-50	60° 39.502' N	150° 15.749' W	
Helispot	H-70	60° 45.778' N	150° 4.373' W	
Helispot	H-77	60° 51.394' N	150° 2.779' W	
Helispot	H-80	60° 52.780' N	149° 57.034' W	
Helispot	H-88	60° 54.229' N	150° 12.003' W	
Helispot	H-100	60° 56.317' N	149° 53.933' W	
Mobile Weather Unit	Kenai RAWS	60° 35.912' N	150° 18.488' W	
Mobile Weather Unit	Portable RAWS 3	60° 34.590' N	150° 28.272' W	
Pump Site		60° 30.728' N	150° 10.792' W	
Repeater	CMD1/Air Link	60° 35.761' N	150° 4.889' W	
Repeater	CMD2	60° 30.412' N	150° 12.851' W	
Repeater	CMD3	60° 48.350' N	149° 53.610' W	
Sling Site	Headwaters Sling	60° 34.977' N	150° 21.440' W	
Sling Site	Spike Camp Sling	60° 34.268' N	150° 23.618' W	



Swan Lake Fire Repair
AK-KKS-903181
03 July 2019
77,732 acres
Perimeter date:
07/01/19 @ 2100

NAD83
Contour Interval: 100'

Avoid	Sterling Fuel Break	Incident Command Post	Completed Line	Kenai NWR Wilderness
Bridge	Accountable Property	Mobile Weather Unit	Completed Dozer Line	Chugach National Forest
Other	Camp	Pump	H - H - Completed Hand Line	
RAWS	Dip Site	Repeater	Repair Needed	
Structure	Drop Point	Sling Site	Unknown	
Fire Origin	Helibase	Staging Area	Homer Electric Transmission Line	
Helispot	Division Break	ENSTAR Natural Gas Pipeline		

