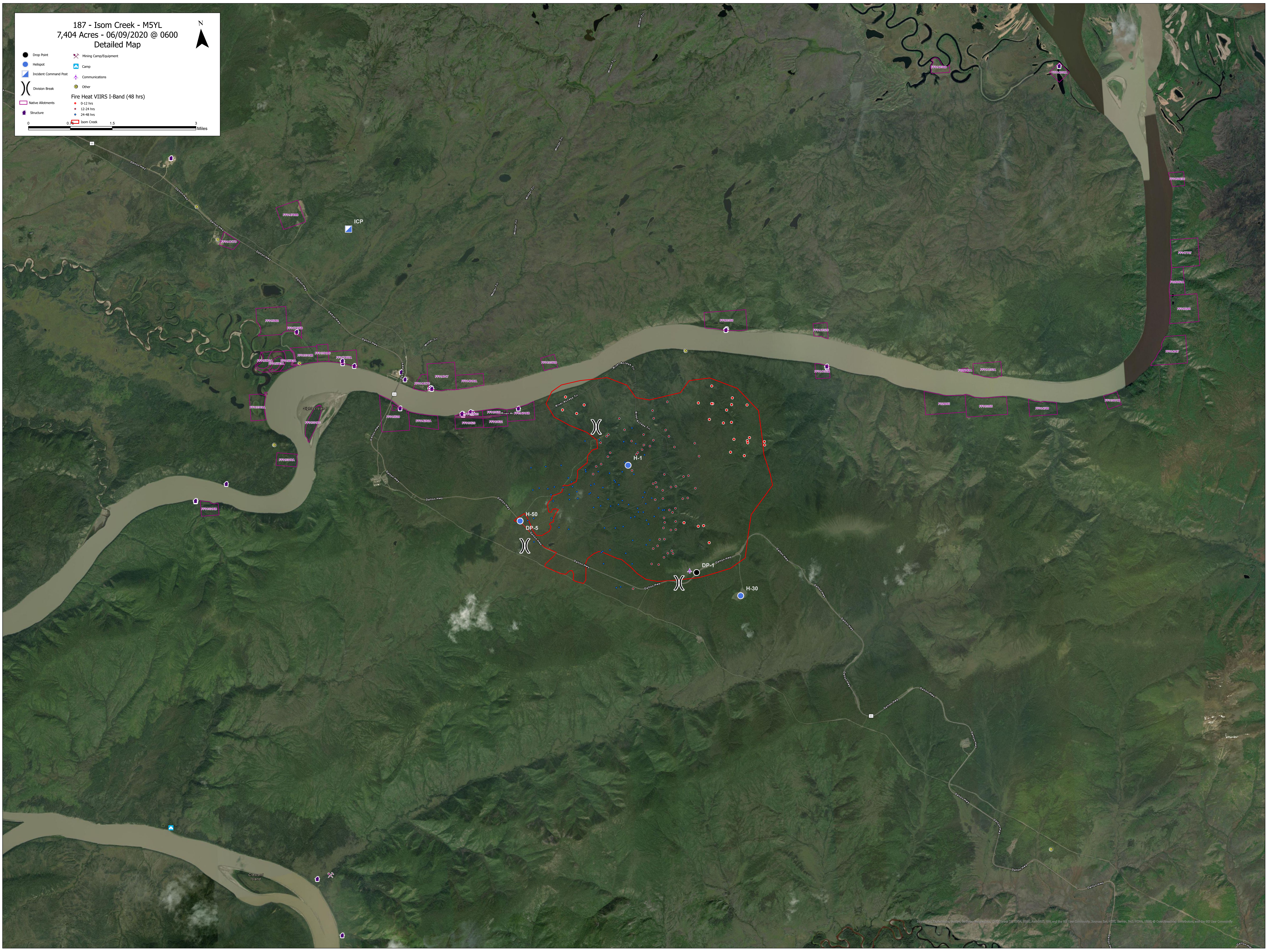
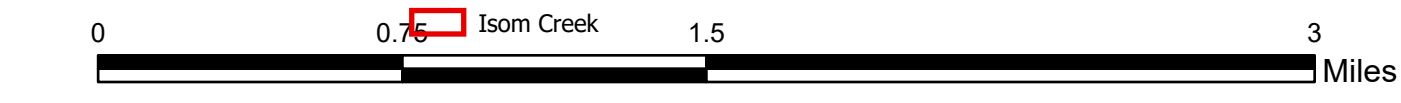


187 - Isom Creek - M5YL
 7,404 Acres - 06/09/2020 @ 0600
 Detailed Map



- Drop Point
- Helispot
- ⬢ Incident Command Post
- ⎓ Division Break
- Native Allotments
- Structure
- ✂ Mining Camp/Equipment
- ⚙ Camp
- ✈ Communications
- ⊙ Other
- Fire Heat VIIRS I-Band (48 hrs)**
- 0-12 hrs
- 12-24 hrs
- 24-48 hrs



Source: ESRI, DeLorme, GeoEye, (GeoEye), IGN, Aeris, Earthstar, AeroGRID, IGN, and the GIS User Community, Source: Esri, DigitalGlobe, GeoEye, IGN, AeroGRID, IGN, and the GIS User Community, Source: Esri, DigitalGlobe, GeoEye, IGN, AeroGRID, IGN, and the GIS User Community