

Pilot Map

Isom Creek
AK UYD 000187
June 14, 2020

12024 acres at 1100 June 13, 2020



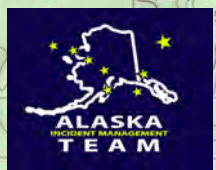
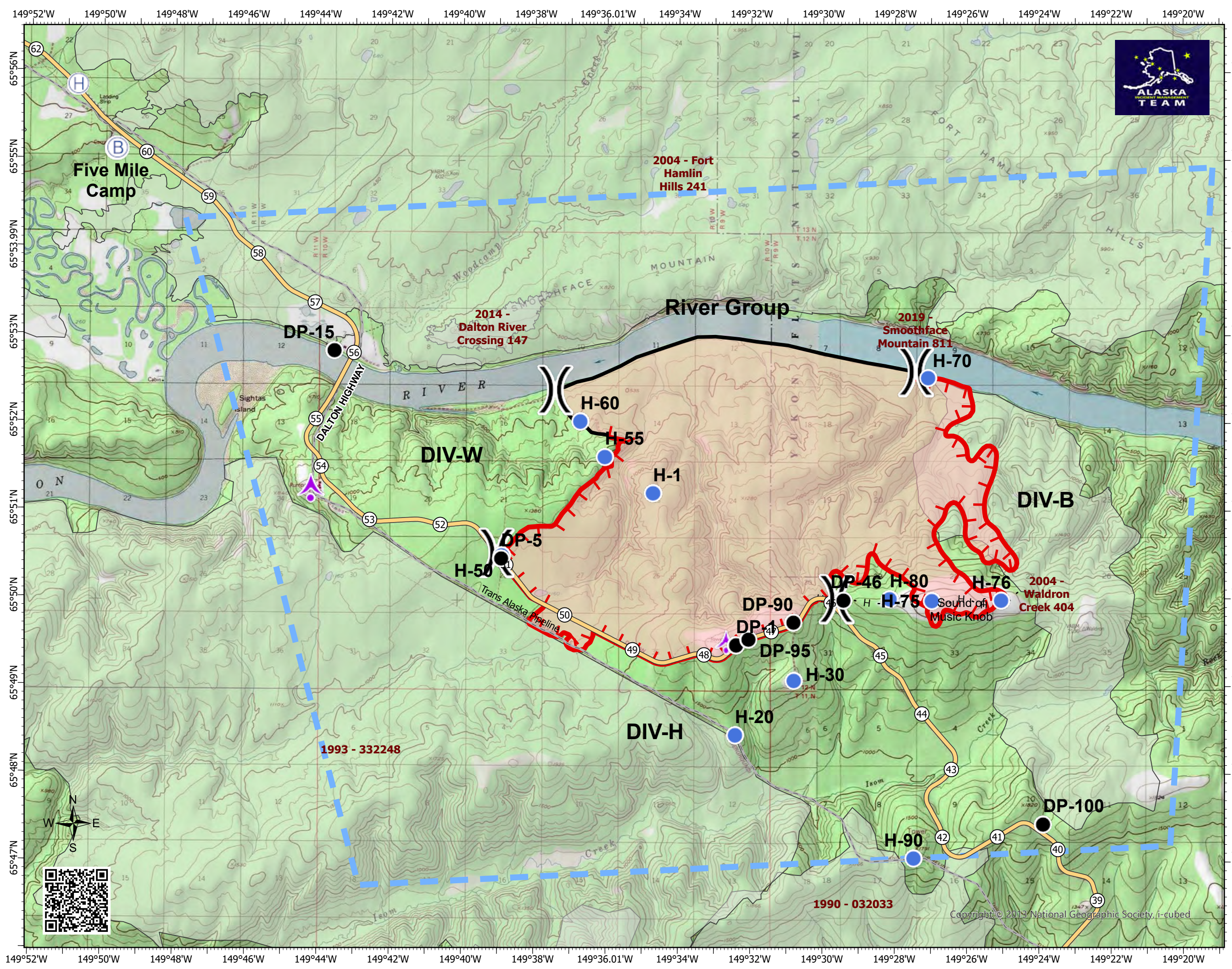
- Aerial Hazard
- Drop Point
- Helibase
- Helispot
- Incident Base
- Division Break
- Milepost
- Road Centerlines
- Trans Alaska Pipeline System
- Uncontrolled Fire Edge
- Contained Line
- Completed Hand Line
- Wildfire TFRs
- Wildfire Daily Fire Perimeter
- Fire History - Perimeters

Label	Type	Latitude	Longitude
	Aerial Hazard	65 49.500	149 32.652
	Aerial Hazard	65 51.242	149 44.204
DP-1	Drop Point	65 49.465	149. 32.398
DP-100	Drop Point	65 47.430	149 23.883
DP-15	Drop Point	65 52.812	149 43.573
DP-46	Drop Point	65 49.979	149 29.425
DP-5	Drop Point	65 50.445	149 38.916
DP-90	Drop Point	65 49.724	149 30.812
DP-95	Drop Point	65 49.530	149 32.055
Helibase	Helibase	65 55.836	149 50.733
H-1	Helispot	65 51.198	149 34.708
H-20	Helispot	65 48.440	149 32.421
H-30	Helispot	65 49.060	149 30.798
H-50	Helispot	65 50.445	149 38.916
H-55	Helispot	65 51.610	149 36.049
H-60	Helispot	65 52.012	149 36.727
H-70	Helispot	65 52.518	149 27.083
H-75	Helispot	65 49.959	149 26.786
H-76	Helispot	65 49.979	149 25.049
H-80	Helispot	65 49.946	149 30.812
H-90	Helispot	65 47.040	149 27.471
Five Mile Camp	Incident Base	65 55.145	149 44.673

Erin Novakovich
6/13/2020 2049



North American 1983 Datum. LatLong Grid



Copyright © 2013 National Geographic Society, i-cubed