

147°54'W 147°52'W 147°50'W 147°48'W 147°46'W 147°44'W 147°42'W 147°40'W 147°38'W 147°36.01'W 147°34'W 147°32'W 147°30'W 147°28'W 147°26'W 147°24'W 147°22'W 147°20'W

65°17'N  
65°16'N  
65°15'N  
65°14'N  
65°13'N  
65°12'N  
65°11'N  
65°10'N  
65°9.99'N  
65°8.99'N  
65°7.5'N  
65°6.5'N  
65°5.5'N  
65°4.5'N  
65°3.5'N  
65°2.5'N  
65°1.49'N  
65°0.5'N  
64°59.5'N

65°17'N  
65°16'N  
65°15'N  
65°14'N  
65°13'N  
65°12'N  
65°11'N  
65°10'N  
65°9.99'N  
65°8.99'N  
65°7.5'N  
65°6.5'N  
65°5.5'N  
65°4.5'N  
65°3.5'N  
65°2.5'N  
65°1.49'N  
65°0.5'N  
64°59.5'N

# Pilot Map

Haystack  
AK-FAS-111196  
6/24/21

924 acres at 13:30 June 21, 2021

0 0.5 1 2 3 4 Miles

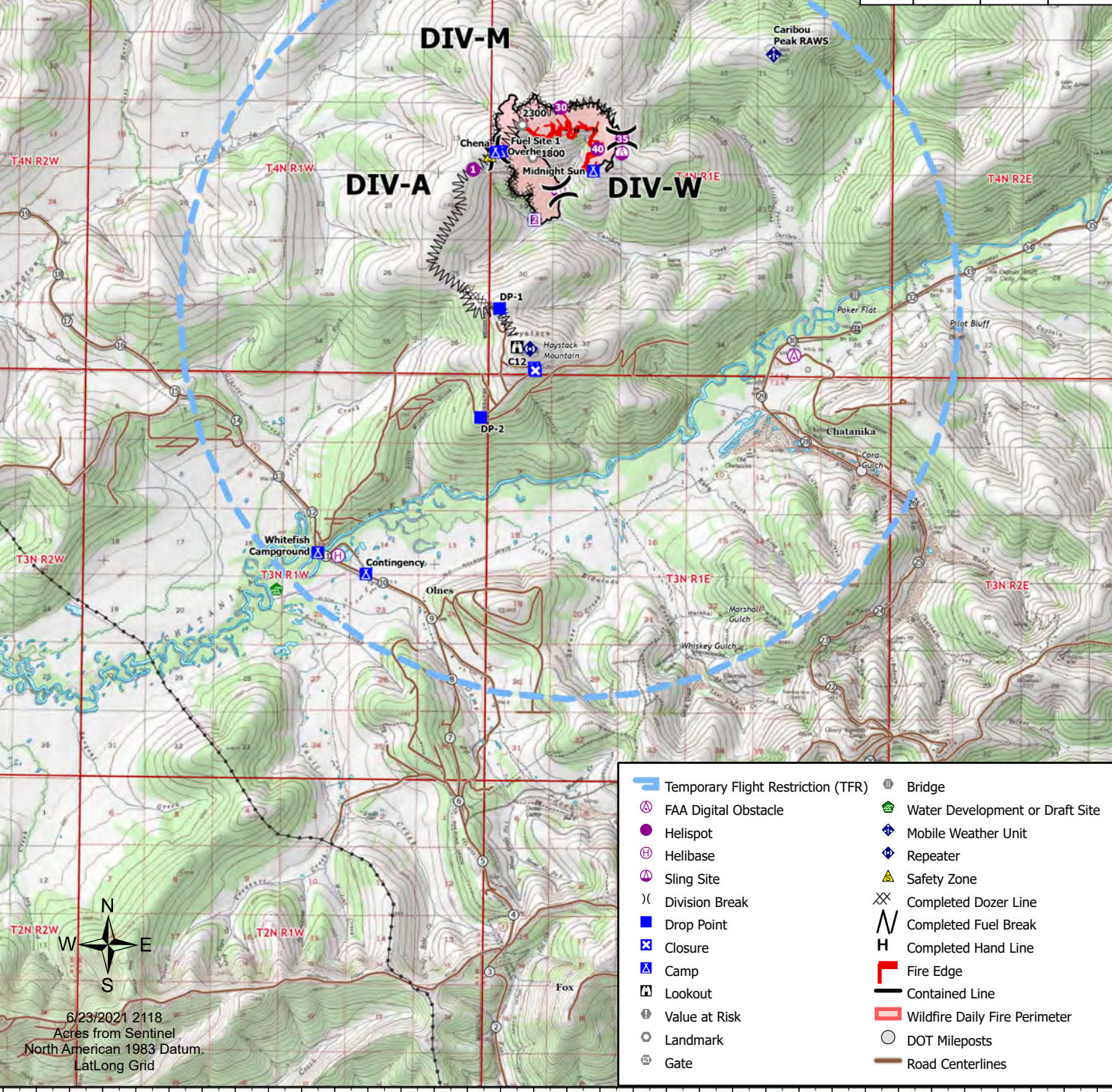


| Type       | Label          | Lat (WGS84)   | Long (WGS84)   |
|------------|----------------|---------------|----------------|
| Helibase   |                | 65° 05.051' N | 147° 43.083' W |
| Sling Site | Midnight Sun's | 65° 10.263' N | 147° 38.305' W |
| Helispot   | H-1            | 65° 10.006' N | 147° 39.112' W |
| Helispot   | H-2            | 65° 09.373' N | 147° 37.234' W |
| Sling Site | Fuel Site 1    | 65° 10.233' N | 147° 38.209' W |
| Camp       | Midnight Sun's | 65° 10.001' N | 147° 35.461' W |
| Sling Site | Sling Site 2   | 65° 09.748' N | 147° 36.515' W |
| Camp       | Contingency    | 65° 04.820' N | 147° 42.234' W |
| Camp       | Overhead       | 65° 10.238' N | 147° 38.270' W |
| Helispot   | 30             | 65° 10.807' N | 147° 36.465' W |
| Helispot   | 35             | 65° 10.413' N | 147° 34.590' W |
| Sling Site |                | 65° 10.232' N | 147° 34.602' W |
| Drop Point | DP-2           | 65° 06.843' N | 147° 38.807' W |
| Helispot   | H-40           | 65° 10.281' N | 147° 35.333' W |
| Camp       | Chena          | 65° 10.227' N | 147° 38.439' W |

**DIV-M**

**DIV-A**

**DIV-W**



- Temporary Flight Restriction (TFR)
- FAA Digital Obstacle
- Helispot
- Helibase
- Sling Site
- Division Break
- Drop Point
- Closure
- Camp
- Lookout
- Value at Risk
- Landmark
- Gate
- Bridge
- Water Development or Draft Site
- Mobile Weather Unit
- Repeater
- Safety Zone
- Completed Dozer Line
- Completed Fuel Break
- Completed Hand Line
- Fire Edge
- Contained Line
- Wildfire Daily Fire Perimeter
- DOT Mileposts
- Road Centerlines



6/23/2021 2118  
Acres from Sentinel  
North American 1983 Datum.  
LatLong Grid

147°53'W 147°51.01'W 147°49'W 147°47'W 147°45'W 147°43'W 147°41'W 147°39'W 147°37'W 147°35'W 147°33'W 147°31'W 147°29'W 147°27'W 147°25'W 147°23'W 147°21.01'W