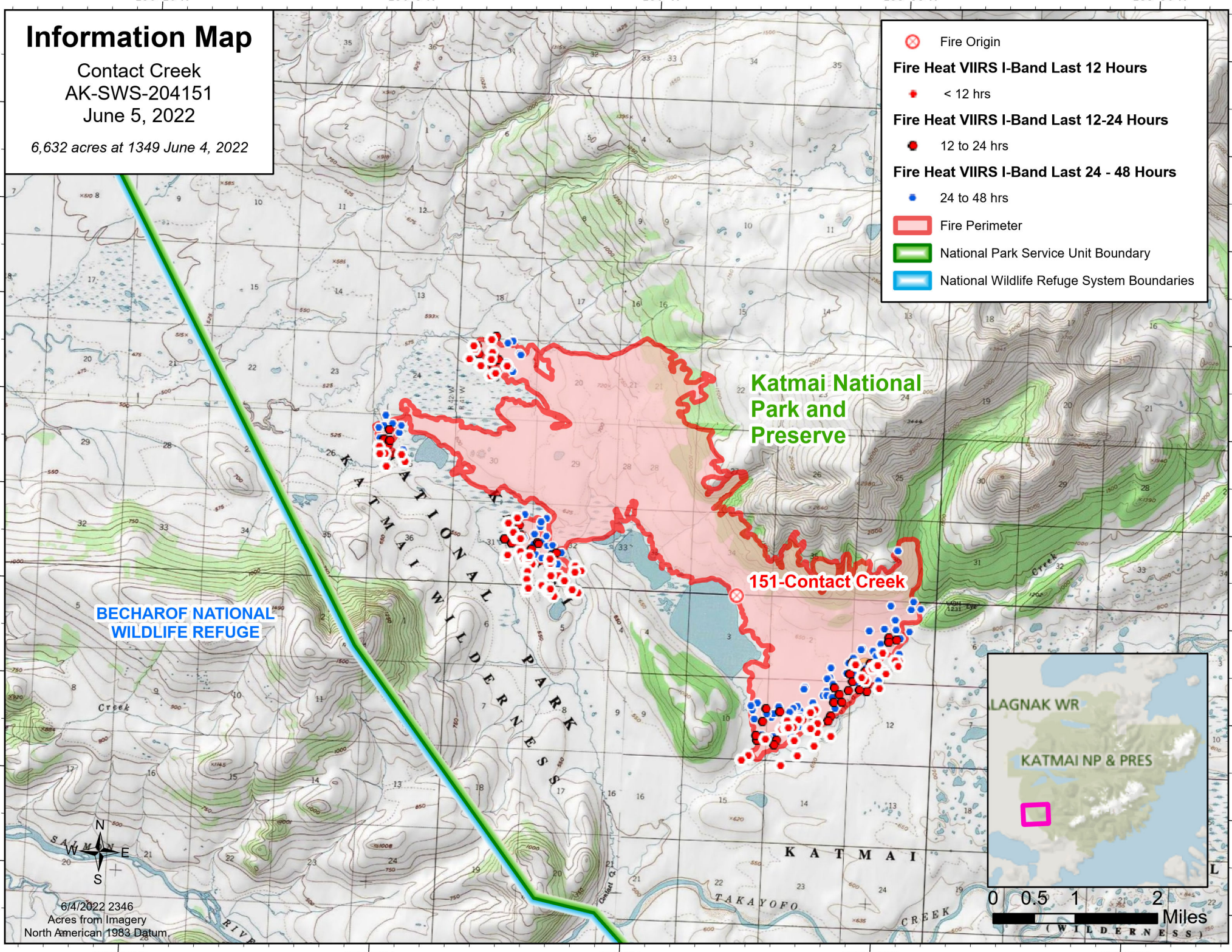


# Information Map

Contact Creek  
AK-SWS-204151  
June 5, 2022

6,632 acres at 1349 June 4, 2022

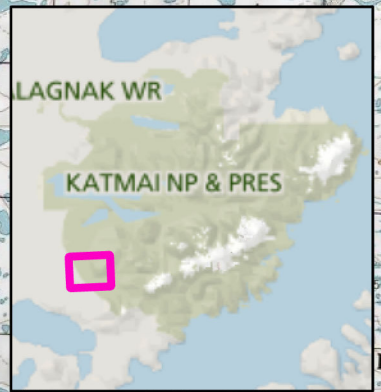
- Fire Origin
- Fire Heat VIIRS I-Band Last 12 Hours**
  - < 12 hrs
  - 12 to 24 hrs
- Fire Heat VIIRS I-Band Last 12-24 Hours**
  - 24 to 48 hrs
- Fire Perimeter
- National Park Service Unit Boundary
- National Wildlife Refuge System Boundaries



**Katmai National Park and Preserve**

**151-Contact Creek**

**BECHAROF NATIONAL WILDLIFE REFUGE**



6/4/2022 2346  
Acres from Imagery  
North American 1983 Datum

156°10'W 156°5'W 156°W 155°55'W 155°50'W

58°18'N 58°17'N 58°16'N 58°15'N 58°14'N 58°13'N 58°12'N 58°11'N 58°10'N

SAWMA RIVER

KATMAI WILDERNESS

TAKAYOFO CREEK