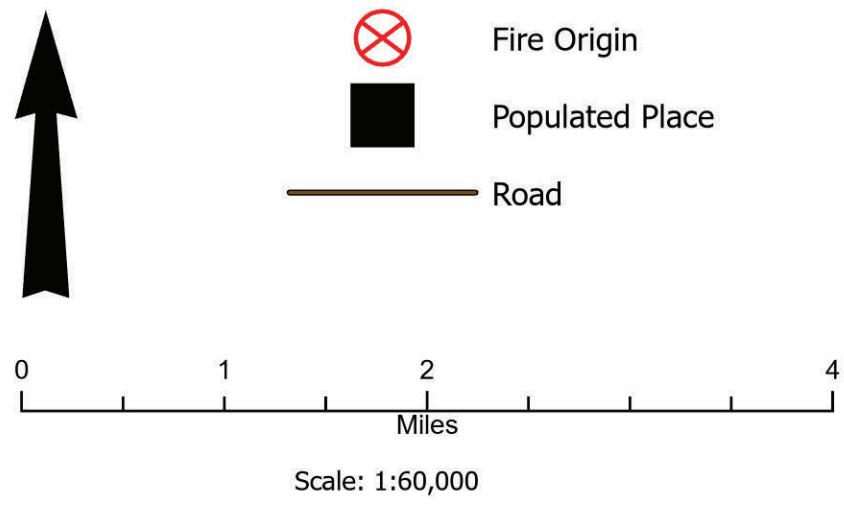


# Progression Map

East Fork  
AK-GAD-000160  
June 18, 2022

159,043 acres at 6/17/2022 20:21

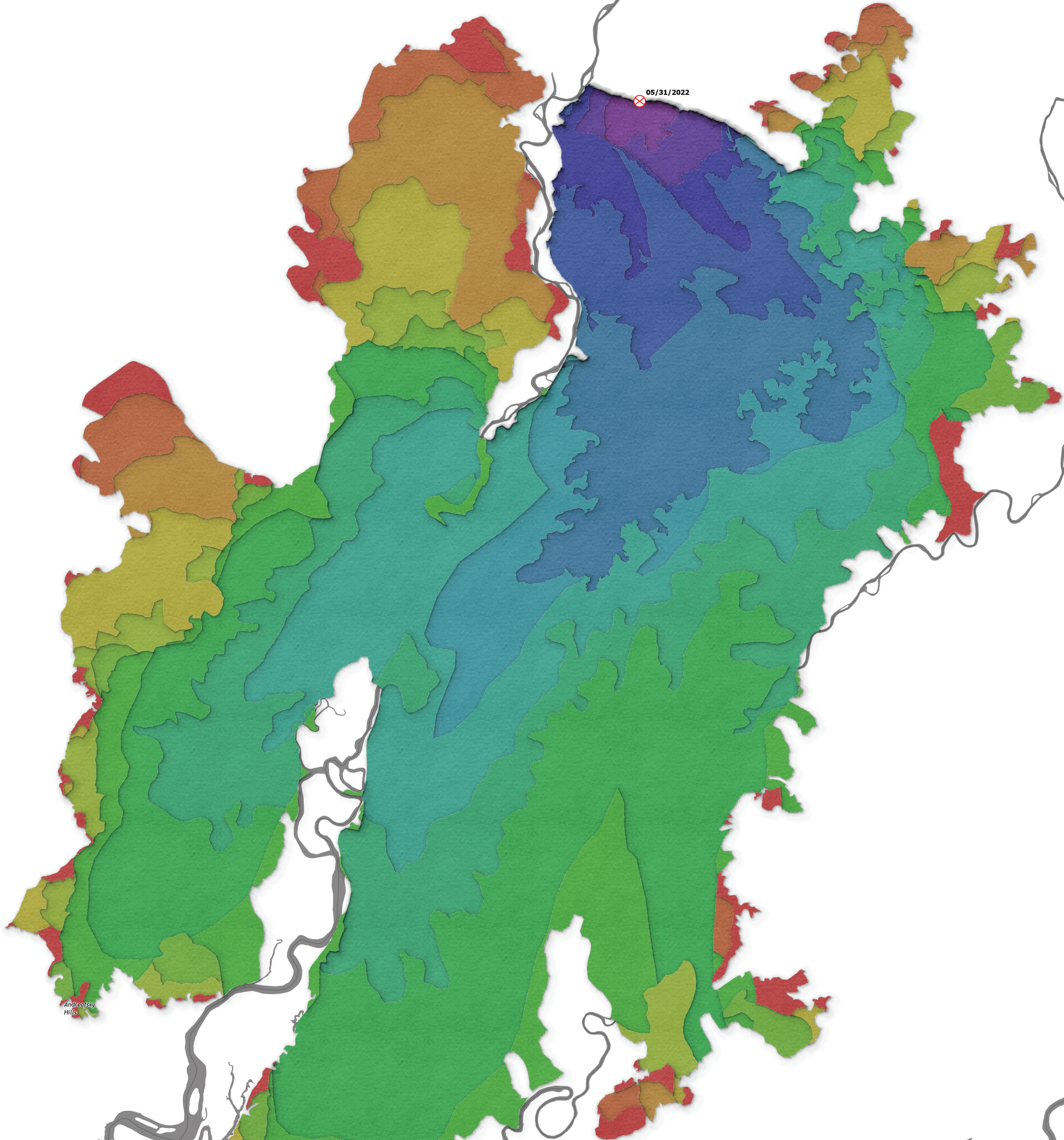


## Fire Progression

20220601 @ 2137	648ac	+648ac
20220602 @ 2108	1,788ac	+1,140ac
20220603 @ 2344	4,365ac	+2,577ac
20220604 @ 2138	10,511ac	+6,146ac
20220606 @ 2128	22,729ac	+12,218ac
20220607 @ 1402	29,784ac	+7,055ac
20220608 @ 2215	49,905ac	+20,121ac
20220609 @ 2135	71,263ac	+21,358ac
20220610 @ 1427	105,906ac	+34,643ac
20220611 @ 1427	119,238ac	+13,332ac
20220612 @ 1725	123,218ac	+3,980ac
20220613 @ 0920	128,685ac	+5,467ac
20220614 @ 0909	140,767ac	+12,082ac
20220615 @ 1748	149,457ac	+8,690ac
20220616 @ 1721	153,952ac	+4,495ac
20220617 @ 1946	159,043ac	+5,091ac



AK Black IMT  
6/17/2022 22:36  
NAD 1983 UTM Zone 3N CM -163



Saint Mary's

Pitkas Point

Kalak

Pilot Station

Get Mobile Maps

