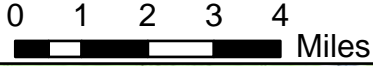


149° 44'W 149° 40'W 149° 36.01'W 149° 32'W 149° 28'W 149° 24'W 149° 20'W 149° 16'W 149° 12'W 149° 8'W 149° 4'W 149° W

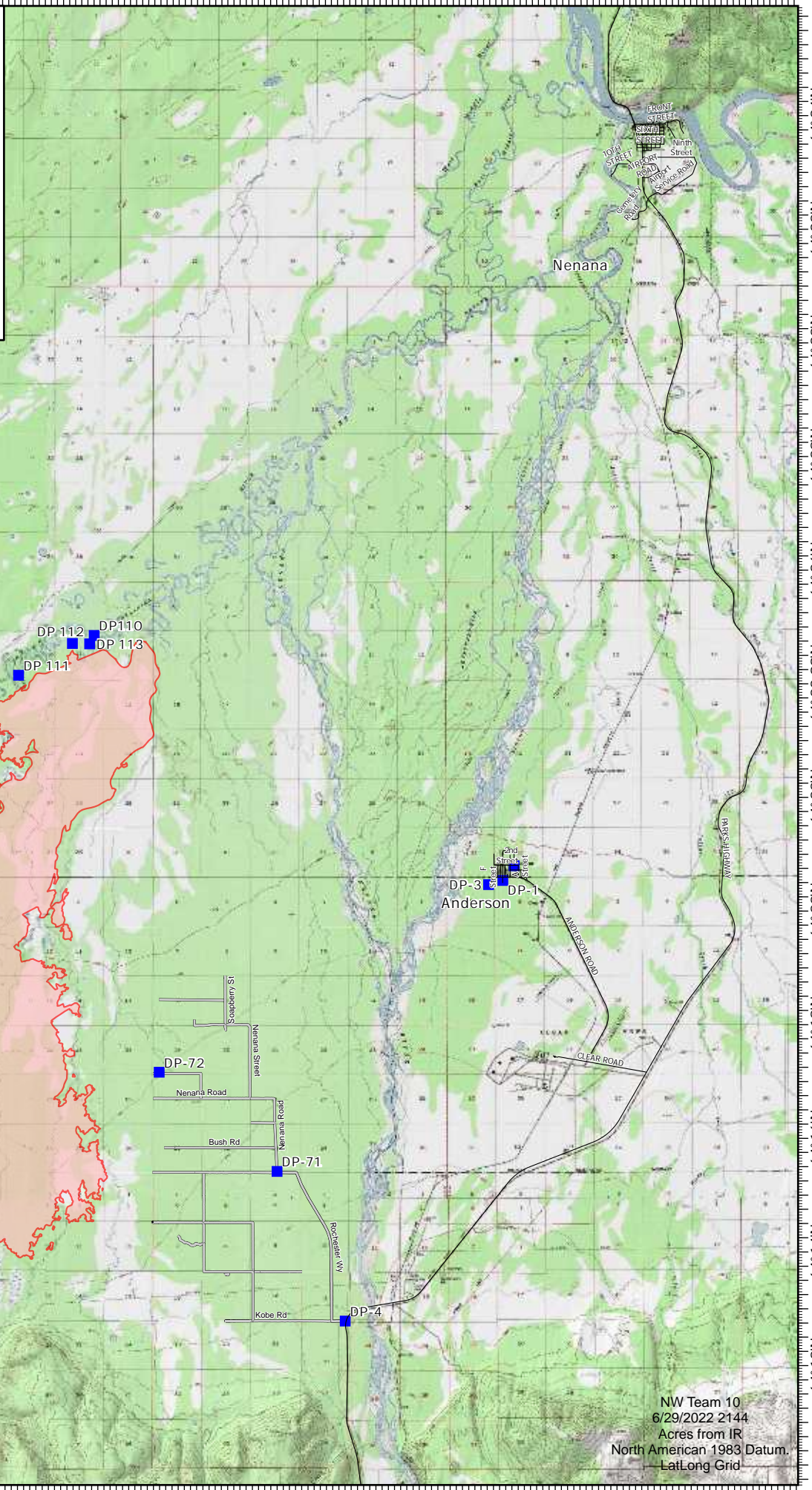
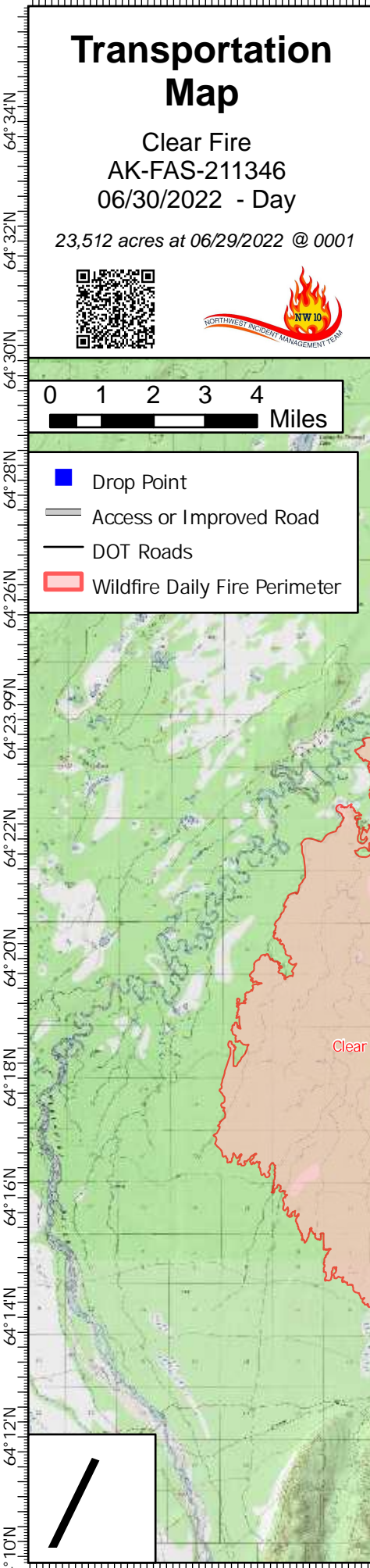
# Transportation Map

Clear Fire  
AK-FAS-211346  
06/30/2022 - Day

23,512 acres at 06/29/2022 @ 0001



- Drop Point
- Access or Improved Road
- DOT Roads
- Wildfire Daily Fire Perimeter



NW Team 10  
6/29/2022 2144  
Acres from IR  
North American 1983 Datum  
LatLong Grid

149° 44'W 149° 40'W 149° 36.01'W 149° 32'W 149° 28'W 149° 24'W 149° 20'W 149° 16'W 149° 12'W 149° 8'W 149° 4'W 149° W