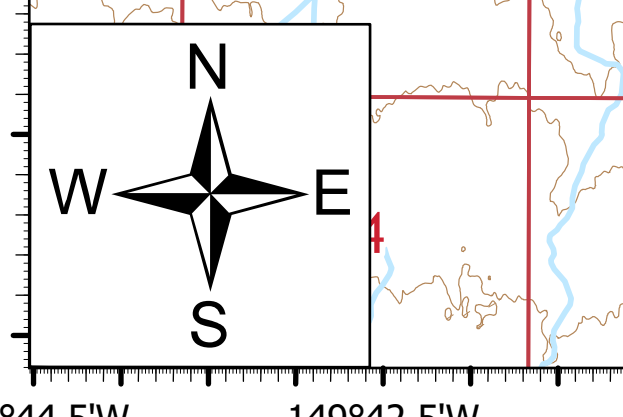
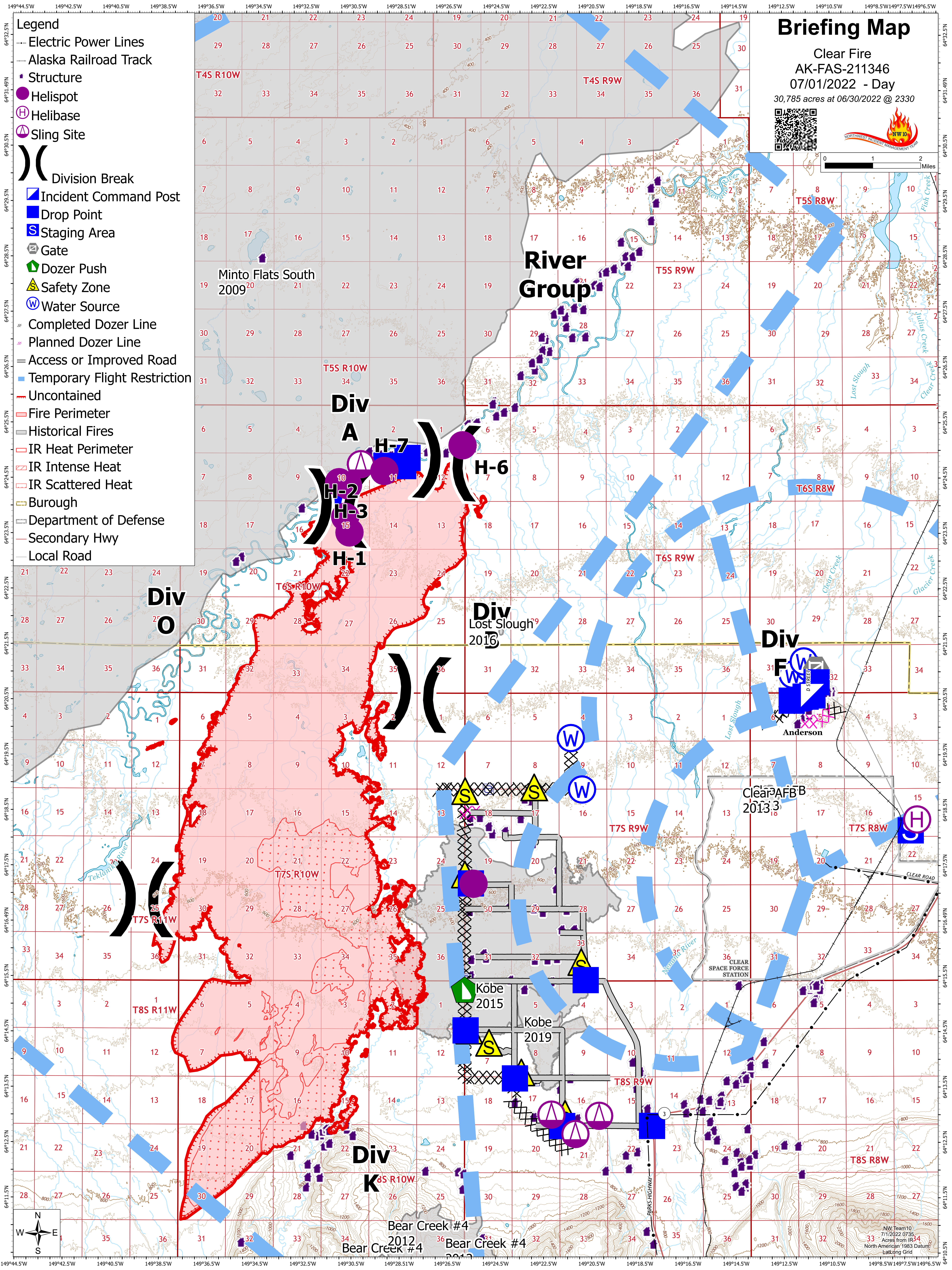
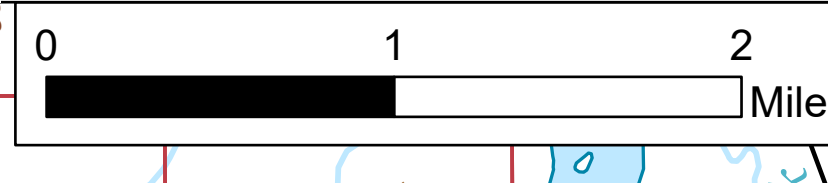


- Legend**
- Electric Power Lines
 - Alaska Railroad Track
 - Structure
 - Helispot
 - ⊕ Helibase
 - ⊖ Sling Site
 -) Division Break
 - ▣ Incident Command Post
 - ▣ Drop Point
 - ▣ Staging Area
 - ⊠ Gate
 - ▣ Dozer Push
 - ⚠ Safety Zone
 - ⊕ Water Source
 - ⊗ Completed Dozer Line
 - ⊗ Planned Dozer Line
 - Access or Improved Road
 - ▣ Temporary Flight Restriction
 - ▣ Uncontained
 - ▣ Fire Perimeter
 - ▣ Historical Fires
 - ▣ IR Heat Perimeter
 - ▣ IR Intense Heat
 - ▣ IR Scattered Heat
 - ▣ Burough
 - ▣ Department of Defense
 - Secondary Hwy
 - Local Road

Briefing Map

Clear Fire
 AK-FAS-211346
 07/01/2022 - Day
 30,785 acres at 06/30/2022 @ 2330





NW Team 10
 7/1/2022 0735
 Acres from IR 34
 North American 1983 Datum
 Lat/Long Grid