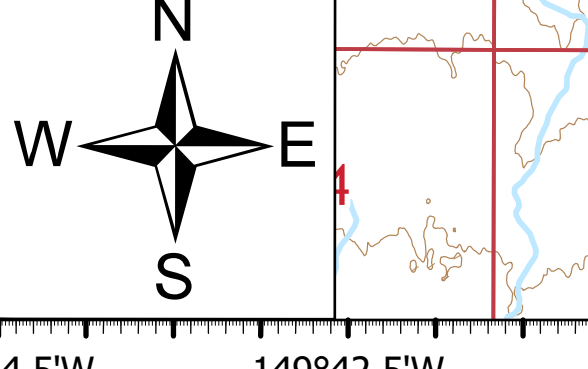
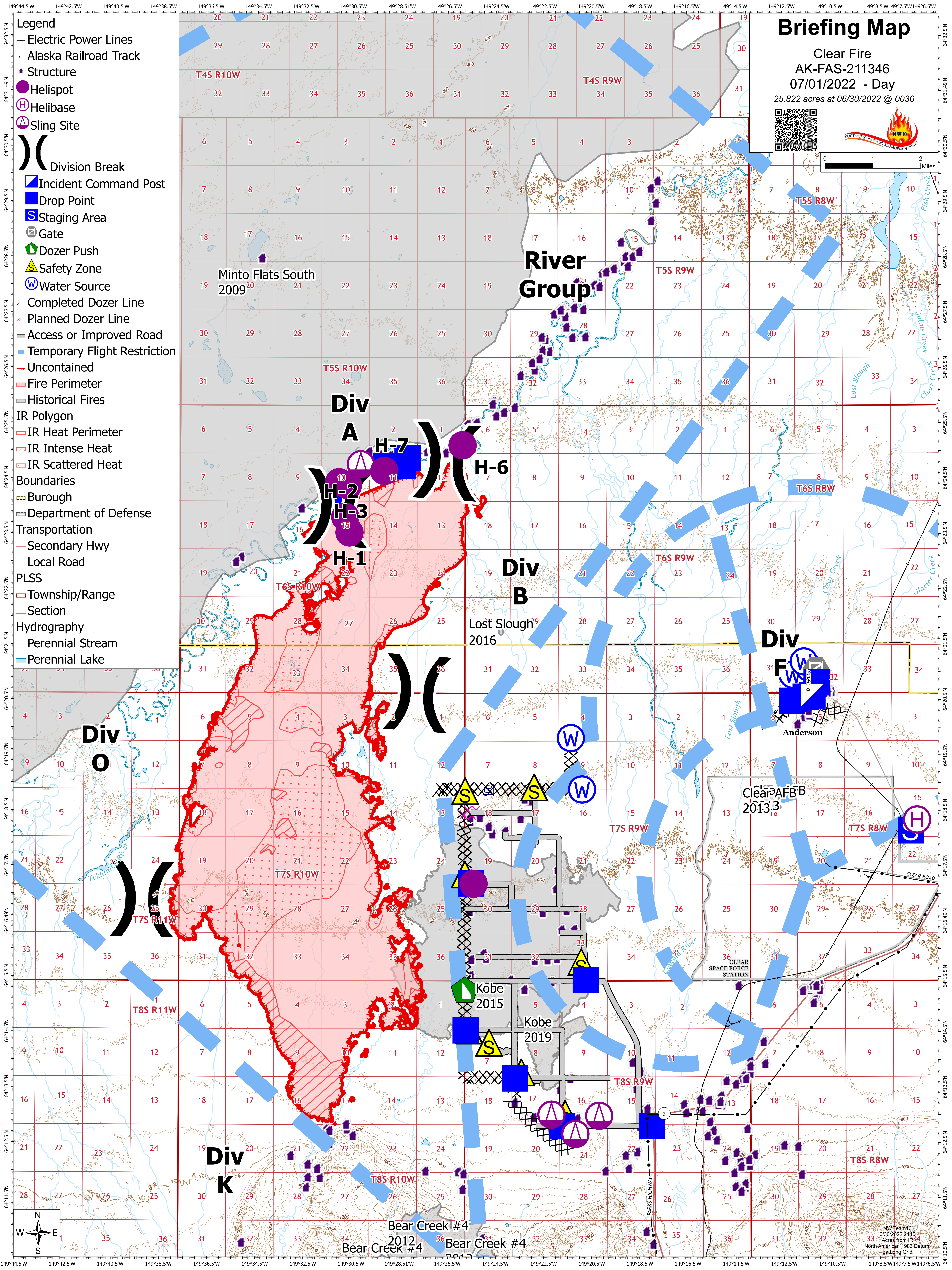


- Legend**
- Electric Power Lines
 - Alaska Railroad Track
 - Structure
 - Helispot
 - ⊕ Helibase
 - ⊗ Sling Site
 -) (Division Break
 - ▣ Incident Command Post
 - ▣ Drop Point
 - ▣ Staging Area
 - ⊕ Gate
 - ▶ Dozer Push
 - ⚠ Safety Zone
 - ⊕ Water Source
 - ⊗ Completed Dozer Line
 - ⊗ Planned Dozer Line
 - Access or Improved Road
 - ▣ Temporary Flight Restriction
 - Uncontained
 - ▣ Fire Perimeter
 - ▣ Historical Fires
 - IR Polygon
 - ▣ IR Heat Perimeter
 - ▣ IR Intense Heat
 - ▣ IR Scattered Heat
 - Boundaries
 - ▣ Burough
 - ▣ Department of Defense
 - Transportation
 - Secondary Hwy
 - Local Road
 - PLSS
 - ▣ Township/Range
 - ▣ Section
 - Hydrography
 - Perennial Stream
 - ▣ Perennial Lake

Briefing Map

Clear Fire
 AK-FAS-211346
 07/01/2022 - Day
 25,822 acres at 06/30/2022 @ 0030



NW Team 10
 6/30/2022 2146
 33 Acres from IR 34
 North American 1983 Datum
 Lat/Long Grid