

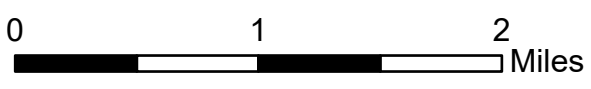
# Ops Map

Clear Fire

AK-FAS-211346

07/01/2022 - Day

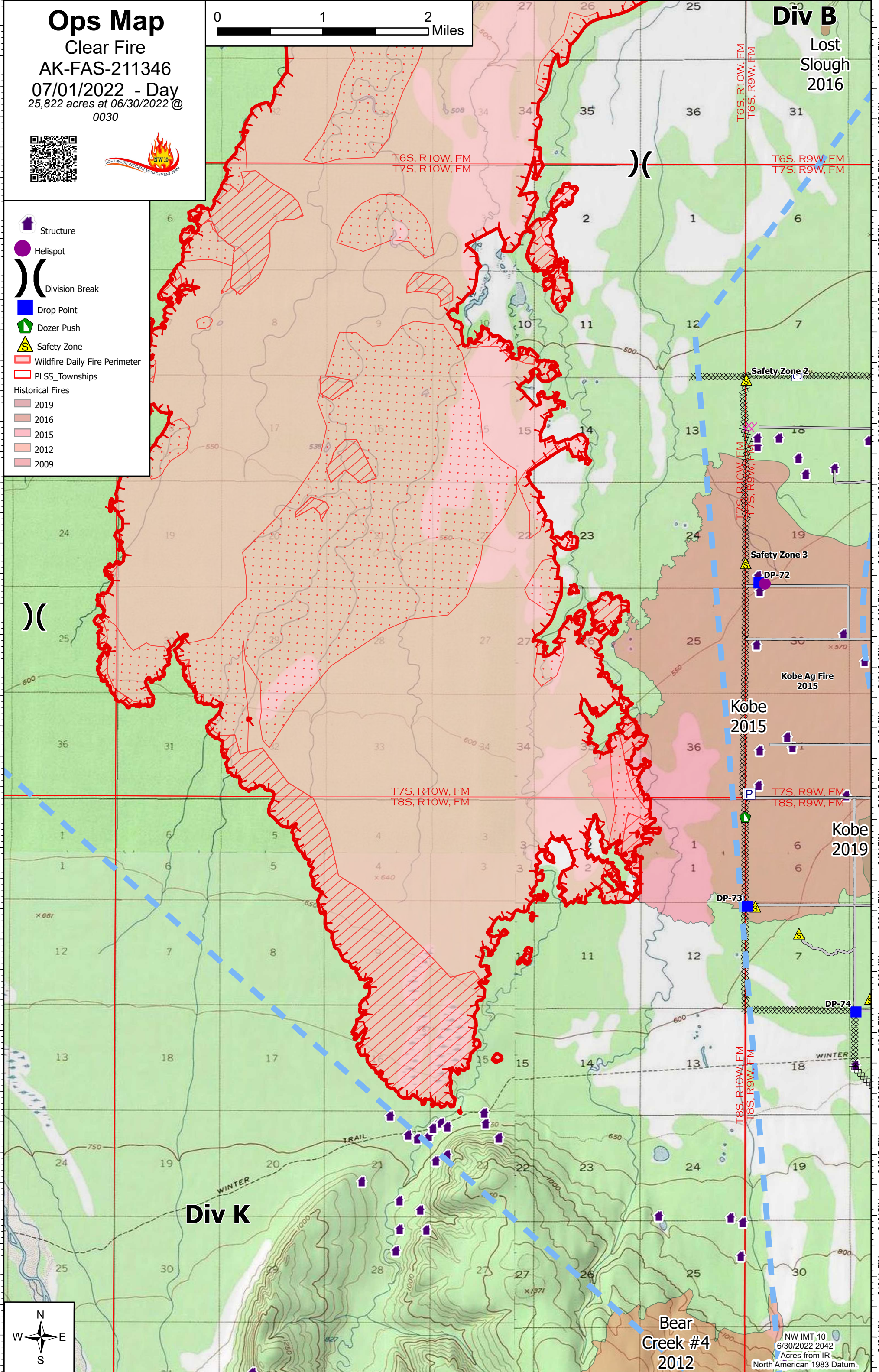
25,822 acres at 06/30/2022 @ 0030



**Div B**

Lost Slough 2016

- Structure
- Hellspot
- Division Break
- Drop Point
- Dozer Push
- Safety Zone
- Wildfire Daily Fire Perimeter
- PLSS Townships
- Historical Fires
  - 2019
  - 2016
  - 2015
  - 2012
  - 2009



T6S, R10W, FM  
T7S, R10W, FM

T6S, R9W, FM  
T7S, R9W, FM

T7S, R10W, FM  
T8S, R10W, FM

T7S, R9W, FM  
T8S, R9W, FM

Safety Zone 2

Safety Zone 3

Kobe 2015

Kobe Ag Fire 2015

Kobe 2019

**Div K**

Bear Creek #4 2012

NW IMT 10  
6/30/2022 2042  
Acres from IR  
North American 1983 Datum.

