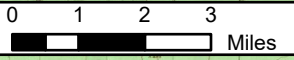


149°44'W 149°40'W 149°36.01'W 149°32'W 149°28'W 149°24'W 149°20'W 149°16'W 149°12'W 149°8'W 149°4'W 149°W

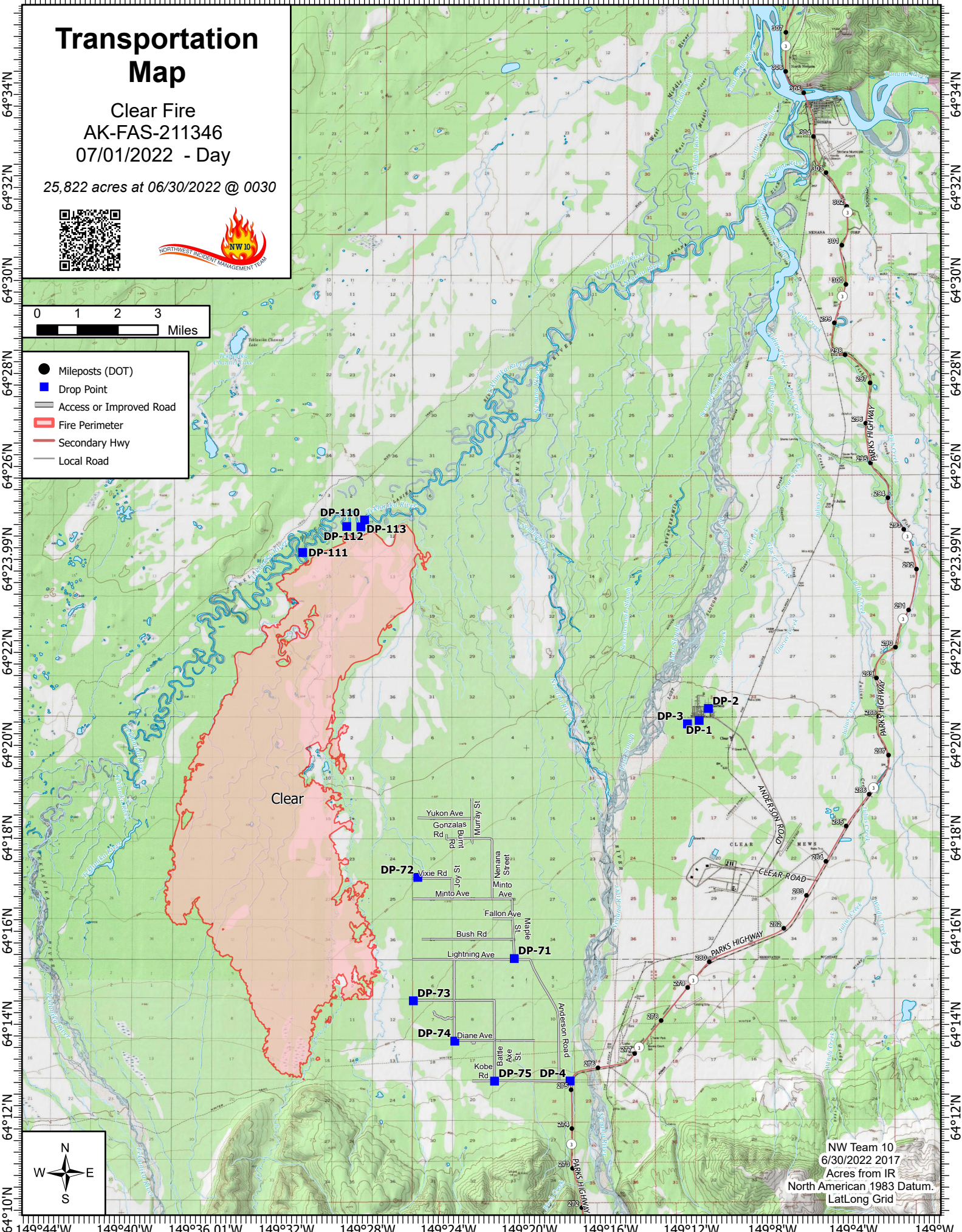
Transportation Map

Clear Fire
AK-FAS-211346
07/01/2022 - Day

25,822 acres at 06/30/2022 @ 0030



- Mileposts (DOT)
- Drop Point
- Access or Improved Road
- ▭ Fire Perimeter
- Secondary Hwy
- Local Road



Clear

DP-110
DP-112
DP-113
DP-111

DP-72

DP-71

DP-73

DP-74

DP-75

DP-4

DP-3

DP-1

DP-2

NW Team 10
6/30/2022 2017
Acres from IR
North American 1983 Datum.
LatLong Grid



149°44'W 149°40'W 149°36.01'W 149°32'W 149°28'W 149°24'W 149°20'W 149°16'W 149°12'W 149°8'W 149°4'W 149°W