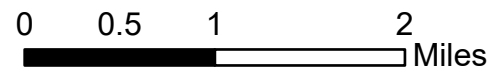




# IAP Map

Clear Fire  
AK-FAS-211346  
07/05/2022 - Day

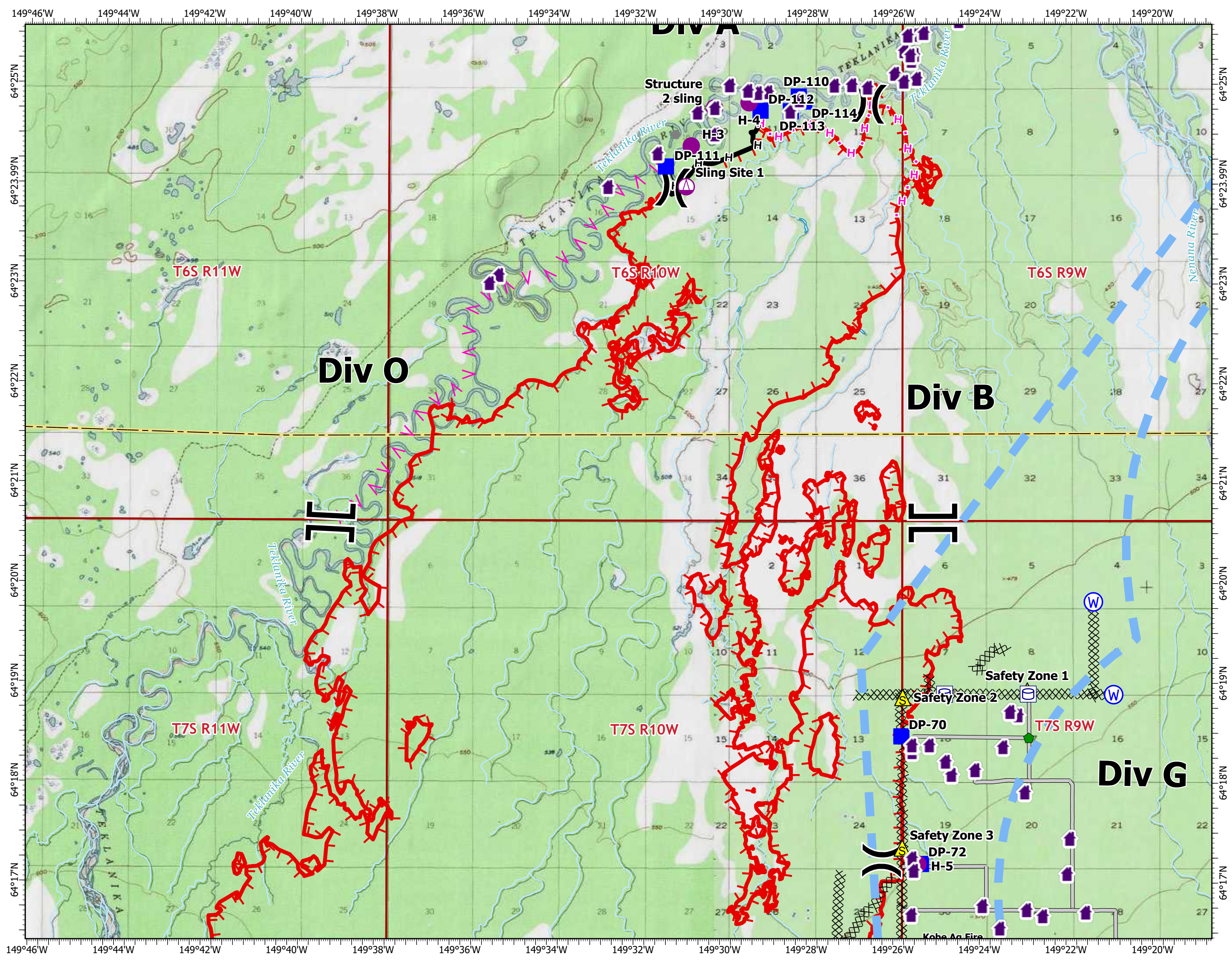
51,352 acres at 07/4/2022 @ 0200



- Structure
- Helispot
- Sling Site
- Division Break
- Branch Break
- Drop Point
- Other
- Repair Point
- Safety Zone
- Water Source
- Water Tank
- Completed Dozer Line
- Completed Hand Line
- Planned Dozer Line
- Planned Fuel Break
- Planned Hand Line
- Access or Improved Road
- Temporary Flight Restriction
- Contained
- Uncontained
- Township/Range
- Perennial Stream
- Perennial Lake
- Borough

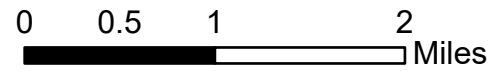


NW Team 10  
7/4/2022 2106  
Acres from IR  
North American 1983 Datum.  
LatLong Grid



# IAP Map

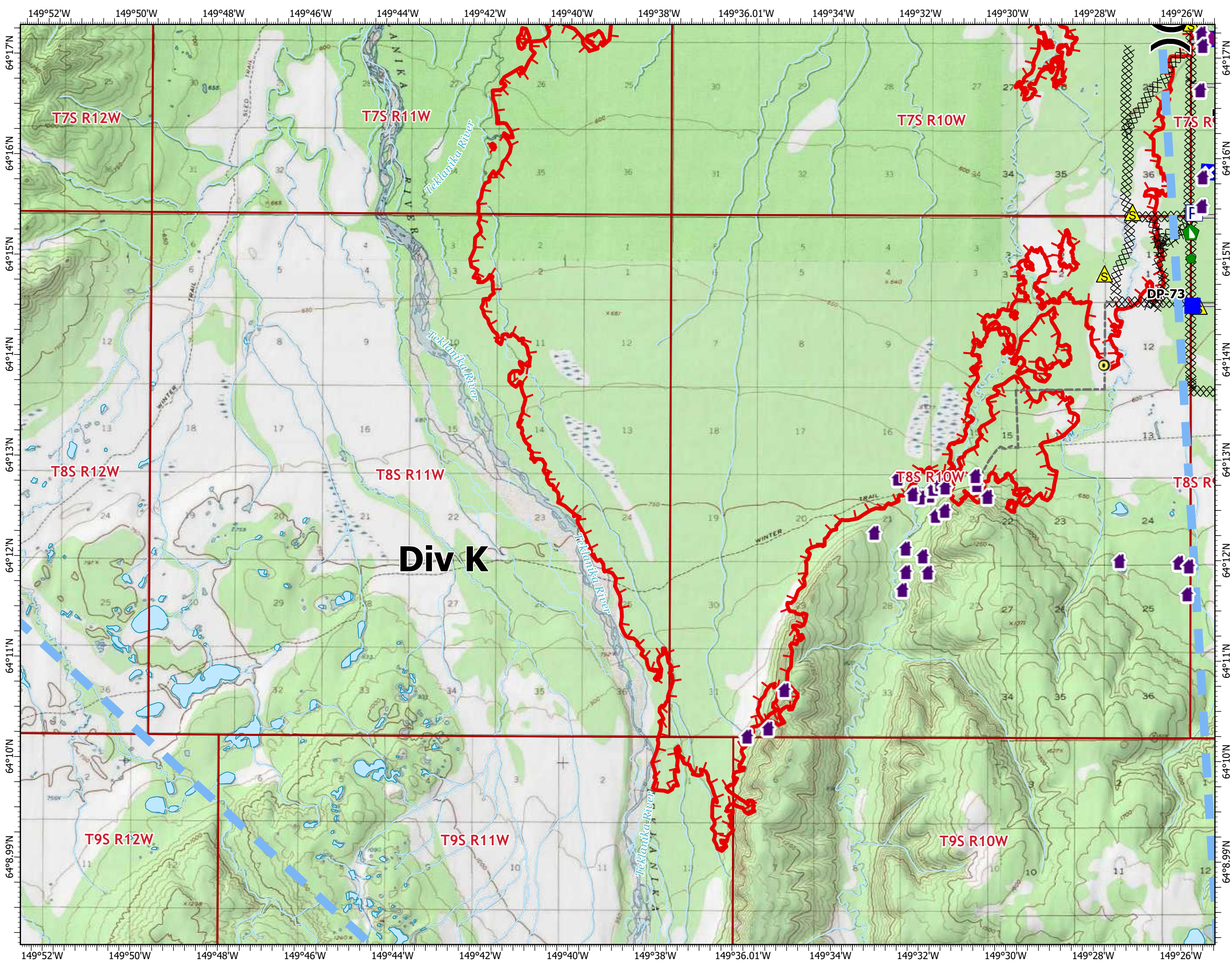
Clear Fire  
AK-FAS-211346  
07/05/2022 - Day  
51,352 acres at 07/4/2022 @ 0200



- Structure
- Other
- Helispot
- Division Break
- Drop Point
- Closure
- Repair Point
- Dozer Push
- Safety Zone
- Pump
- Water Tank
- Completed Dozer Line
- Access or Improved Road
- Other
- Temporary Flight Restriction
- Uncontained
- Township/Range
- Perennial Stream
- Perennial Lake
- Borough

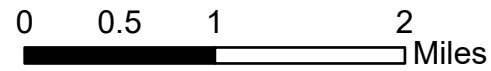


NW Team 10  
7/4/2022 2107  
Acres from IR  
North American 1983 Datum.  
LatLong Grid



# IAP Map

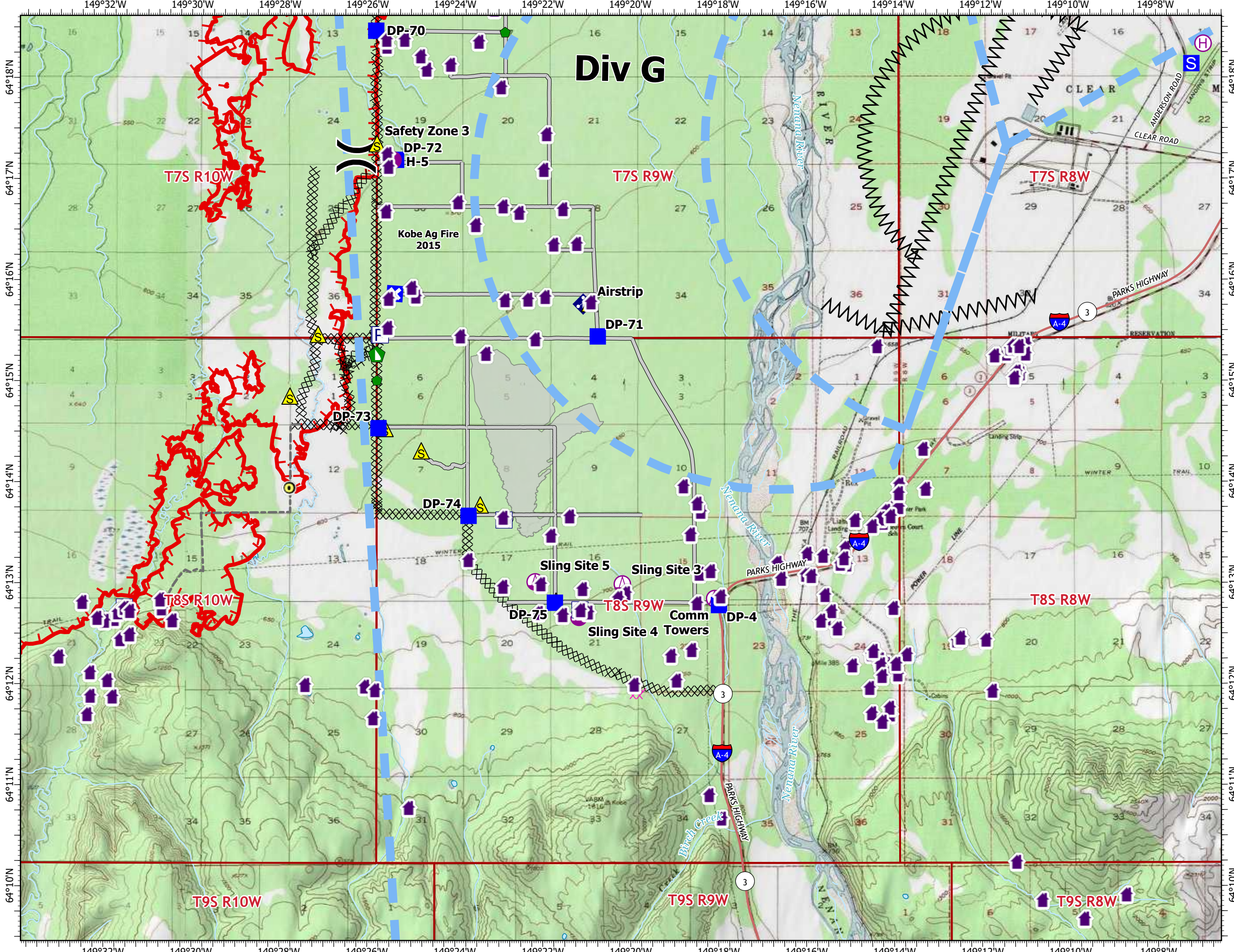
Clear Fire  
AK-FAS-211346  
07/05/2022 - Day  
51,352 acres at 07/4/2022 @ 0200



- |  |                     |  |                              |
|--|---------------------|--|------------------------------|
|  | Structure           |  | Completed Dozer Line         |
|  | Other               |  | Completed Fuel Break         |
|  | Aerial Hazard       |  | Planned Dozer Line           |
|  | Helispot            |  | Access or Improved Road      |
|  | Helibase            |  | Other                        |
|  | Sling Site          |  | Temporary Flight Restriction |
|  | Division Break      |  | Uncontained                  |
|  | Drop Point          |  | Kobe Ag Fire 2015            |
|  | Closure             |  | Secondary Hwy                |
|  | Staging Area        |  | Local Road                   |
|  | Repair Point        |  | TNM Derived Names            |
|  | Dozer Push          |  | Secondary Hwy                |
|  | Mobile Weather Unit |  | Local Road                   |
|  | Safety Zone         |  | Township/Range               |
|  | Other Property      |  | Perennial Stream             |
|  | Pump                |  | Perennial Lake               |
|  | Water Tank          |  | Burough                      |

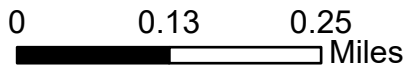







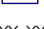



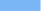
NW Team 10  
7/4/2022 2107  
Acres from IR  
North American 1983 Datum.  
LatLong Grid



**IAP Map**  
 Clear Fire  
 AK-FAS-211346  
 07/05/2022 - Day  
 51,352 acres at 07/4/2022 @ 0200





-  Incident Command Post
-  Drop Point
-  Gate
-  Water Source
-  Pump
-  Completed Dozer Line
-  Completed Fuel Break
-  Planned Fuel Break
-  Temporary Flight Restriction
-  Structure



NW Team 10  
 7/4/2022 2109  
 Acres from IR  
 North American 1983 Datum.  
 LatLong Grid

