
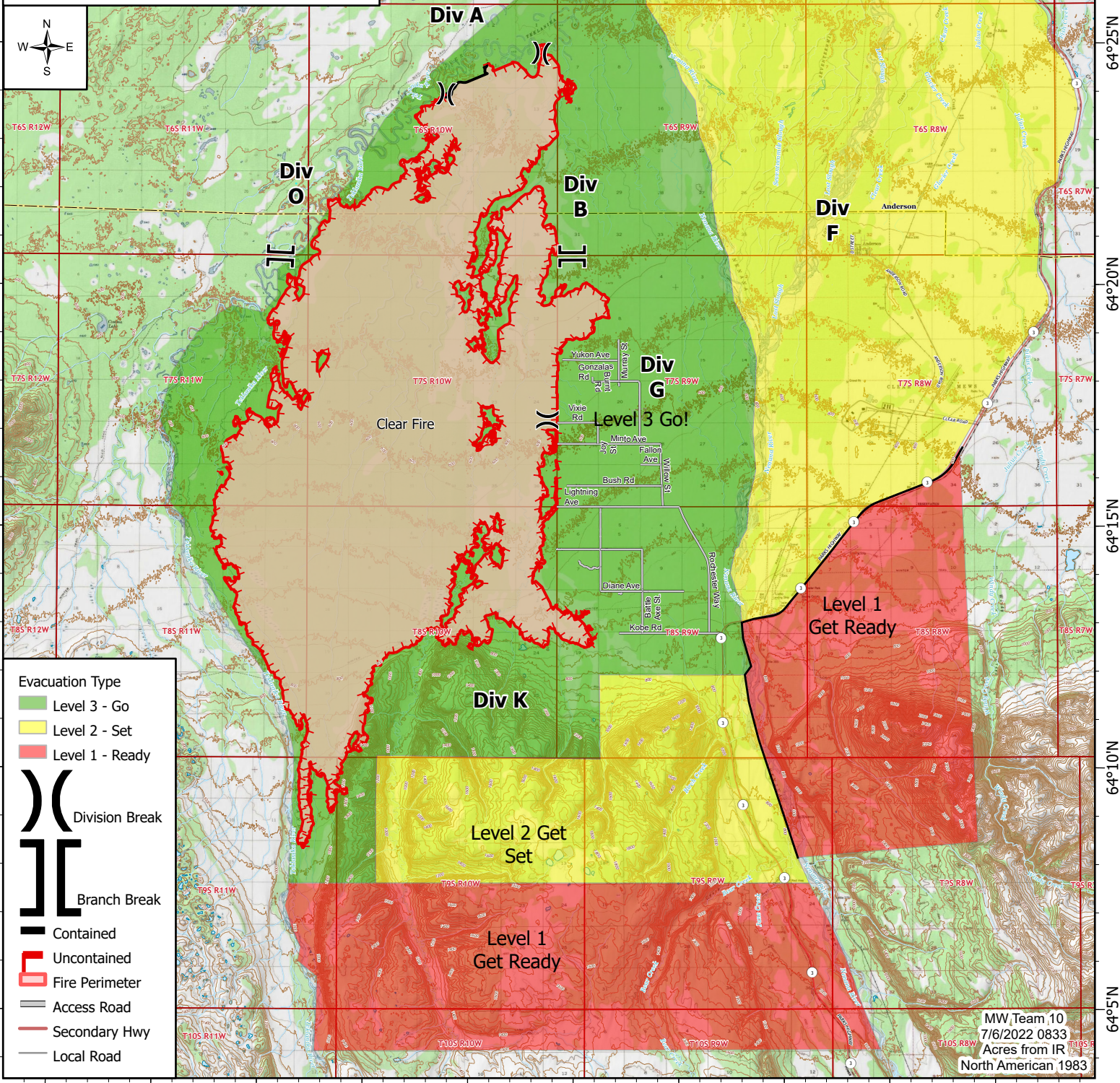
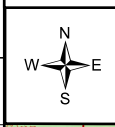
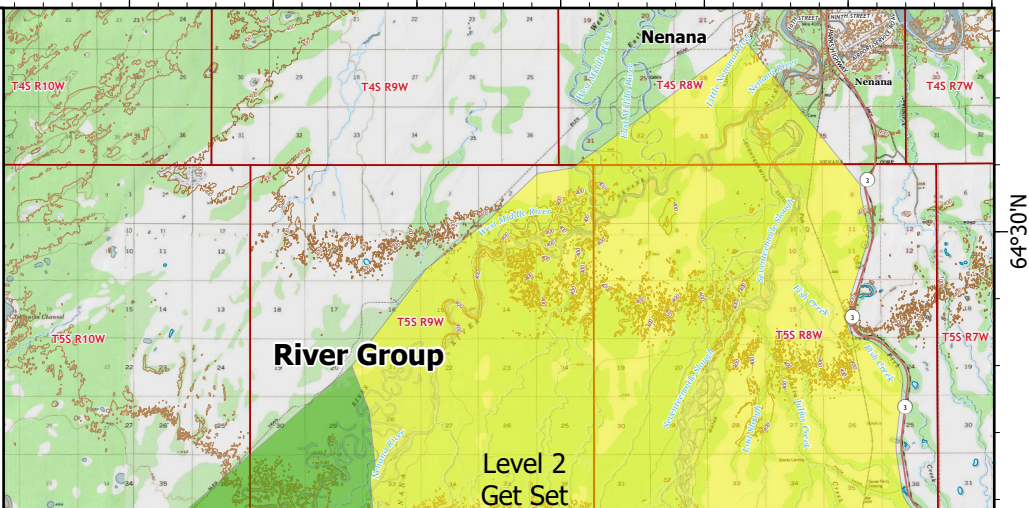


149°50'W 149°45'W 149°40'W 149°35'W 149°30'W 149°25'W 149°20'W 149°15'W 149°10'W 149°5'W 149°W

# Public Information Map

Clear Fire  
AK-FAS-211346  
07/06/2022

55,585 acres at 07/5/2022 @ 2330

**Evacuation Type**

- Level 3 - Go
- Level 2 - Set
- Level 1 - Ready

**Division Break**

**Branch Break**

**Contained**

**Uncontained**

**Fire Perimeter**

**Access Road**

**Secondary Hwy**

**Local Road**

MW, Team 10  
7/6/2022 0833  
Acres from IR  
North American 1983

149°50'W 149°45'W 149°40'W 149°35'W 149°30'W 149°25'W 149°20'W 149°15'W 149°10'W 149°5'W