
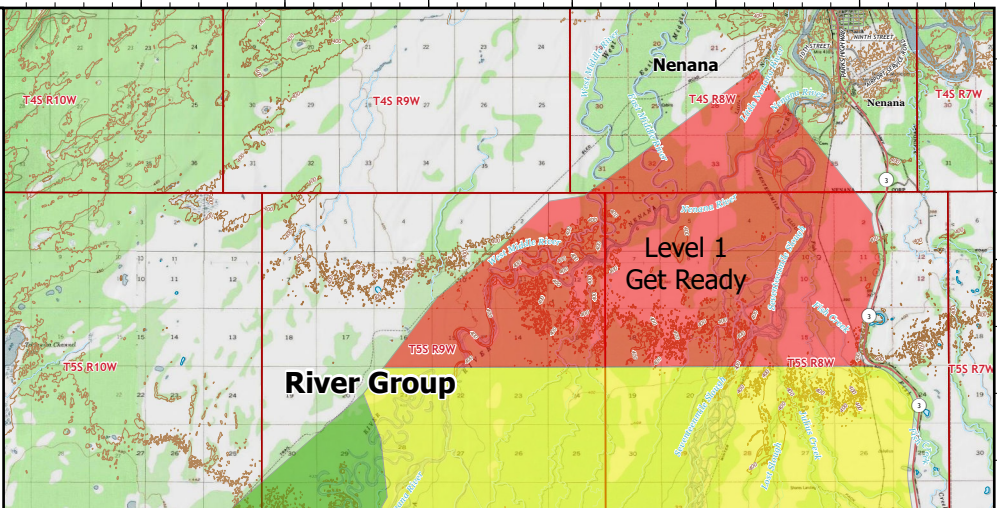


149°50'W 149°45'W 149°40'W 149°35'W 149°30'W 149°25'W 149°20'W 149°15'W 149°10'W 149°5'W

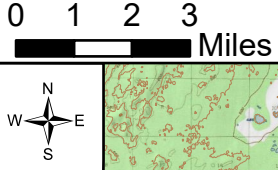
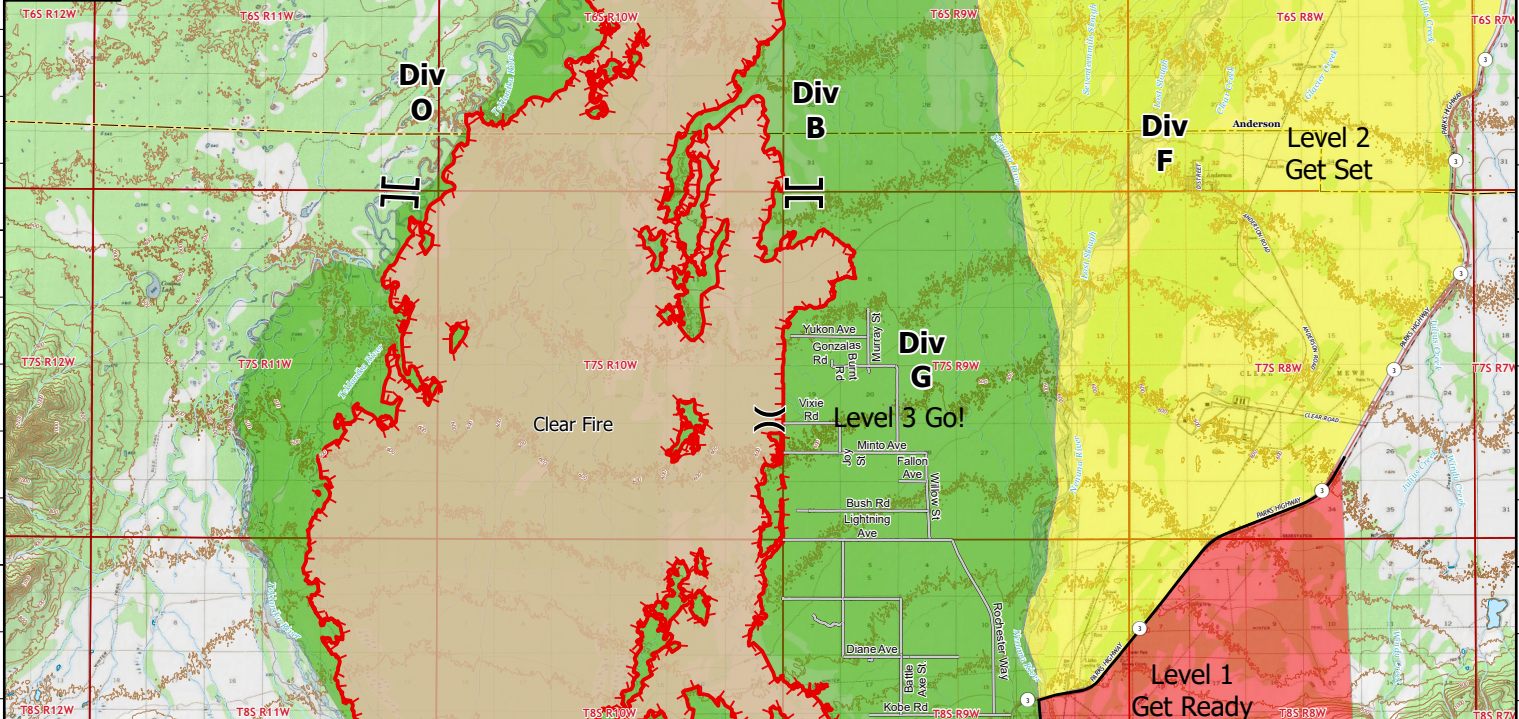
Public Information Map

Clear Fire
AK-FAS-211346
07/07/2022

55,585 acres at 07/5/2022 @ 2330






0 1 2 3 Miles






Evacuation Type


- Level 3 - Go
- Level 2 - Set
- Level 1 - Ready


Division Break 


Branch Break 

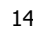
 Contained

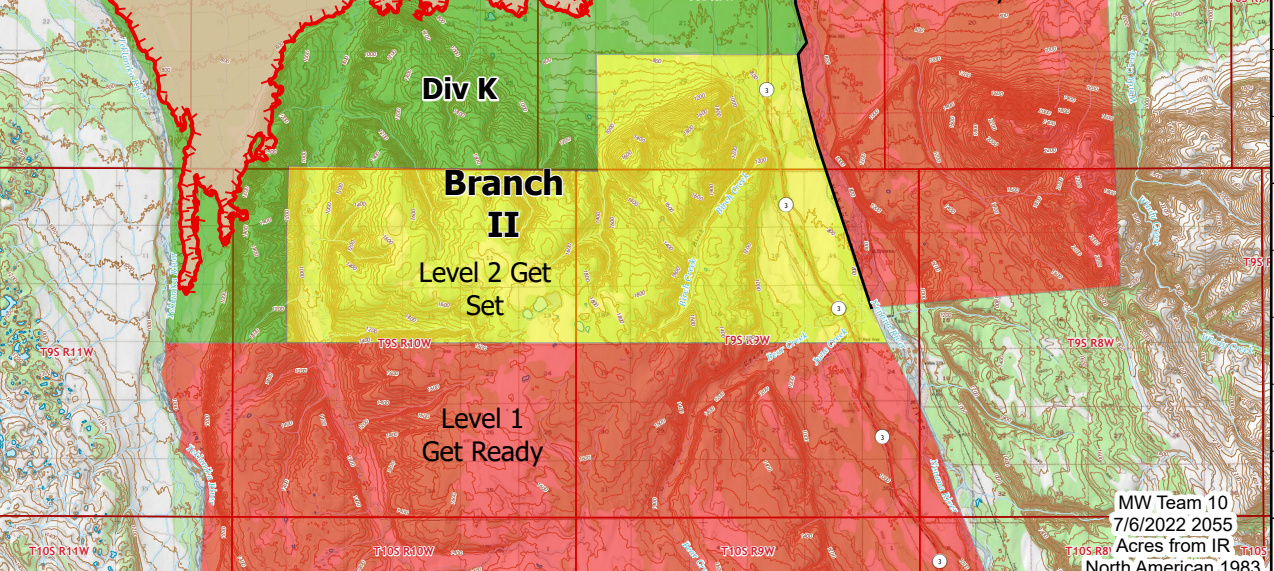
 Uncontained

 Fire Perimeter

 Access Road

 Secondary Hwy

 Local Road



149°50'W 149°45'W 149°40'W 149°35'W 149°30'W 149°25'W 149°20'W 149°15'W 149°10'W 149°5'W

MW Team 10
7/6/2022 2055
Acres from IR
North American 1983