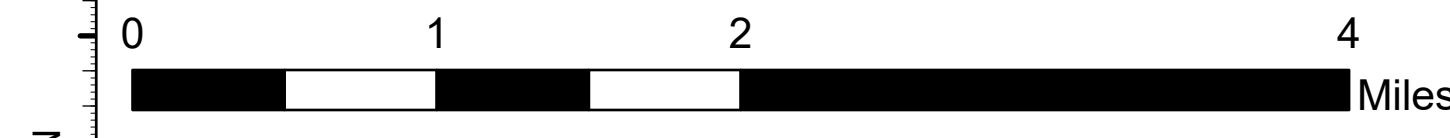


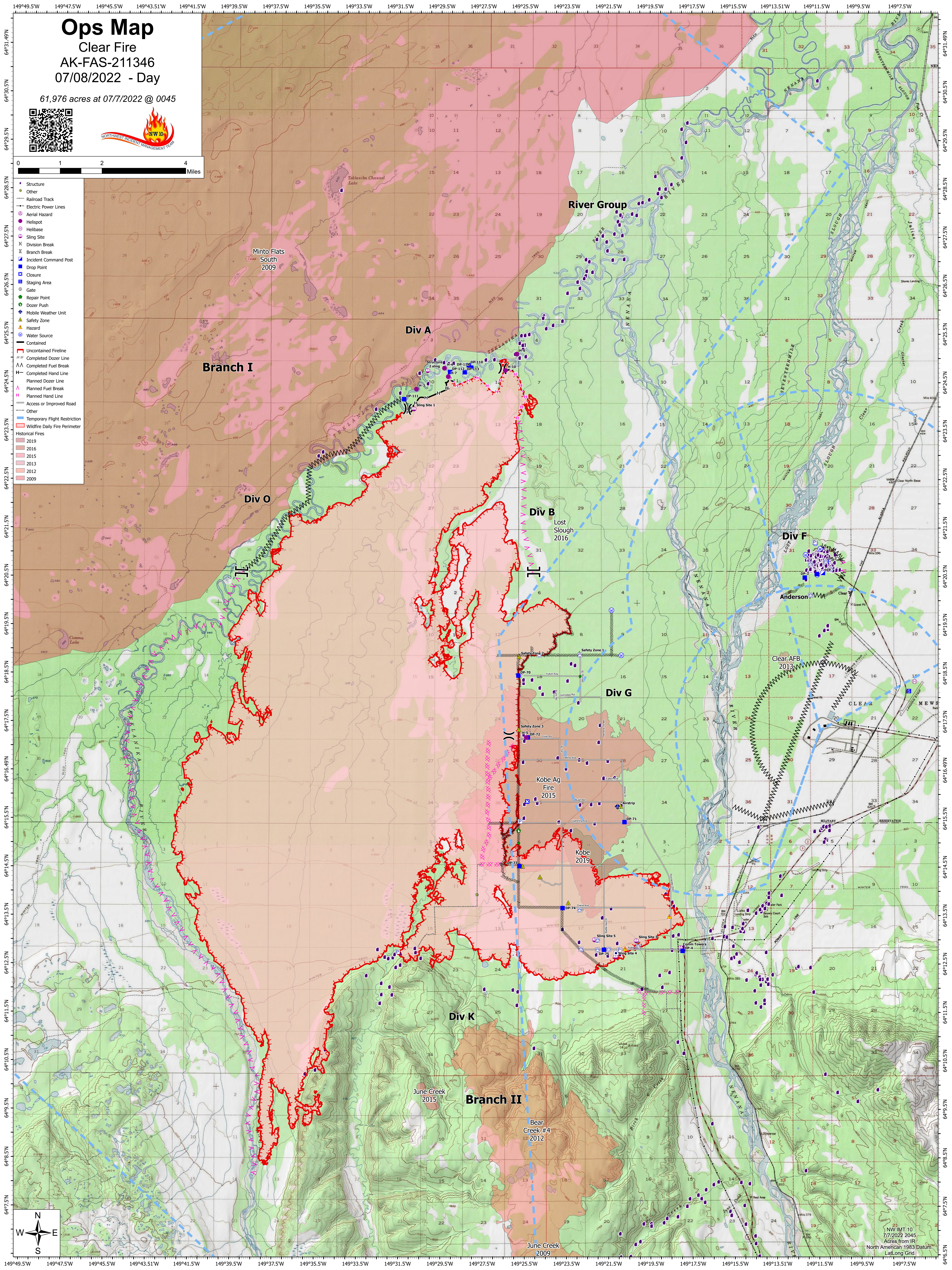
Ops Map

Clear Fire
AK-FAS-211346
07/08/2022 - Day

61,976 acres at 07/7/2022 @ 0045



- Structure
- Other
- Railroad Track
- Electric Power Lines
- Aerial Hazard
- Helispot
- Helibase
- Sling Site
- Division Break
- Branch Break
- Incident Command Post
- Drop Point
- Closure
- Staging Area
- Gate
- Repair Point
- Dozer Push
- Mobile Weather Unit
- Safety Zone
- Hazard
- Water Source
- Contained
- Uncontained Fireline
- Completed Dozer Line
- Completed Fuel Break
- Completed Hand Line
- Planned Dozer Line
- Planned Fuel Break
- Planned Hand Line
- Access or Improved Road
- Other
- Temporary Flight Restriction
- Wildfire Daily Fire Perimeter
- Historical Fires
- 2019
- 2016
- 2015
- 2013
- 2012
- 2009



River Group

Div A

Branch I

Div O

Div B
Lost Slough 2016

Div F

Anderson

Clear AFB
2013

Div G

Kobe Ag Fire
2015

Kobe
2019

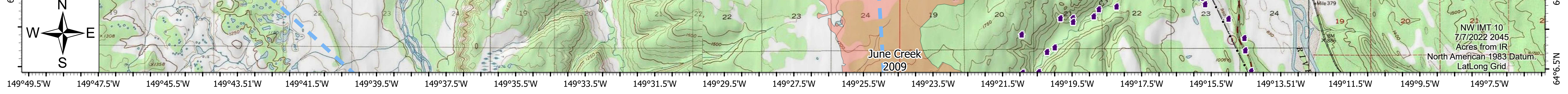
Div K

Branch II

June Creek
2015

Bear Creek #4
2012

June Creek
2009



NW IMT 10
7/7/2022 2045
Acres from IR
North American 1983 Datum
Lat/Long Grid