
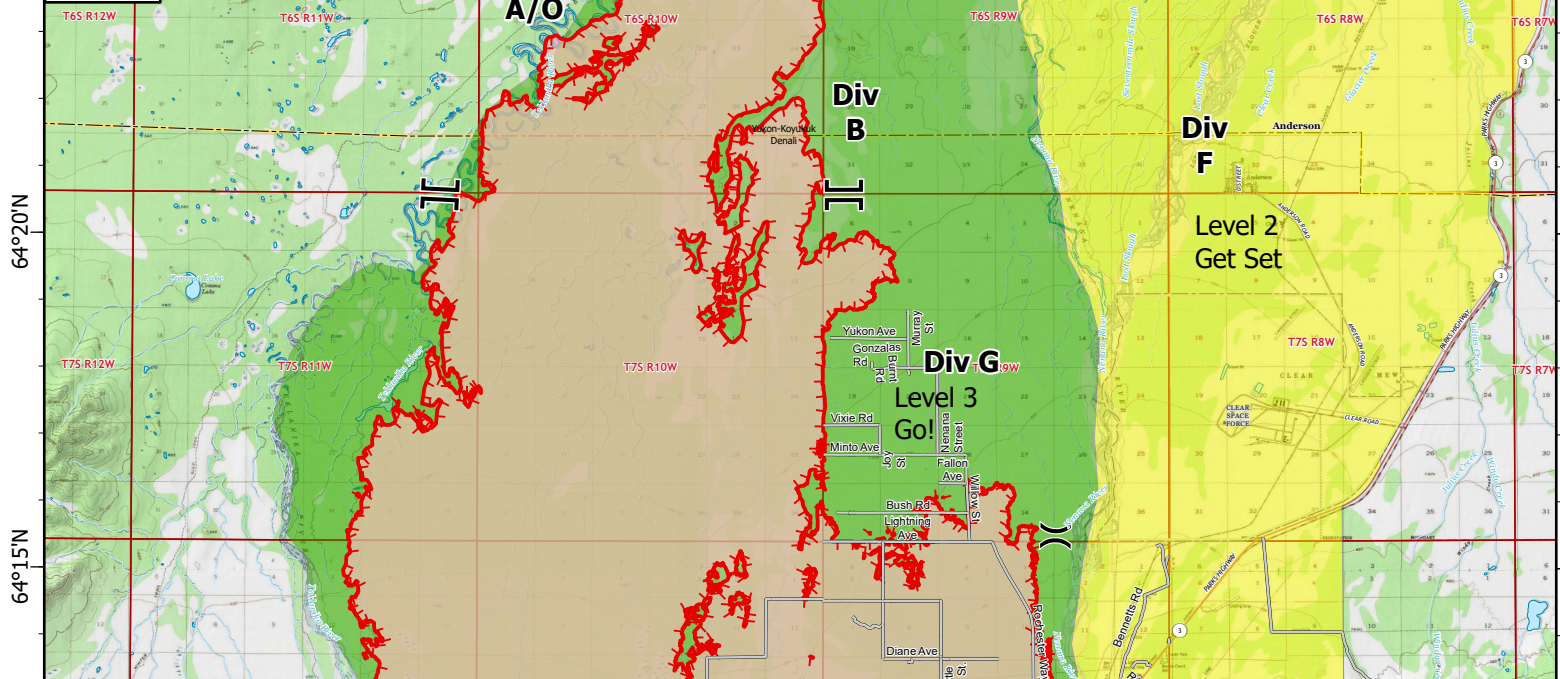
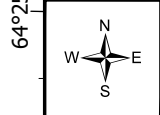
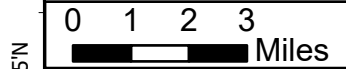
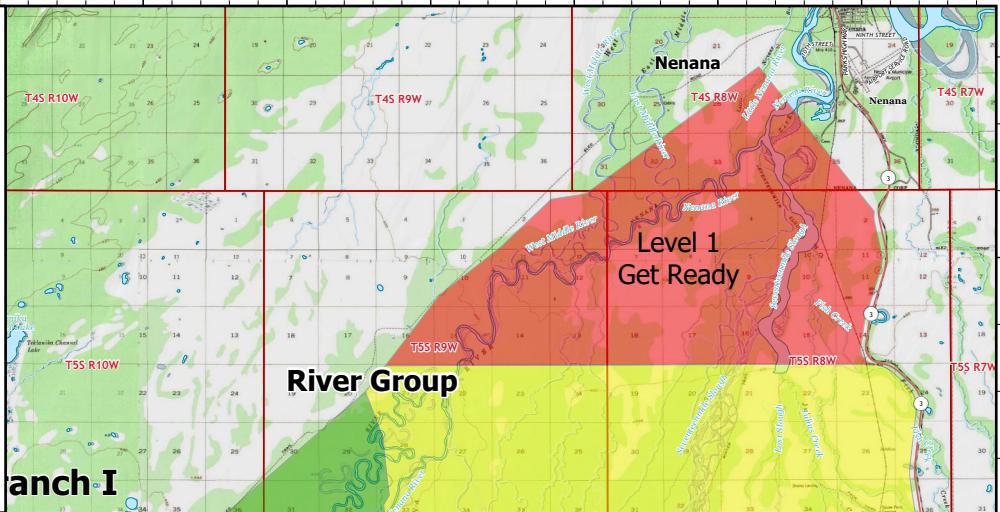


149°50'W 149°45'W 149°40'W 149°35'W 149°30'W 149°25'W 149°20'W 149°15'W 149°10'W 149°5'W

# Public Information Map


Clear Fire  
AK-FAS-211346  
07/11/2022


70,593 acres at 07/11/2022 @ 0215






**Evacuation Type**


- Level 3 - Go
- Level 2 - Set
- Level 1 - Ready


**Division Break** 

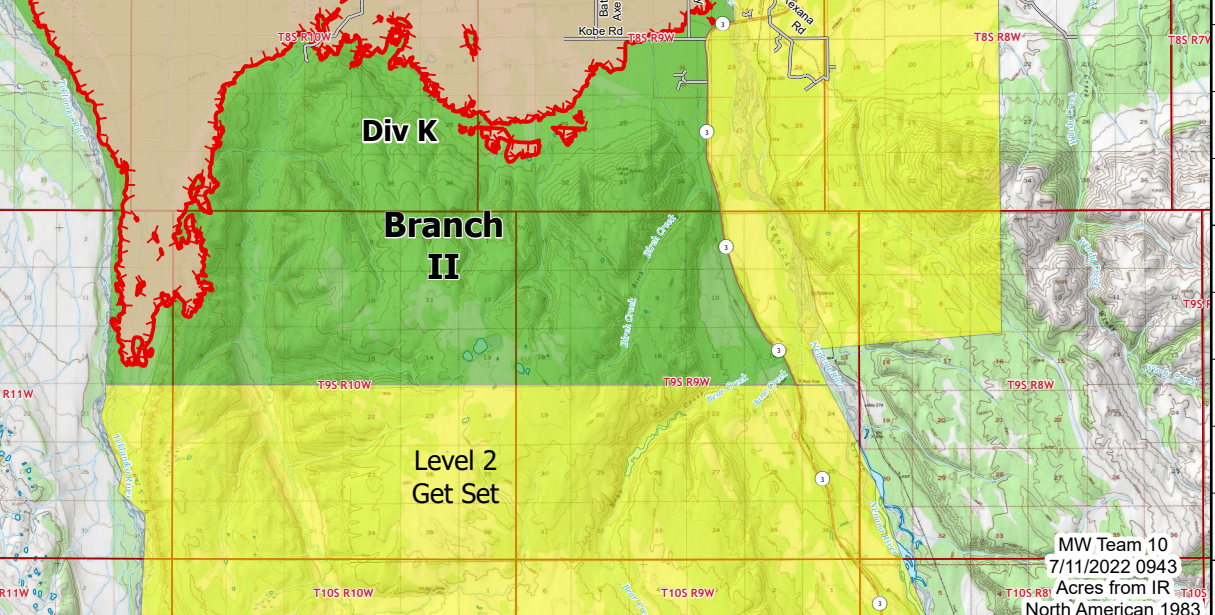
**Branch Break** 

**Contained** 

**Uncontained** 

**Fire Perimeter** 

**Access Road** 



MW Team 10  
7/11/2022 0943  
Acres from IR  
North American 1983

149°50'W 149°45'W 149°40'W 149°35'W 149°30'W 149°25'W 149°20'W 149°15'W 149°10'W 149°5'W