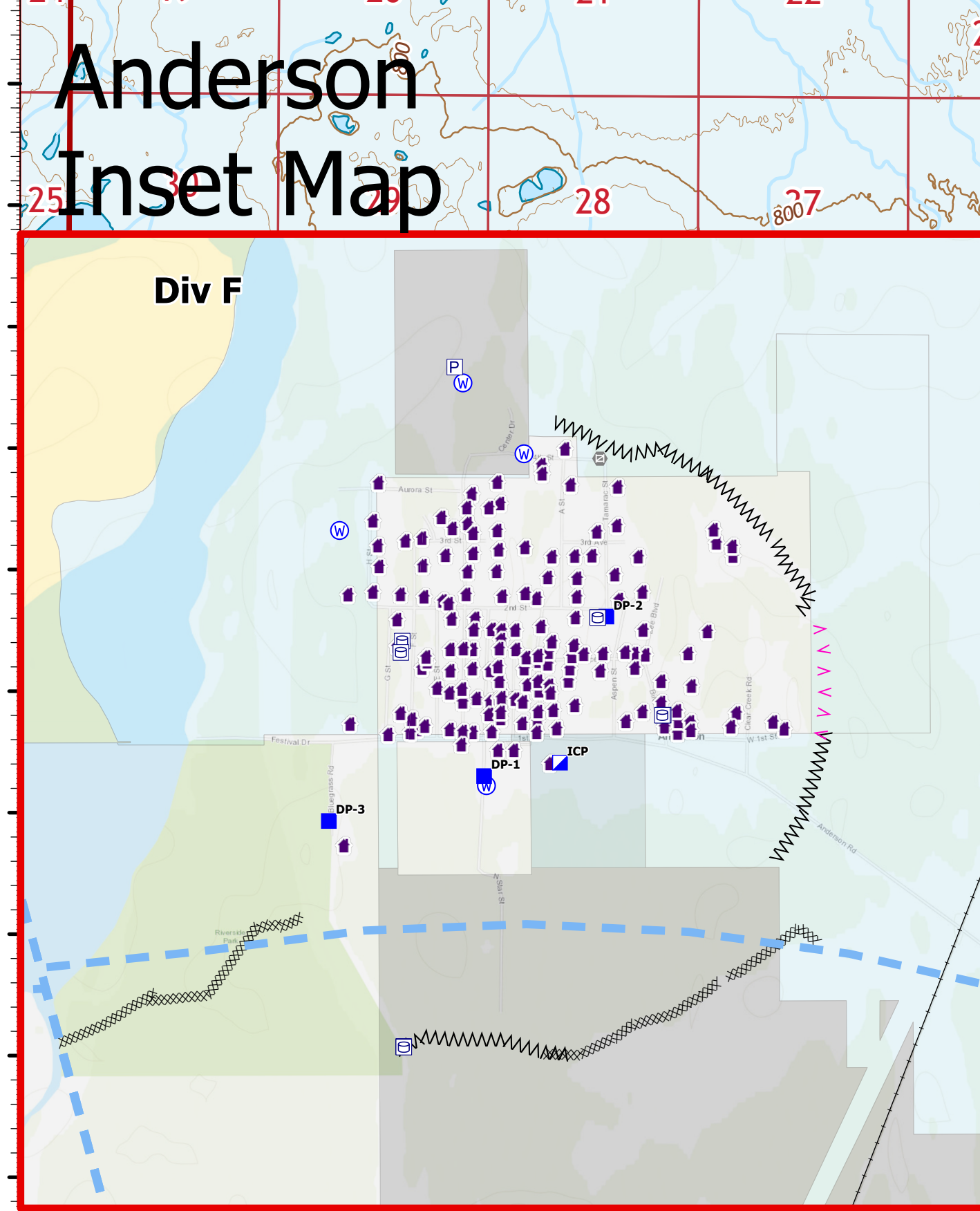
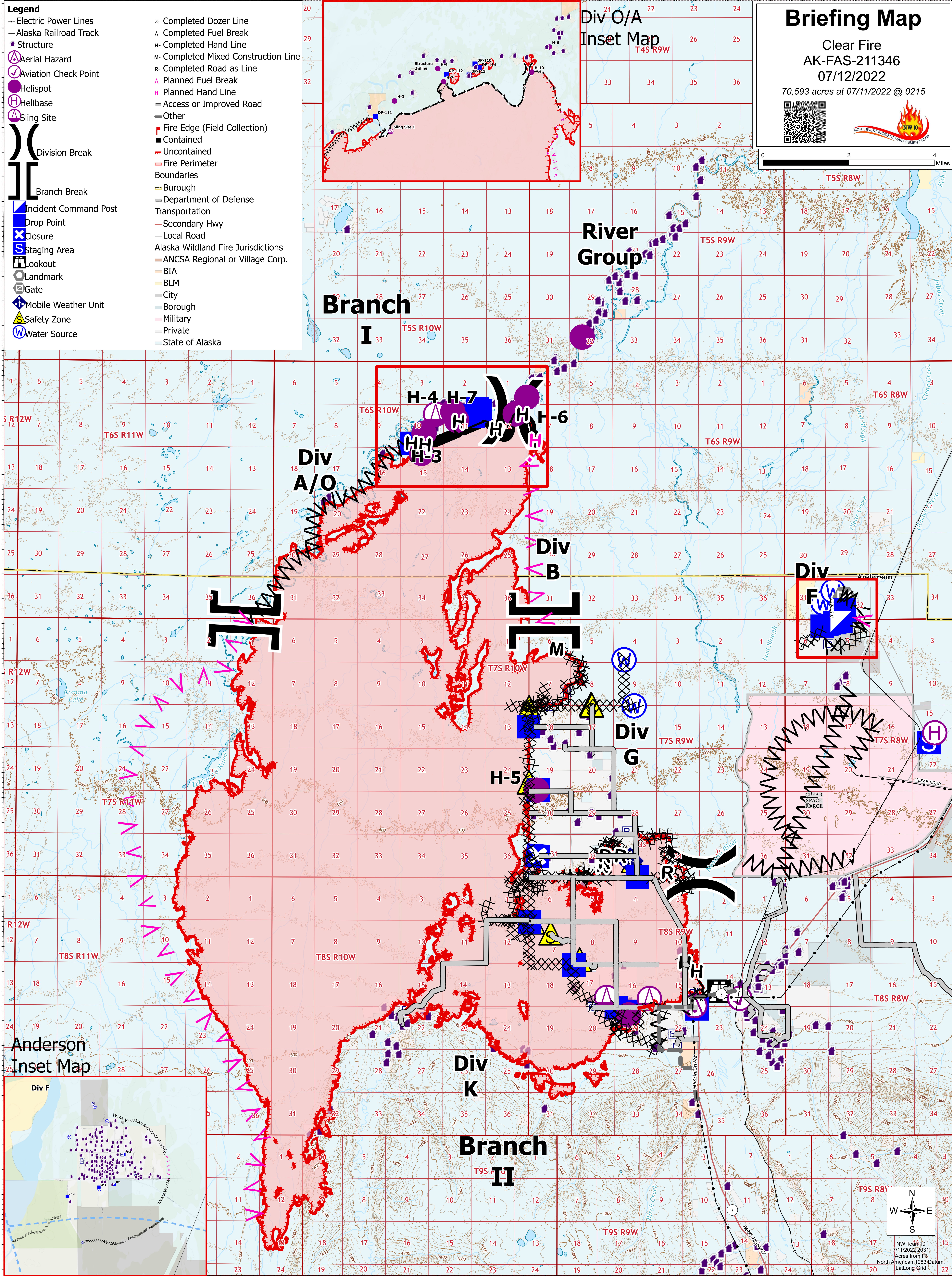
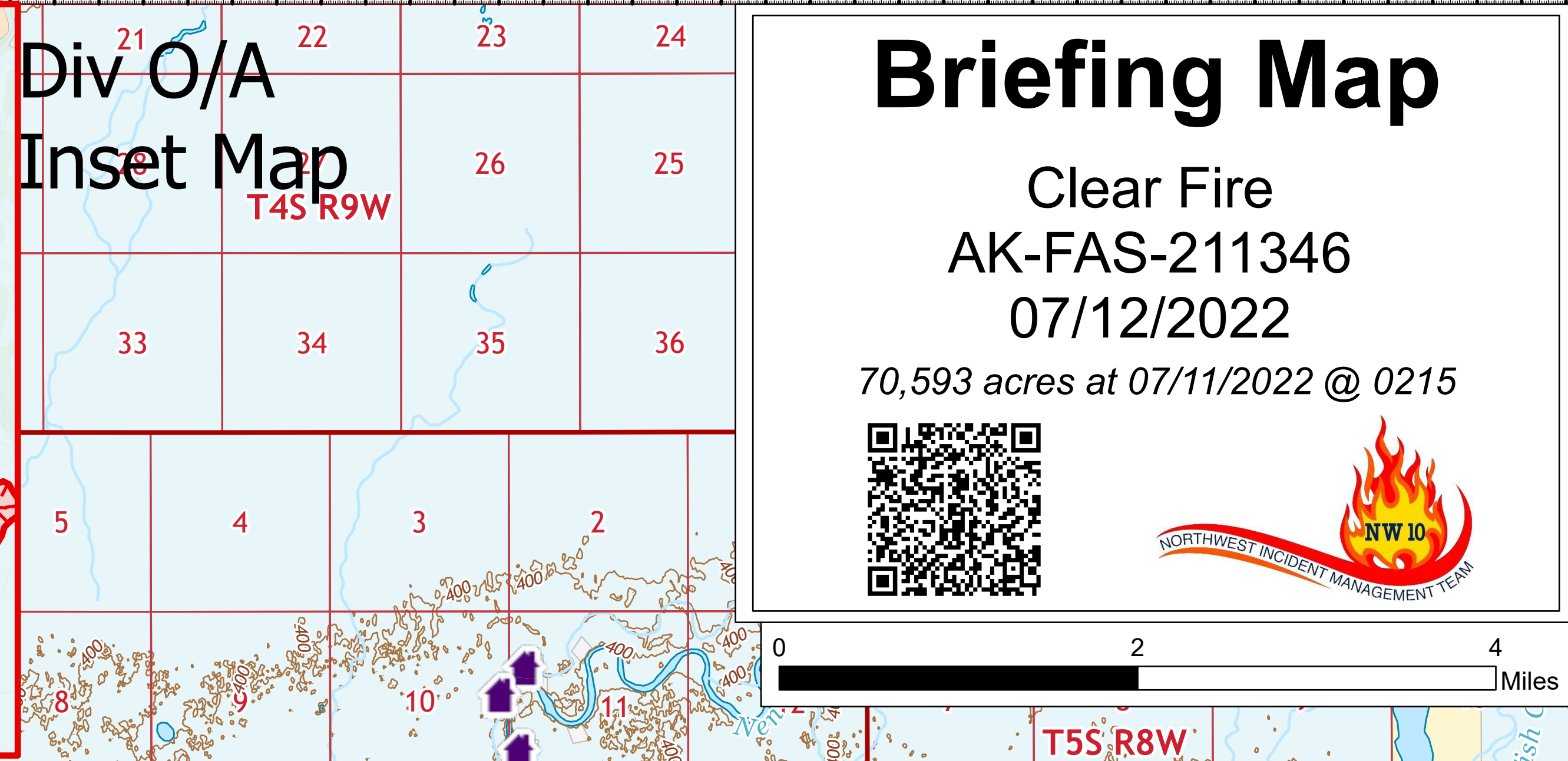
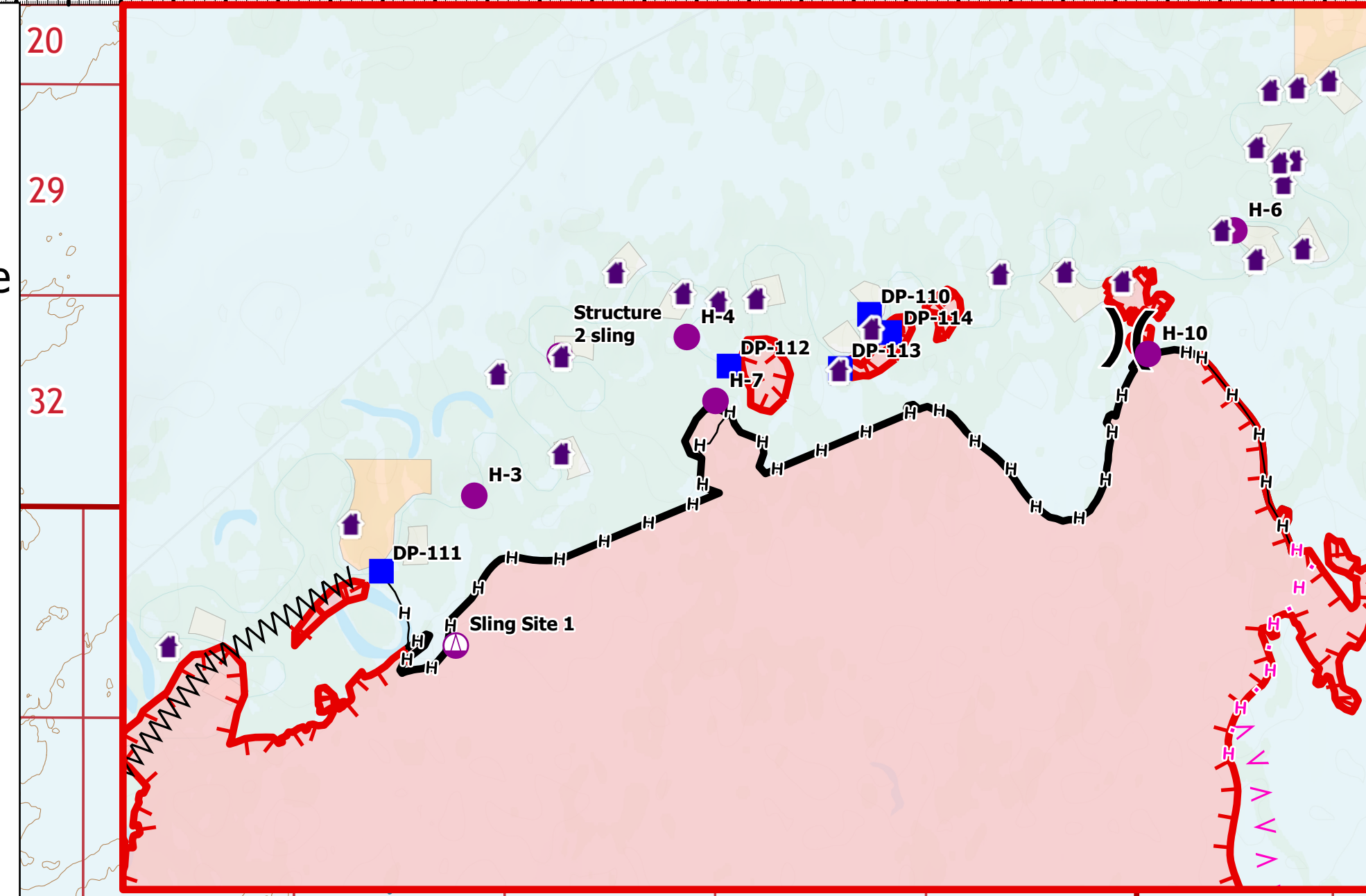
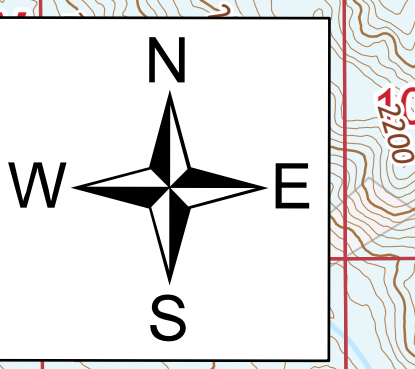


- Legend**
- Electric Power Lines
  - Alaska Railroad Track
  - Structure
  - Aerial Hazard
  - Aviation Check Point
  - Helispot
  - Helibase
  - Sling Site
  - Division Break
  - Branch Break
  - Incident Command Post
  - Drop Point
  - Closure
  - Staging Area
  - Lookout
  - Landmark
  - Gate
  - Mobile Weather Unit
  - Safety Zone
  - Water Source
  - Completed Dozer Line
  - Completed Fuel Break
  - Completed Hand Line
  - Completed Mixed Construction Line
  - Completed Road as Line
  - Planned Fuel Break
  - Planned Hand Line
  - Access or Improved Road
  - Other
  - Fire Edge (Field Collection)
  - Contained
  - Uncontained
  - Fire Perimeter
  - Boundaries
  - Borough
  - Department of Defense Transportation
  - Secondary Hwy
  - Local Road
  - Alaska Wildland Fire Jurisdictions
  - ANCSA Regional or Village Corp.
  - BIA
  - BLM
  - City
  - Borough
  - Military
  - State of Alaska

# Briefing Map

Clear Fire  
AK-FAS-211346  
07/12/2022  
70,593 acres at 07/11/2022 @ 0215



N  
W E  
S

NW Team 10  
7/11/2022 2031  
Acres from IFR  
North American 1983 Datum  
Lat/Long Gnd