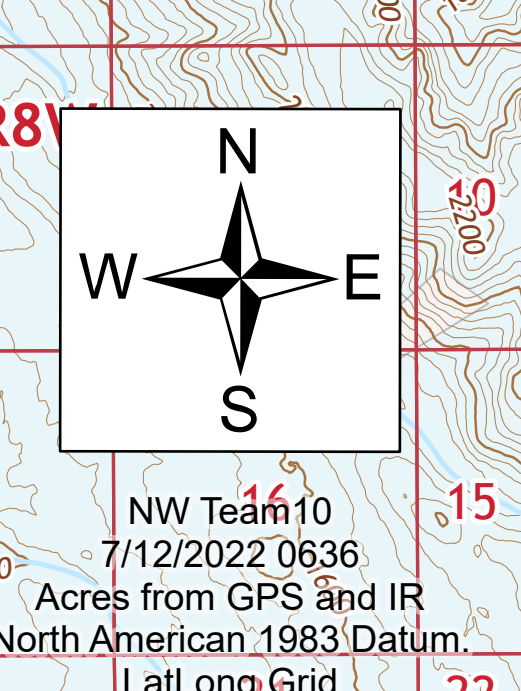
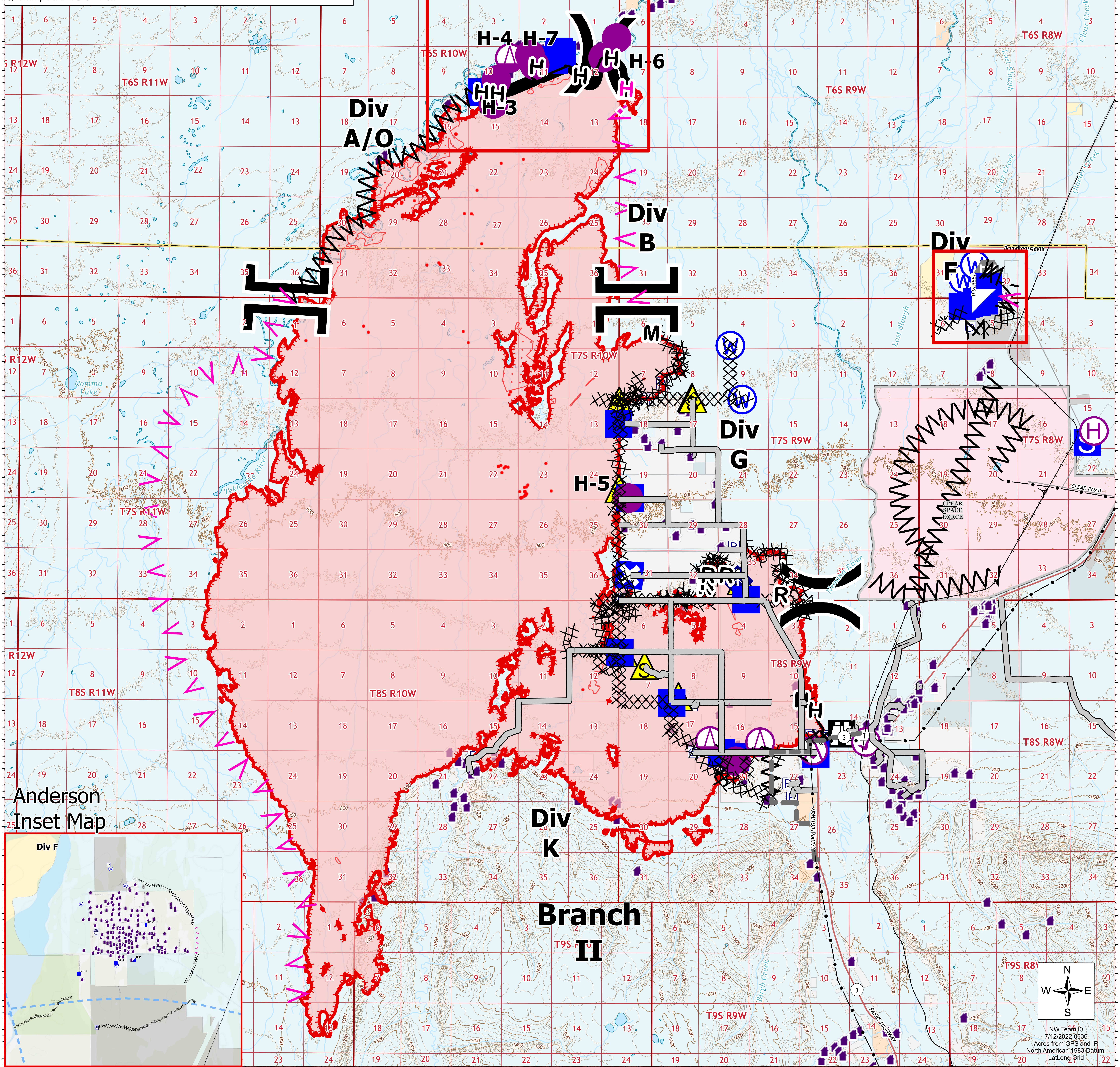
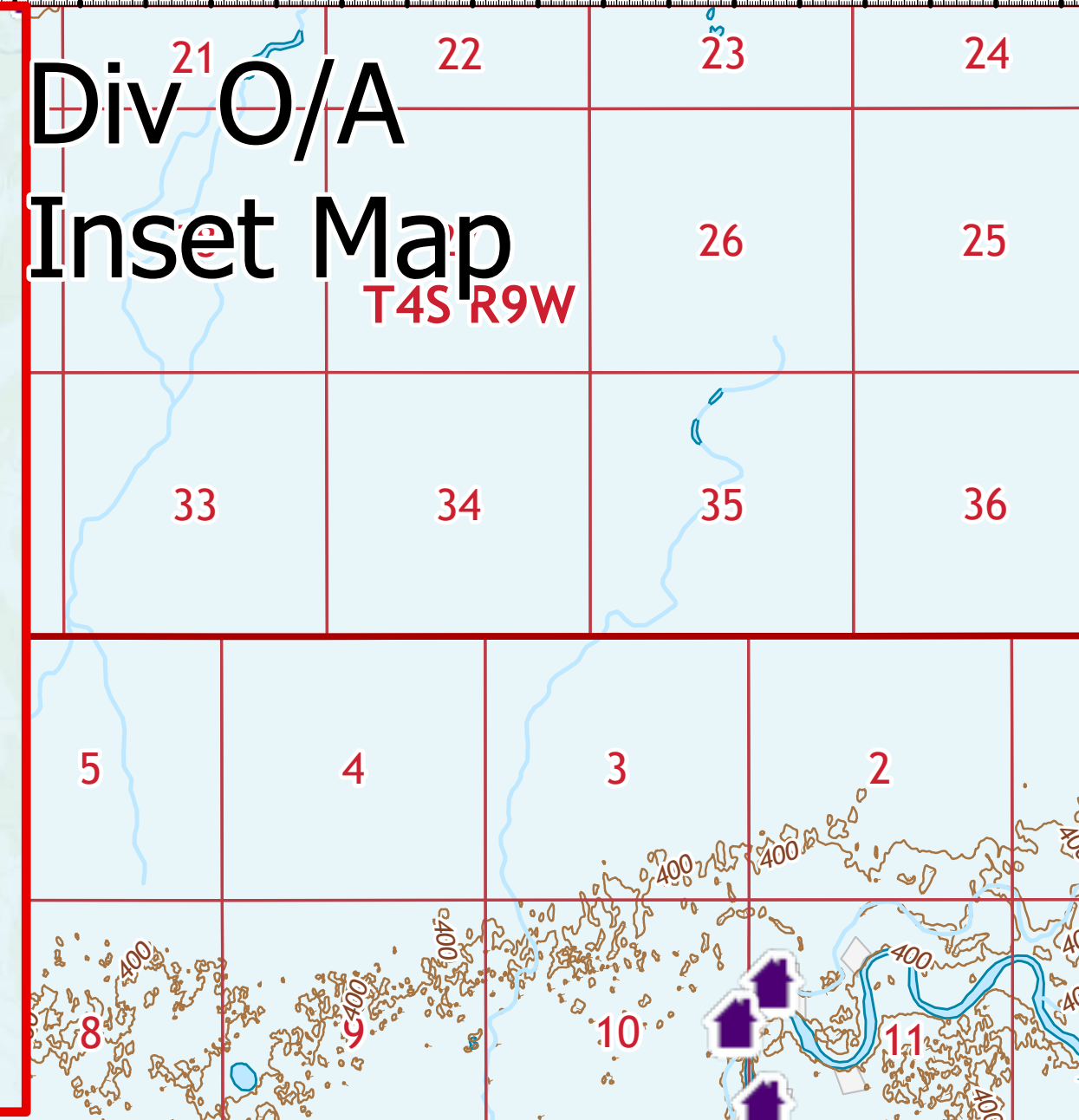
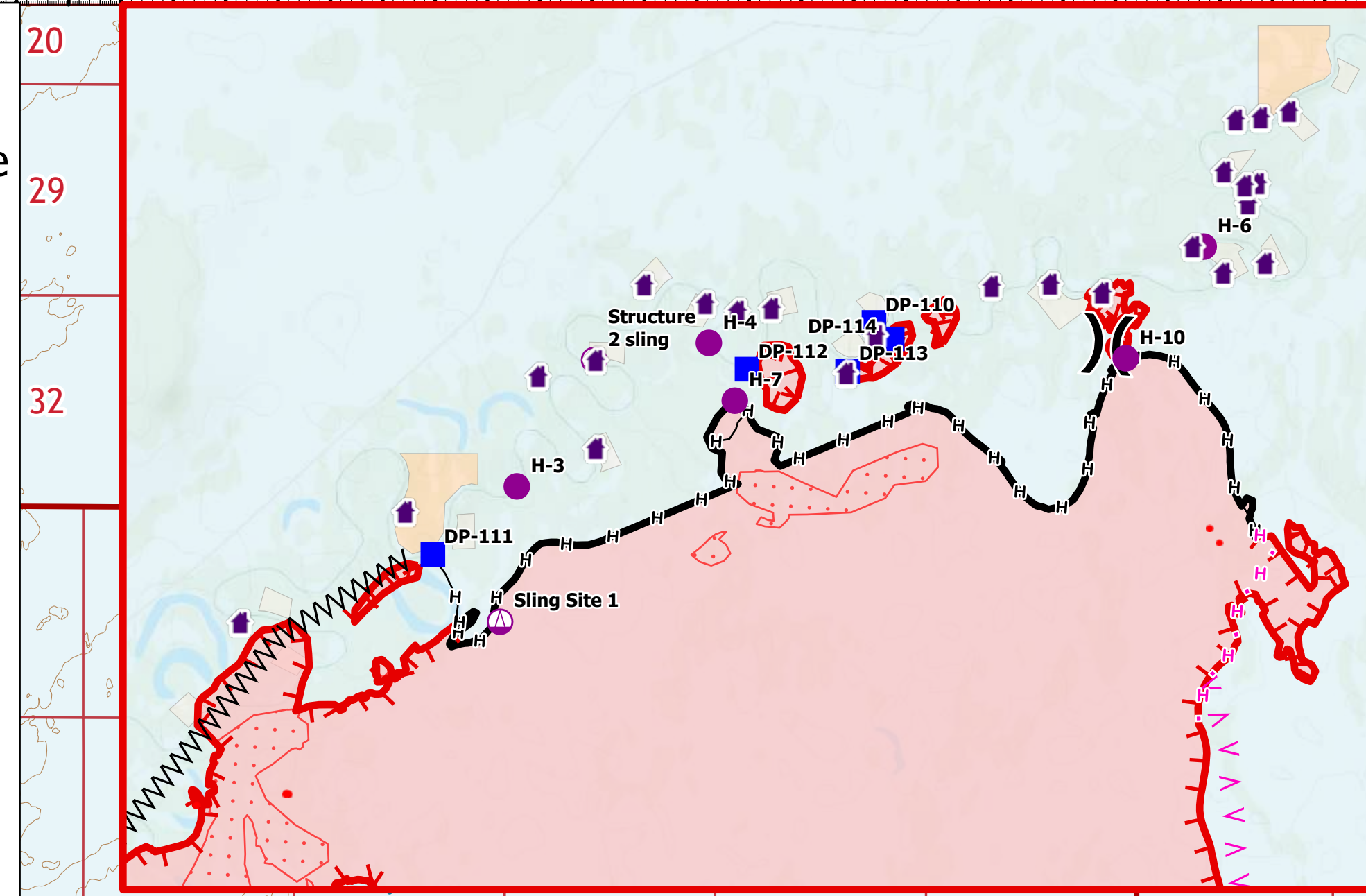


- Legend**
- Electric Power Lines
 - Alaska Railroad Track
 - Structure
 - ⊙ Aerial Hazard
 - ⊙ Aviation Check Point
 - ⊙ Helispot
 - ⊙ Helibase
 - ⊙ Sling Site
 - ⎓ Division Break
 - ⎓ Branch Break
 - ⊙ Incident Command Post
 - ⊙ Drop Point
 - ⊙ Closure
 - ⊙ Staging Area
 - ⊙ Lookout
 - ⊙ Landmark
 - ⊙ Gate
 - ⊙ Mobile Weather Unit
 - ⊙ Safety Zone
 - ⊙ Water Source
 - ⊙ Completed Dozer Line
 - ⊙ Completed Fuel Break
 - Completed Hand Line
 - Completed Mixed Construction Line
 - Completed Road as Line
 - ⊙ Planned Fuel Break
 - ⊙ Planned Hand Line
 - Access or Improved Road
 - Other
 - Contained
 - Uncontained
 - IR Isolated Heat Source
 - Fire Perimeter
 - IR Polygon
 - IR Heat Perimeter
 - IR Scattered Heat
 - Boundaries
 - Borough
 - Department of Defense Transportation
 - Secondary Hwy
 - Local Road
 - Alaska Wildland Fire Jurisdictions
 - ANCSA Regional or Village Corp.
 - BIA
 - BLM
 - City
 - Borough
 - Military
 - Private
 - State of Alaska

Briefing Map

Clear Fire
AK-FAS-211346
07/12/2022
70,613 acres at 07/12/2022 @ 0001





NW Team 10
7/12/2022 0636
Acres from GPS and IR
North American 1983 Datum
Lat/Long Gnd