

- Legend**
- Electric Power Lines
  - Alaska Railroad Track
  - Structure
  - ⊙ Aerial Hazard
  - ⊙ Aviation Check Point
  - ⊙ Helispot
  - ⊙ Helibase
  - ⊙ Sling Site
  - ⊎ Division Break
  - ⊎ Branch Break
  - ⊎ Incident Command Post
  - ⊎ Drop Point
  - ⊎ Closure
  - ⊎ Staging Area
  - ⊎ Lookout
  - ⊎ Landmark
  - ⊎ Gate
  - ⊎ Mobile Weather Unit
  - ⊎ Safety Zone
  - ⊎ Water Source
  - ⊎ Completed Dozer Line
  - ⊎ Completed Fuel Break
  - ⊎ Completed Hand Line
  - ⊎ Completed Mixed Construction Line
  - ⊎ Completed Road as Line
  - ⊎ Planned Fuel Break
  - Access or Improved Road
  - Other
  - Fire Edge (Field Collection)
  - Contained
  - Uncontained
  - IR Isolated Heat Source
  - Fire Perimeter
  - IR Polygon
  - IR Heat Perimeter
  - IR Scattered Heat
  - Boundaries
  - Borough
  - Department of Defense Transportation
  - Secondary Hwy
  - Local Road
  - Alaska Wildland Fire Jurisdictions
  - ANCSA Regional or Village Corp.
  - BIA
  - BLM
  - City
  - Borough
  - Military
  - Private
  - State of Alaska

# Briefing Map

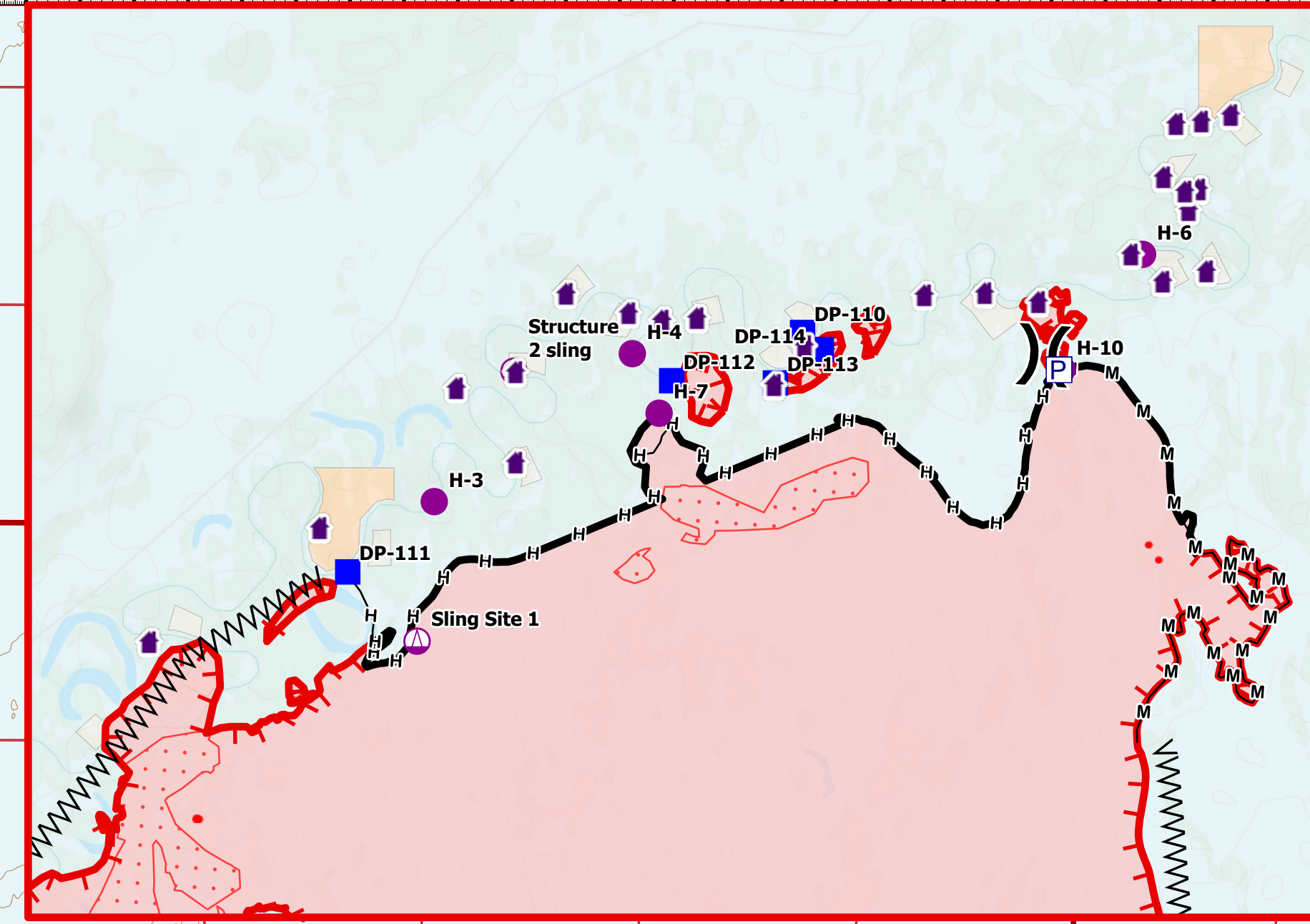
Clear Fire  
AK-FAS-211346  
07/13/2022  
70,613 acres at 07/12/2022 @ 0001



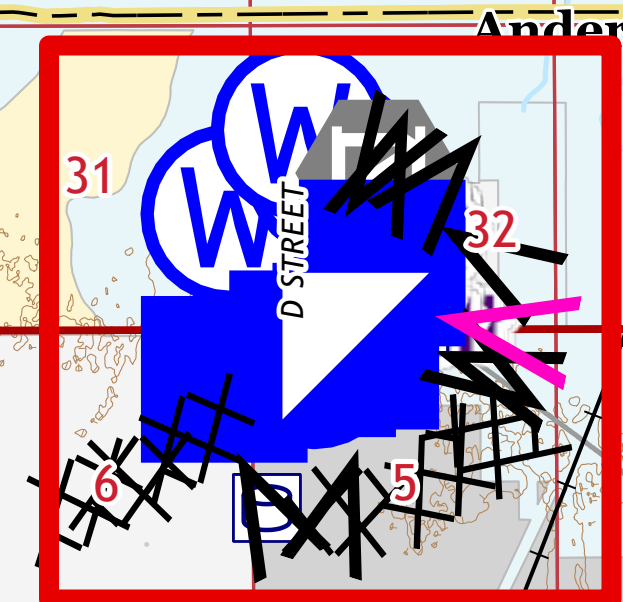

**Div O/A Inset Map**  
T4S R9W



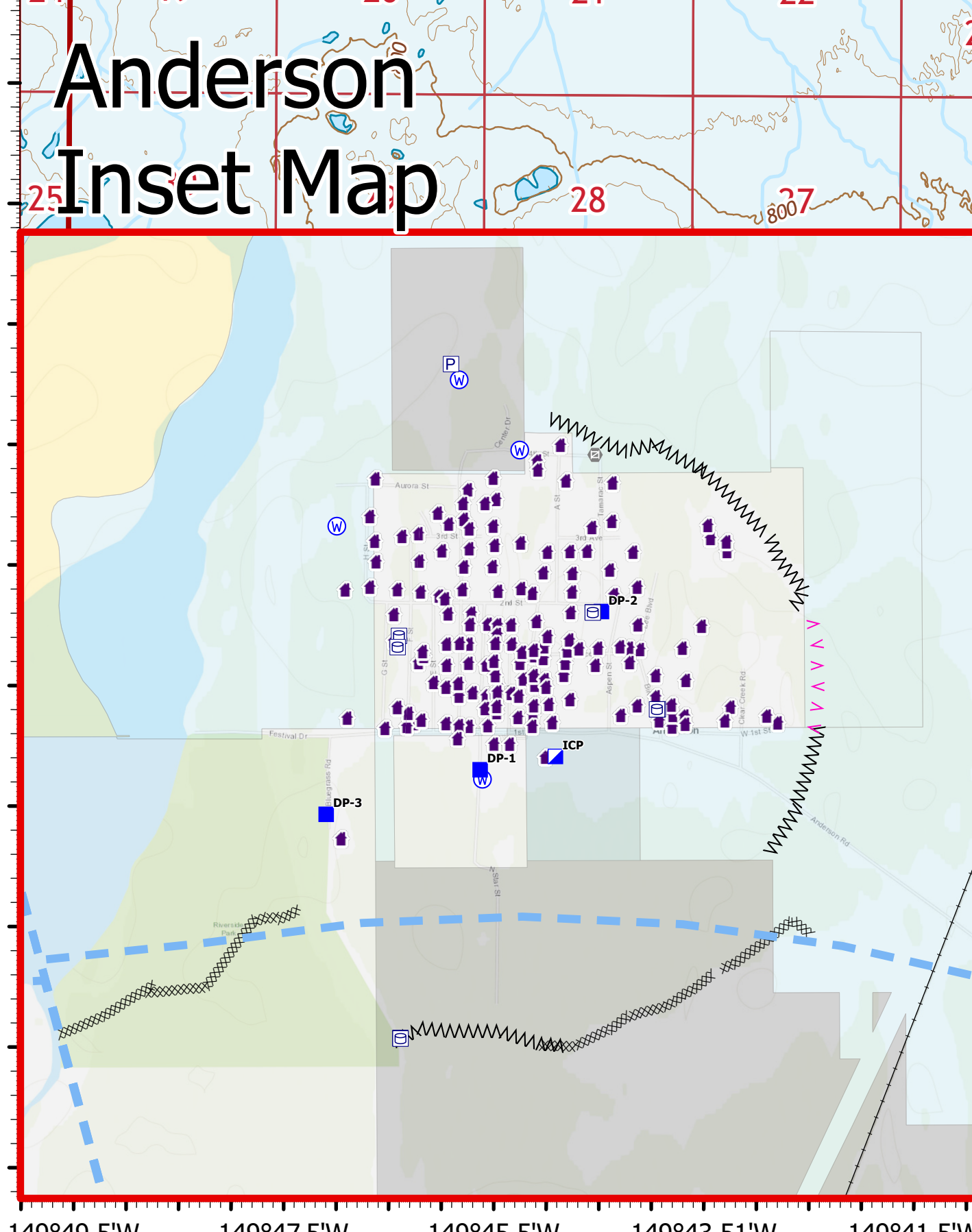
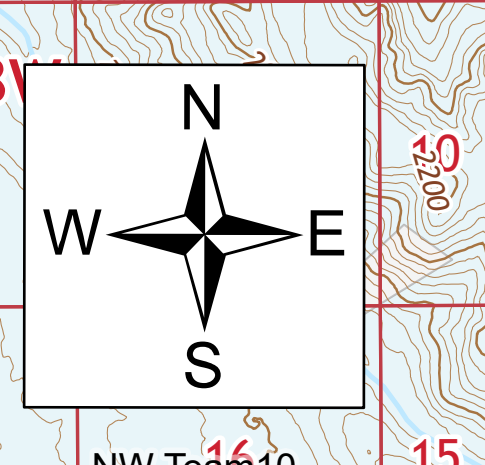
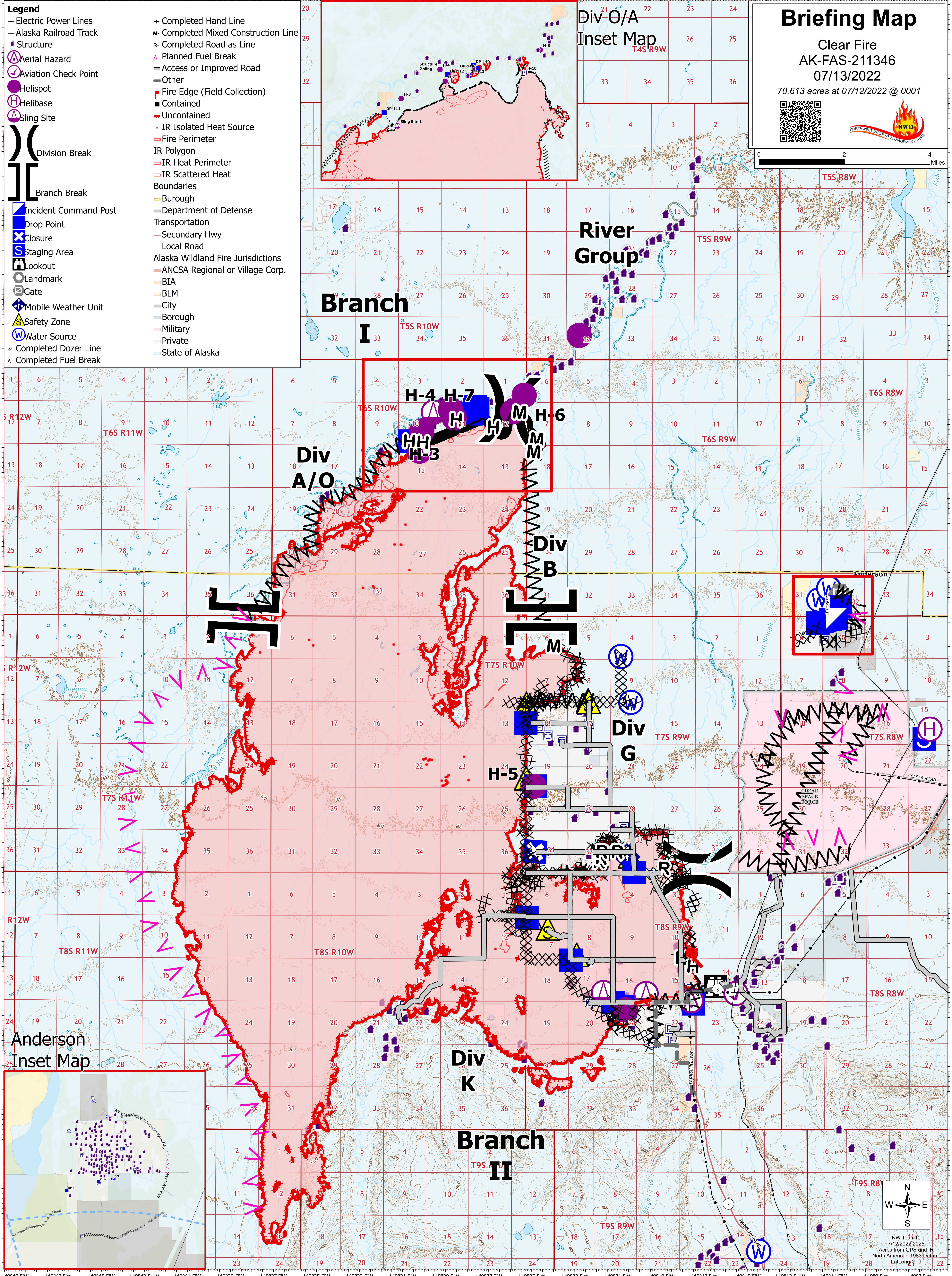
**Branch I**  
T5S R10W



**Anderson Inset Map**



**Anderson Inset Map**

NW Team 10  
7/12/2022 2025  
Acres from GPS and IR  
North American 1983 Datum  
Lat/Long Gnd