

149°45'W

149°40'W

149°35'W

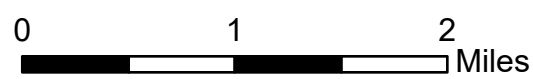
149°30'W

149°25'W

149°20'W

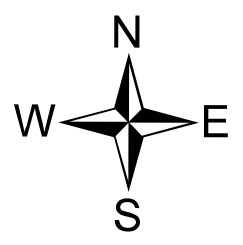
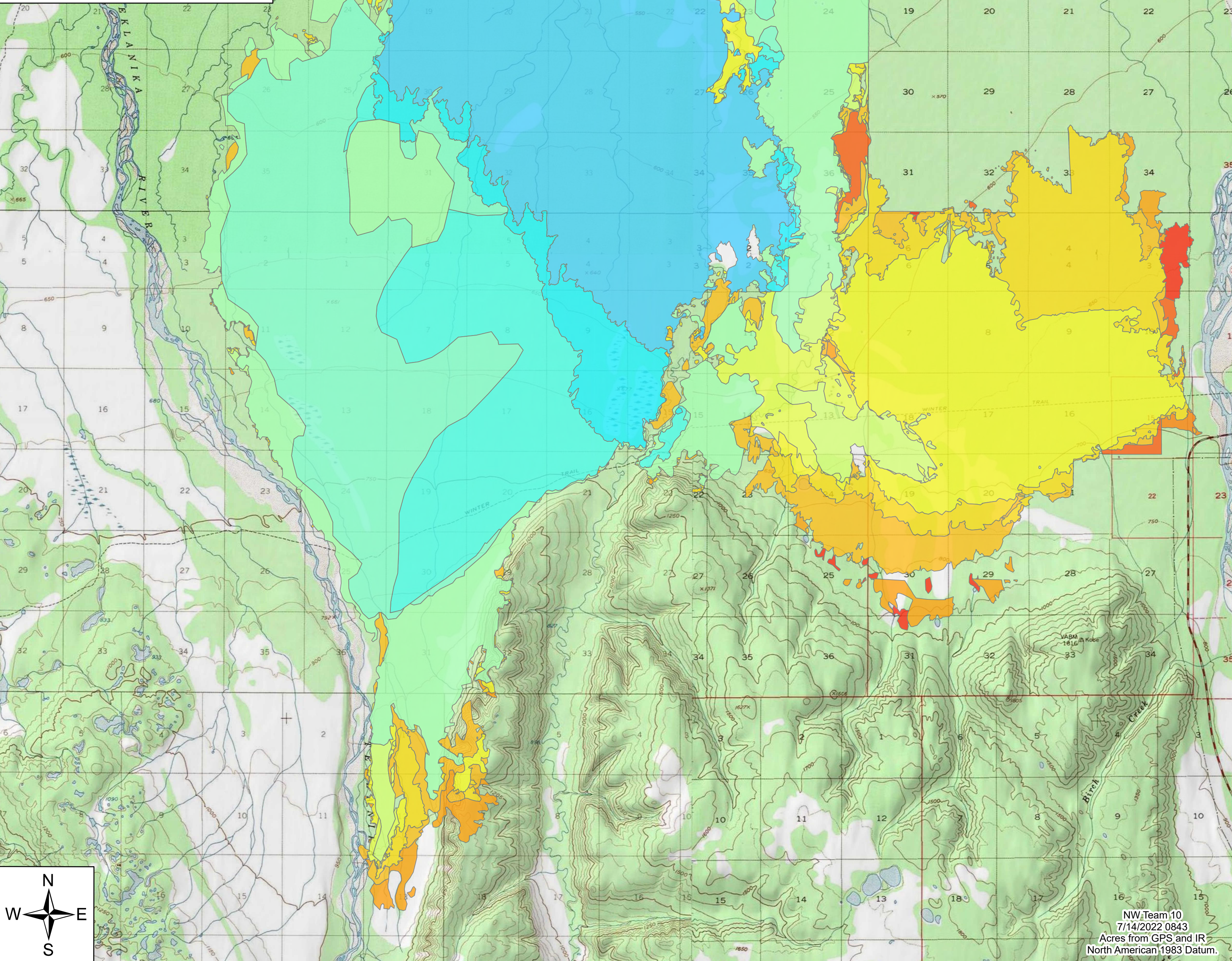
Progression Map

Clear Fire
AK-FAS-211346
07/14/2022



Progression Legend

20220623 @ 1600	1,843ac.	+1,843ac.
20220624 @ 1920	2,908ac.	+1,064ac.
20220625 @ 1600	4,186ac.	+1,278ac.
20220625 @ 2300	4,902ac.	+715ac.
20220626 @ 1500	9,555ac.	+4,652ac.
20220629 @ 0001	23,511ac.	+13,956ac.
20220630 @ 0030	25,792ac.	+2,280ac.
20220630 @ 2230	30,550ac.	+4,757ac.
20220701 @ 1238	39,872ac.	+9,322ac.
20220703 @ 0030	51,224ac.	+11,352ac.
20220704 @ 0200	51,351ac.	+126ac.
20220705 @ 0230	52,972ac.	+1,620ac.
20220705 @ 2330	55,577ac.	+2,605ac.
20220707 @ 0045	61,967ac.	+6,389ac.
20220708 @ 0030	65,850ac.	+3,882ac.
20220709 @ 0115	69,578ac.	+3,728ac.
20220711 @ 0215	70,556ac.	+977ac.
20220712 @ 0001	70,600ac.	+44ac.
20220713 @ 0030	70,896ac.	+295ac.
20220713 @ 2130	71,112ac.	+216ac.



NW Team 10
7/14/2022 0843
Acres from GPS and IR
North American 1983 Datum.

149°45'W

149°40'W

149°35'W

149°30'W

149°25'W

149°20'W

64°25'N

64°20'N

64°15'N

64°10'N

64°25'N

64°20'N

64°15'N

64°10'N