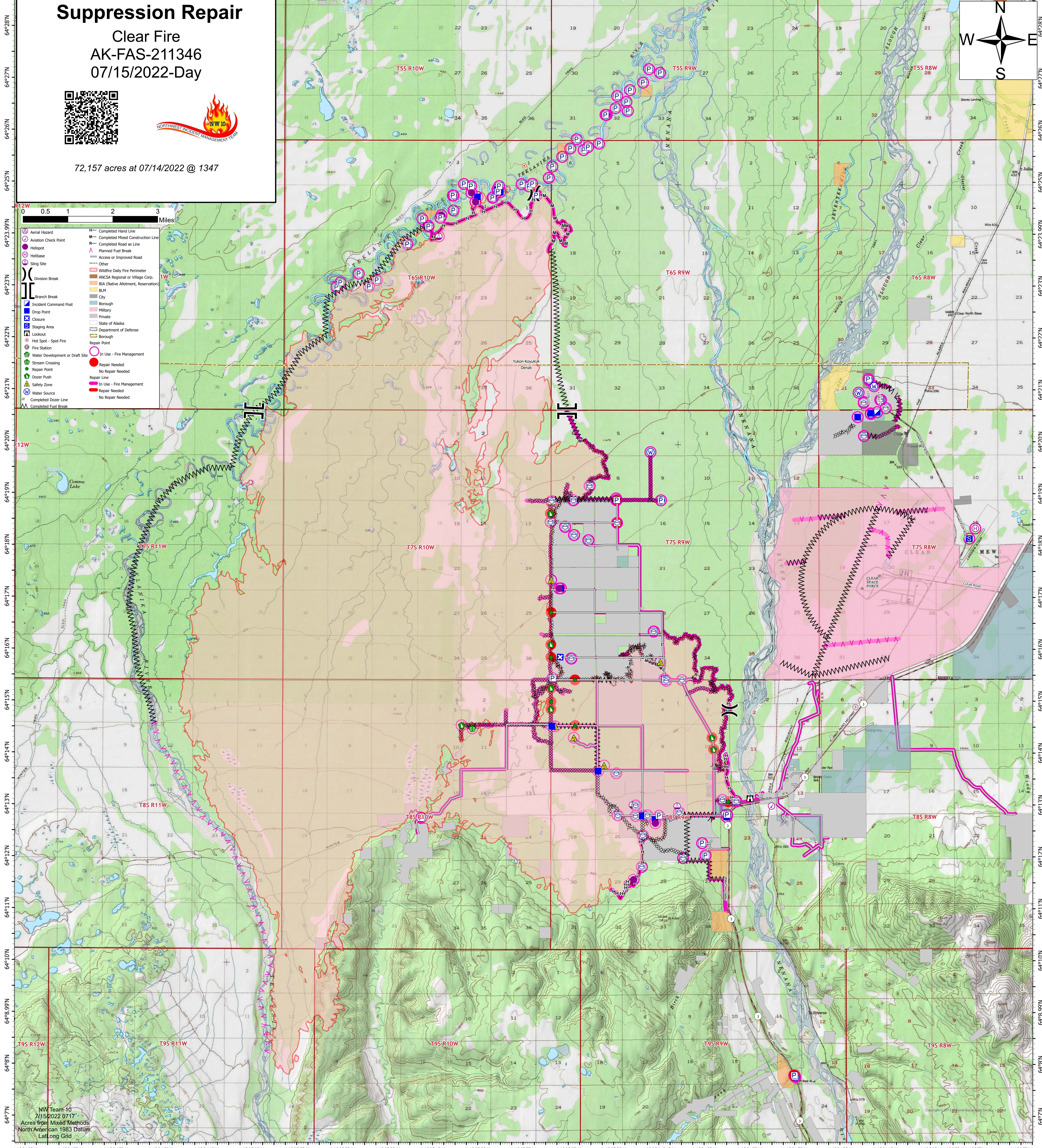
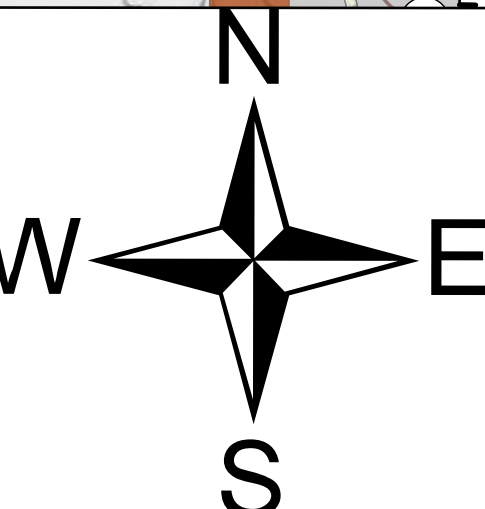


# Suppression Repair

Clear Fire  
AK-FAS-211346  
07/15/2022-Day



72,157 acres at 07/14/2022 @ 1347



0 0.5 1 2 3 Miles

- Aerial Hazard
- Aviation Check Point
- Helibase
- Helispot
- Slingsite
- Division Break
- Branch Break
- Incident Command Post
- Drop Point
- Closure
- Staging Area
- Lookout
- Hot Spot - Spot Fire
- Fire Station
- Water Development or Draft Site
- Stream Crossing
- Repair Point
- Dozer Push
- Safety Zone
- Water Source
- Completed Dozer Line
- Completed Fuel Break

- Completed Road Line
- Completed Mixed Construction Line
- Planned Fuel Break
- Access or Improved Road
- Other
- Weather Daily Fire Perimeter
- ANCSA Reserved or Other Corp.
- BIA (Native Allotment, Reservation)
- BLM
- City
- Borough
- Military
- Private
- State of Alaska
- Department of Defense
- Borough
- In Use - Fire Management
- Repair Needed
- No Repair Needed
- In Use - Fire Management
- Repair Needed
- No Repair Needed

FC Point Type	Label	Repair Status	Latitude WGS84 DDM	Longitude WGS84 DDM	Comments
Staging Area	Structure 2 sling	In Use - Fire Management	64° 18.137' N	149° 07.184' W	Clear Helibase is staging
Helibase		In Use - Fire Management	64° 24.760' N	149° 30.156' W	
Helispot	H-3	In Use - Fire Management	64° 24.378' N	149° 30.695' W	
Drop Point	DP-3	In Use - Fire Management	64° 20.487' N	149° 12.136' W	Anderson Campground
Drop Point	DP-1	In Use - Fire Management	64° 20.559' N	149° 11.555' W	Anderson VFD
Drop Point	DP-2	In Use - Fire Management	64° 20.817' N	149° 11.095' W	Old Baseball Field
Drop Point	DP-4	In Use - Fire Management	64° 12.765' N	149° 22.984' W	Intersection of Kibbe Rd and Parks Hwy
Safety Zone	Safety Zone 1	In Use - Fire Management	64° 18.925' N	149° 22.894' W	Improved safety zone.
Safety Zone	Alnstrip	In Use - Fire Management	64° 15.770' N	149° 20.930' W	Overgrown, however easily defensible space
Incident Command Post	ICP	In Use - Fire Management	64° 20.580' N	149° 11.270' W	
Helispot	H-6	In Use - Fire Management	64° 25.105' N	149° 25.898' W	Notify ground resource 10 min before use.
Safety Zone	Safety Zone 2	In Use - Fire Management	64° 18.857' N	149° 25.775' W	Improved safety zone
Safety Zone	Safety Zone 3	In Use - Fire Management	64° 12.351' N	149° 25.780' W	Turnip farm
Water Source		In Use - Fire Management	64° 20.957' N	149° 12.093' W	Outpost pond; Landowner stated this pond could be a potential pump site.
Safety Zone		Repair Needed	64° 12.825' N	149° 21.699' W	private property, but looks good for a safety zone in an emergency.
Safety Zone		In Use - Fire Management	64° 14.311' N	149° 24.770' W	
Drop Point	DP-71	In Use - Fire Management	64° 15.444' N	149° 20.746' W	
Drop Point	DP-110	In Use - Fire Management	64° 24.875' N	149° 28.202' W	
Water Source		In Use - Fire Management	64° 18.888' N	149° 20.896' W	
Drop Point	DP-72	In Use - Fire Management	64° 17.191' N	149° 25.349' W	Approved for Type 1, 2, 3
Water Source		In Use - Fire Management	64° 19.816' N	149° 21.365' W	
Water Source		In Use - Fire Management	64° 21.081' N	149° 11.402' W	Stream crossing, Draft site
Water Source		In Use - Fire Management	64° 21.195' N	149° 11.630' W	
Water Source		In Use - Fire Management	64° 20.543' N	149° 11.546' W	
Dozer Push		Repair Needed	64° 15.267' N	149° 25.786' W	Small dozer parking area
Safety Zone		In Use - Fire Management	64° 12.776' N	149° 24.424' W	
Helispot	H-5	In Use - Fire Management	64° 17.189' N	149° 25.420' W	
Drop Point	DP-112	In Use - Fire Management	64° 24.733' N	149° 29.088' W	
Drop Point	DP-113	In Use - Fire Management	64° 24.727' N	149° 28.385' W	
Drop Point	DP-111	In Use - Fire Management	64° 24.172' N	149° 31.280' W	
Repeater	CMD 1	In Use - Fire Management	64° 34.519' N	149° 05.116' W	
Helispot	H-7	In Use - Fire Management	64° 24.638' N	149° 29.173' W	Type 3 Only

FC Point Type	Label	Repair Status	Latitude WGS84 DDM	Longitude WGS84 DDM	Comments
Safety Zone		In Use - Fire Management	64° 14.532' N	149° 25.595' W	
Drop Point	DP-73	In Use - Fire Management	64° 14.535' N	149° 25.746' W	
Drop Point	DP-74	In Use - Fire Management	64° 13.669' N	149° 23.691' W	
Drop Point	DP-75	In Use - Fire Management	64° 12.809' N	149° 21.724' W	
Repair Point		Repair Needed	64° 18.455' N	149° 22.859' W	A geological survey marker got damaged.
Repair Point		Repair Needed	64° 15.008' N	149° 25.784' W	Monument witness carbonate post got burned and dozed in a berm. Unable to locate associate monument. READ-SEH
Helispot	H-4	In Use - Fire Management	64° 24.812' N	149° 29.355' W	Approved
Drop Point	DP-70	In Use - Fire Management	64° 18.469' N	149° 25.806' W	
Helispot	H-10	In Use - Fire Management	64° 24.768' N	149° 26.442' W	Type 3 Only
Slingsite	Slingsite 1	In Use - Fire Management	64° 23.970' N	149° 30.809' W	
Repeater	CMD 2	In Use - Fire Management	64° 07.780' N	148° 54.112' W	Approved Type 2 Helispot
Drop Point	DP-114	In Use - Fire Management	64° 24.825' N	149° 28.074' W	
Landmark	Boat Launch	In Use - Fire Management	64° 33.389' N	149° 06.831' W	
Helispot	H-12	In Use - Fire Management	64° 12.664' N	149° 21.146' W	
Repeater	Outpost pond	In Use - Fire Management	64° 35.287' N	149° 04.570' W	Type 3 Only
Drop Point	DP-76	In Use - Fire Management	64° 12.735' N	149° 21.165' W	Drop point 76, Bible camp
Safety Zone		Repair Needed	64° 18.901' N	149° 22.864' W	
Helispot	H-11	In Use - Fire Management	64° 26.317' N	149° 23.317' W	
Water Development or Draft Site		In Use - Fire Management	64° 07.807' N	149° 15.016' W	June Creek pump site anadromous spawning stream. 7/11 added containment. READ-SEB
Dozer Push		Repair Needed	64° 24.089' N	149° 18.567' W	6 blades wide READ-SEH
Water Source		In Use - Fire Management	64° 07.772' N	149° 14.965' W	1 acre dozer push
Dozer Push		Repair Needed	64° 14.864' N	149° 25.787' W	Small turnaround area READ-SEH
Dozer Push		Repair Needed	64° 14.315' N	149° 18.639' W	Large parking area
Dozer Push		Repair Needed	64° 13.079' N	149° 17.927' W	Steep hill on dozer line
Repair Point		Repair Needed	64° 16.726' N	149° 25.783' W	Report of a damaged survey monument - aluminum (Duncan). Unconfirmed by site visit 7/14/22 READ-SEH
Stream Crossing		In Use - Fire Management	64° 14.491' N	149° 29.272' W	Report from FCBIS of dozer line through stream
Dozer Push		In Use - Fire Management	64° 14.511' N	149° 29.752' W	1 acre dozer push
Helispot	H-13	In Use - Fire Management	64° 11.578' N	149° 22.115' W	Medevac only. Approved for Type 2 and 3. Not for repeated use.
Dozer Push		Repair Needed	64° 18.634' N	149° 25.819' W	Four blades wide READ-SEH
Repair Point		Repair Needed	64° 15.427' N	149° 24.720' W	Burnt survey witness carbonate post, couldn't locate associated monument READ-SEH
Dozer Push		Repair Needed	64° 16.108' N	149° 25.796' W	4 blades READ-SEH
Repair Point		Repair Needed	64° 14.547' N	149° 24.712' W	Survey monument post run over in road/dozer line, witness stake burned, no cap READ-SEH
Repair Point		Repair Needed	64° 15.862' N	149° 25.789' W	Survey monument loose but intact and in place READ-SEH