

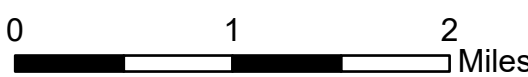
# Ops Map

Clear Fire

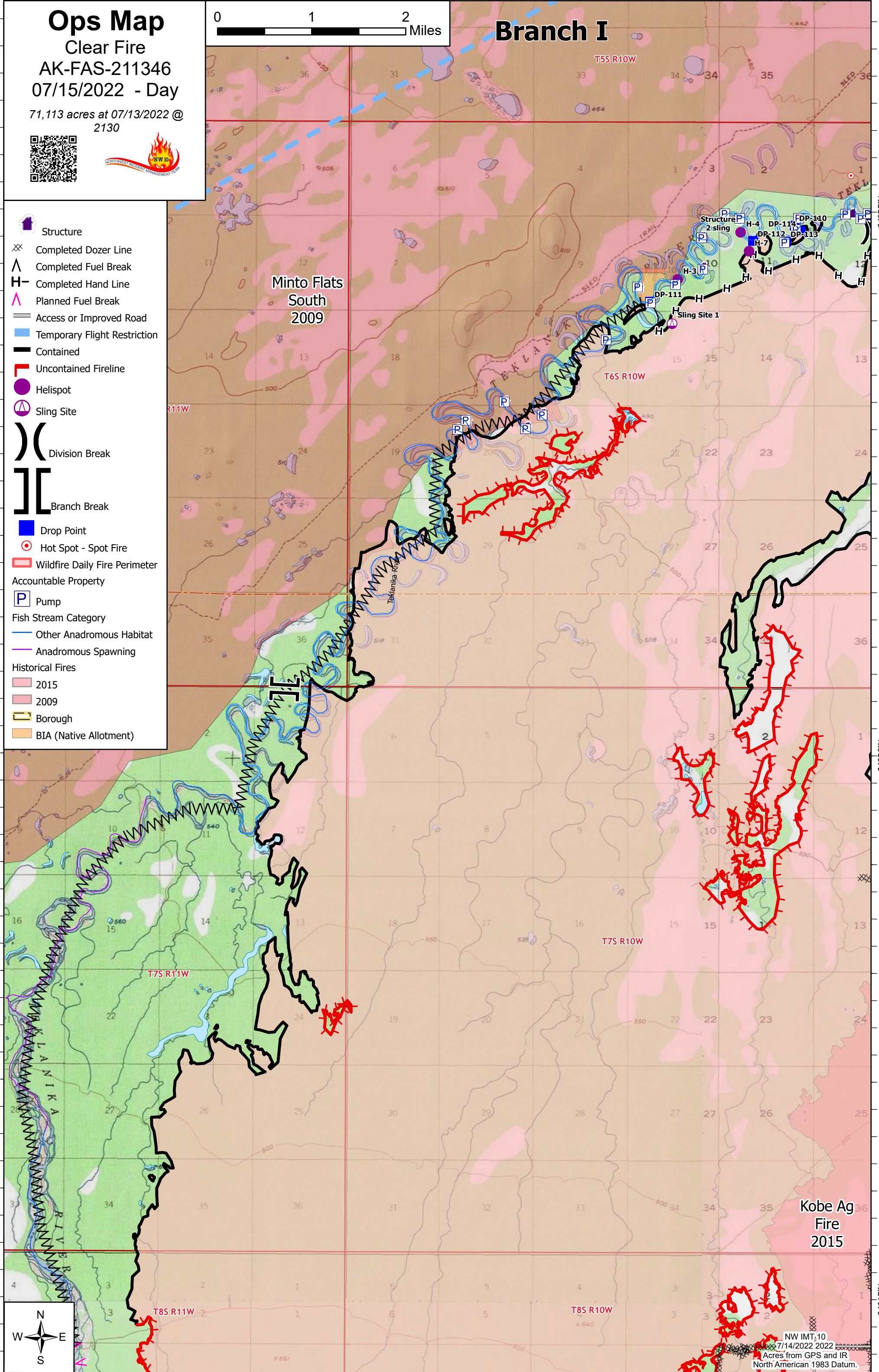
AK-FAS-211346

07/15/2022 - Day

71,113 acres at 07/13/2022 @ 2130



## Branch I



Minto Flats  
South  
2009

Kobe Ag  
Fire  
2015

- Structure
- XX Completed Dozer Line
- ^ Completed Fuel Break
- H Completed Hand Line
- ^ Planned Fuel Break
- Access or Improved Road
- Temporary Flight Restriction
- Contained
- Uncontained Fireline
- Helispot
- Sling Site
- Division Break
- Branch Break
- Drop Point
- Hot Spot - Spot Fire
- Wildfire Daily Fire Perimeter
- Accountable Property
- Pump
- Fish Stream Category
- Other Anadromous Habitat
- Anadromous Spawning
- Historical Fires
- 2015
- 2009
- Borough
- BIA (Native Allotment)



NW IMT\_10  
7/14/2022 2022  
Acres from GPS and IR  
North American 1983 Datum.