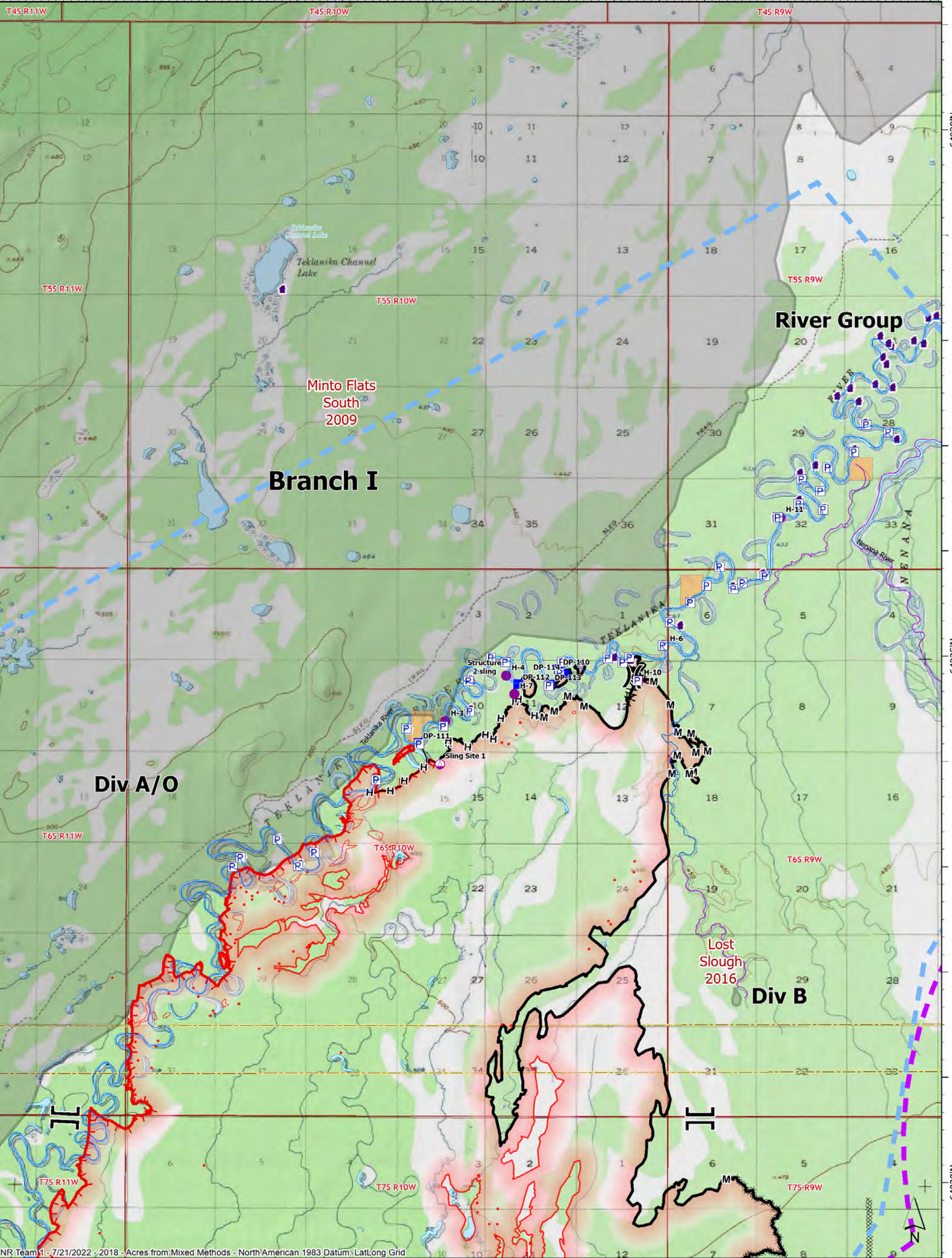


149°40'W 149°35'W 149°30'W 149°25'W 149°20'W



NR Team 1 - 7/21/2022 - 2018 - Acres from Mixed Methods - North American 1983 Datum, Lat/Long Grid

OPERATIONS Branch I

72,171 acres on 07/20/2022 @ 2345



0 0.5 1 2 Miles

- Pump
- Helispot
- Sling Site
- Division Break
- Branch Break
- Drop Point

- Completed Dozer Line
- Completed Fuel Break
- Completed Hand Line
- Completed Mixed Construction Line
- Temporary Flight Restriction
- Military Restricted Airspace

- Wildfire Daily Fire Perimeter
- IR Isolated Heat Source
- IR Heat Perimeter
- IR Scattered Heat
- Other Anadromous Habitat
- Anadromous Spawning

- Contained
- Uncontained Fireline
- Structure
- Historical Fires
- BIA (Native Allotment)
- Borough