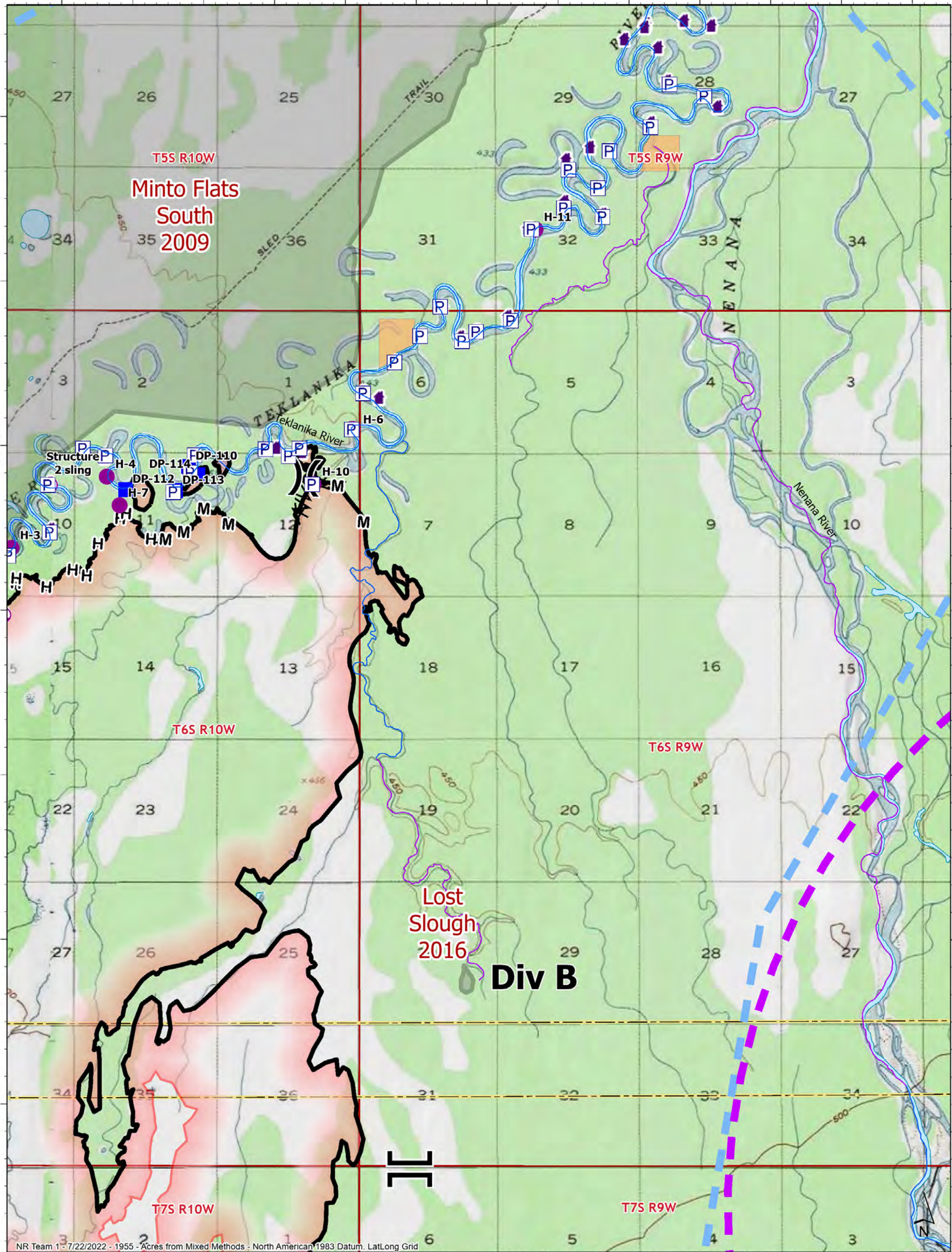


149°30'W

149°25'W

149°20'W



OPERATIONS

Div B

72,171 acres on 07/20/2022 @ 2345



Miles 0 0.5 1

- | | | |
|----------------------|-----------------------------------|--------------------------|
| Pump | Completed Fuel Break | Other Anadromous Habitat |
| Helispot | Completed Hand Line | Anadromous Spawning |
| Sling Site | Completed Mixed Construction Line | Contained |
| Division Break | Temporary Flight Restriction | Structure |
| Branch Break | Military Restricted Airspace | Historical Fires |
| Drop Point | Wildfire Daily Fire Perimeter | BIA (Native Allotment) |
| Completed Dozer Line | Borough | |

NR Team 1 - 7/22/2022 - 1955 - Acres from Mixed Methods - North American 1983 Datum. Lat/Long Grid