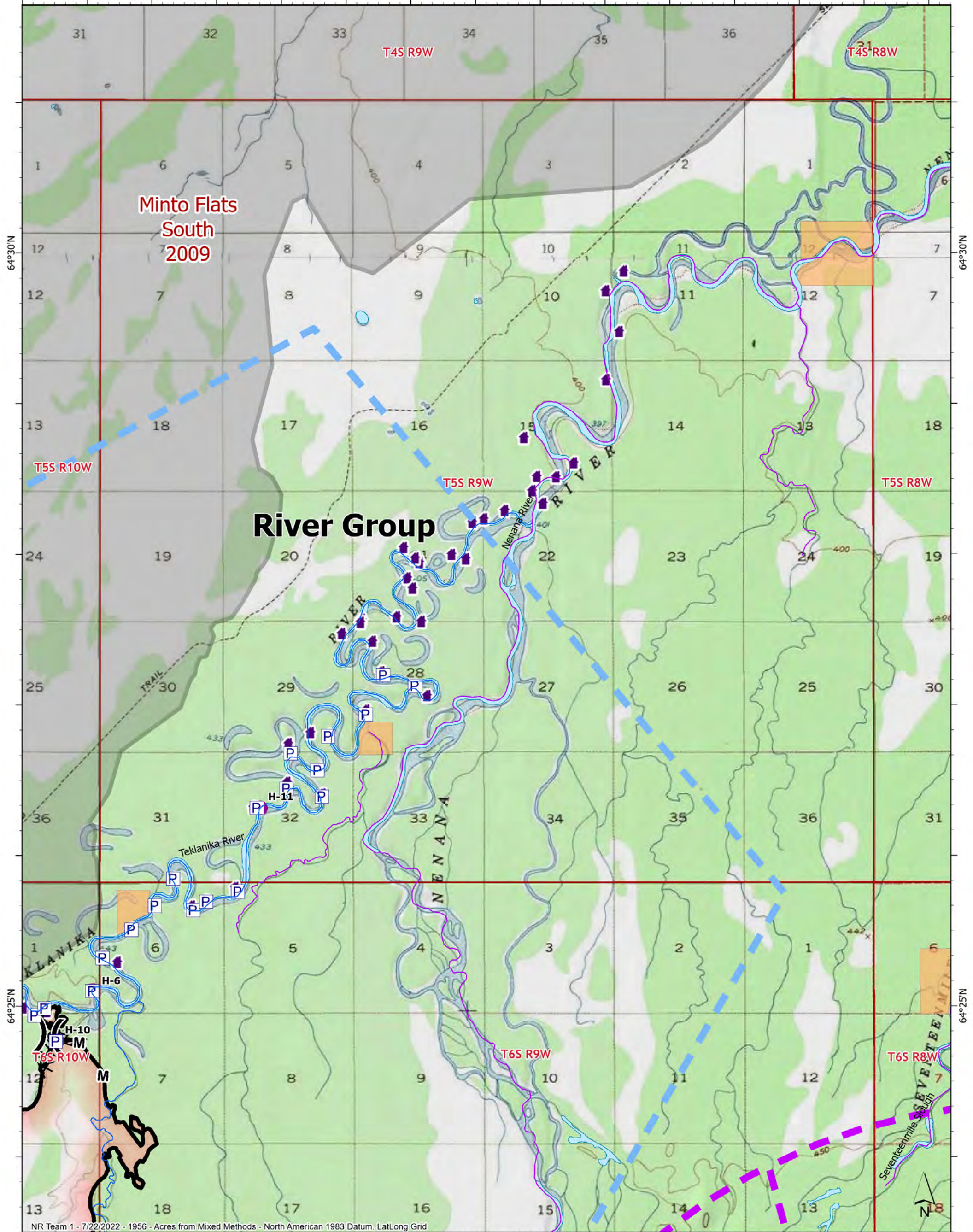


149°25'W

149°20'W

149°15'W



149°25'W

149°20'W

149°15'W

**OPERATIONS River Group**

72,171 acres on 07/20/2022 @ 2345



Miles 0 0.5 1

- |                                   |                               |                        |
|-----------------------------------|-------------------------------|------------------------|
| <b>P</b> Pump                     | Temporary Flight Restriction  | Contained              |
| Helispot                          | Military Restricted Airspace  | Structure              |
| Division Break                    | Wildfire Daily Fire Perimeter | Historical Fires       |
| Completed Fuel Break              | Other Anadromous Habitat      | BIA (Native Allotment) |
| Completed Mixed Construction Line | Anadromous Spawning           | Borough                |

NR Team 1 - 7/22/2022 - 1956 - Acres from Mixed Methods - North American 1983 Datum. LatLong Grid