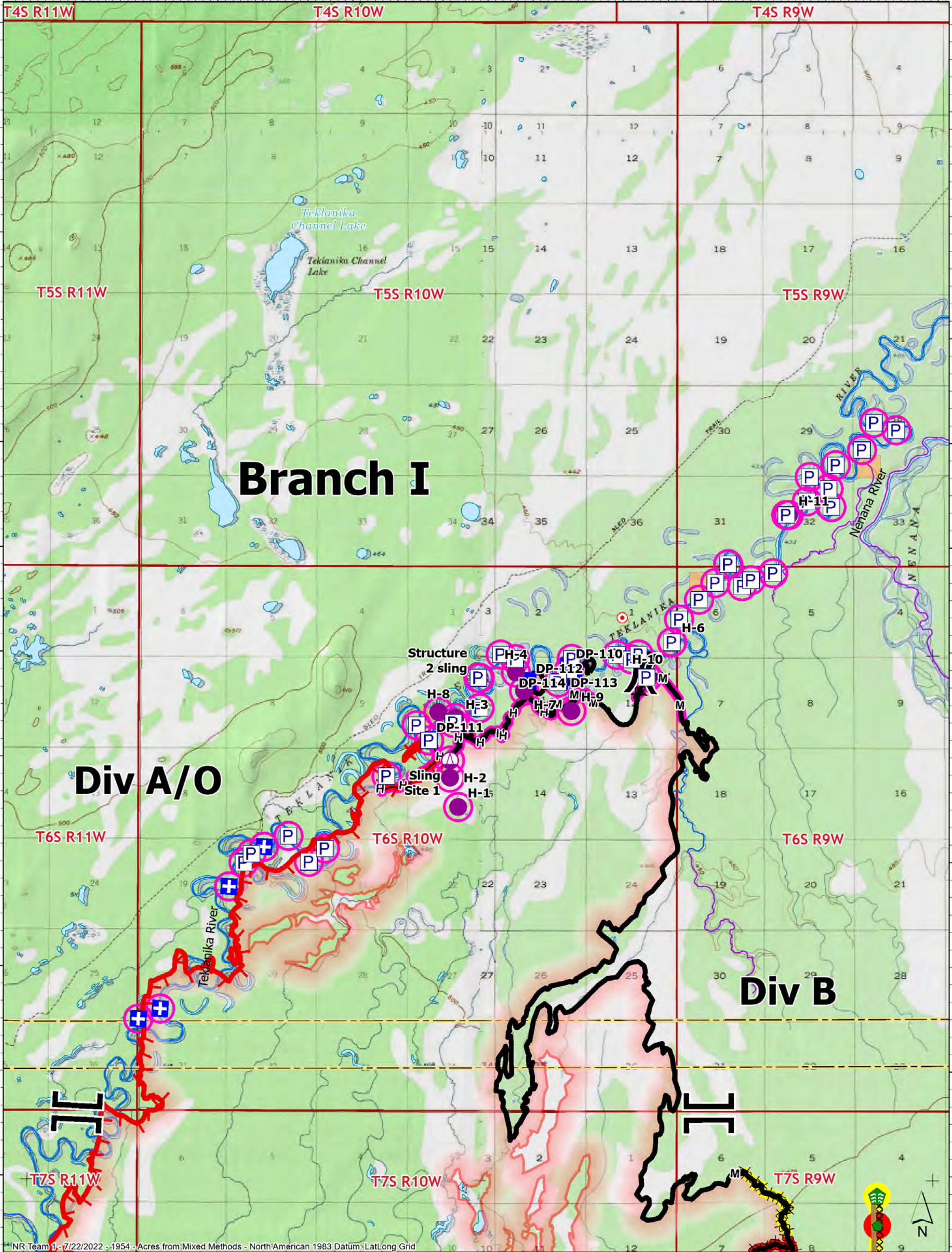


149°40'W 149°35'W 149°30'W 149°25'W 149°20'W



SUPPRESSION REPAIR

Branch I



72,171 acres on 07/20/2022 @ 2345

Repair Status

- In Use - Fire Management
- Repair Needed
- Completed - Ready for Inspection
- No Repair Needed

- P In Use - Fire Management
- Repair Needed
- Completed - Ready for Inspection
- P Pump
- Helispot

- S Sling Site
- X Division Break
- I Branch Break
- + Medical
- Drop Point
- Hot Spot - Spot Fire
- Stream Crossing

- Repair Point
- X Completed Dozer Line
- ^ Completed Fuel Break
- H Completed Hand Line

- Completed Mixed Construction Line
- Repair Line
- Anadromous Spawning
- Other Anadromous Habitat

- Contained
- Uncontained
- Wildfire Daily Fire Perimeter
- BIA (Native Allotment)
- Borough

Miles 0 1 2