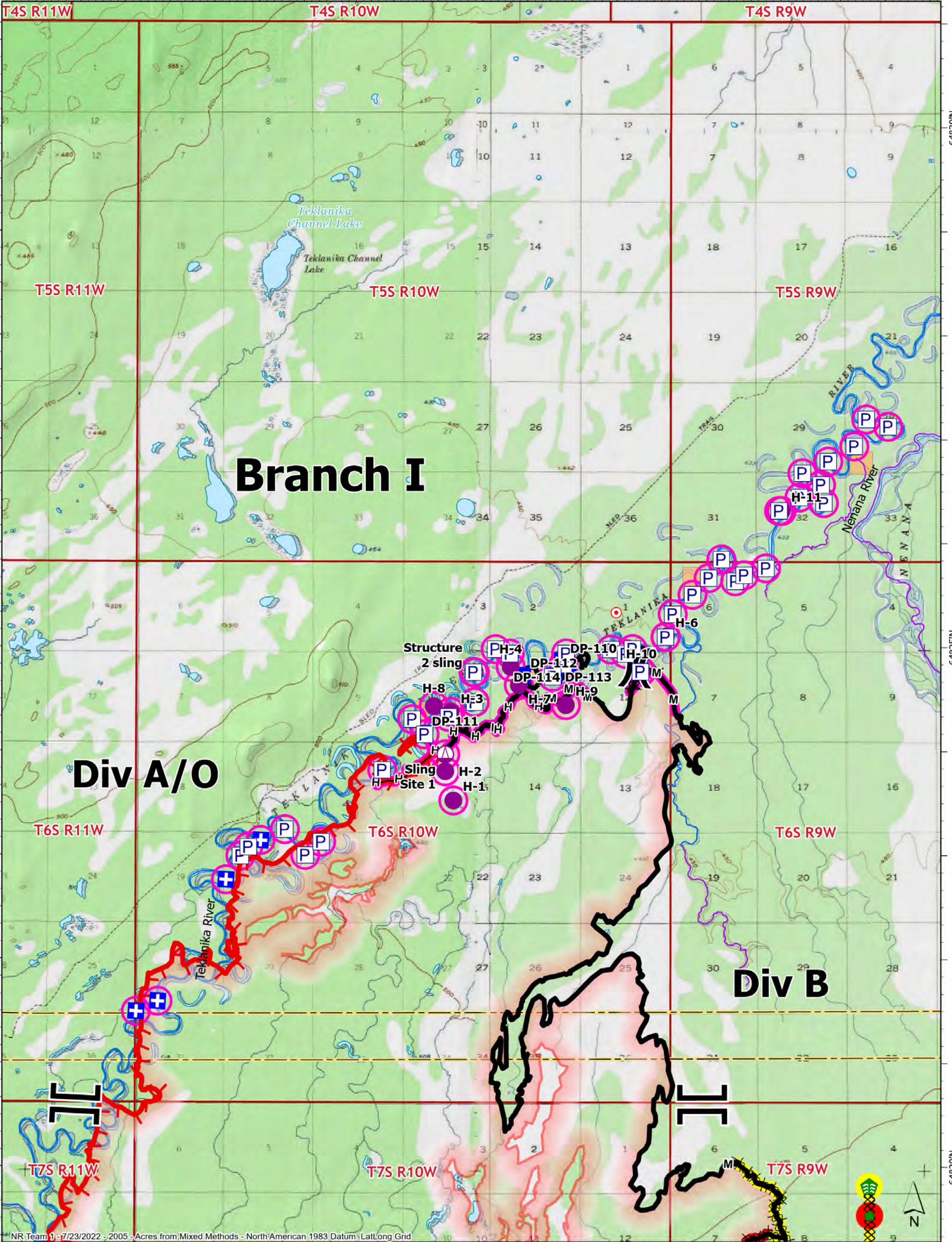


149°40'W 149°35'W 149°30'W 149°25'W 149°20'W



NR Team 1 - 7/23/2022 - 2005 - Acres from Mixed Methods - North American 1983 Datum, Lat/Long Grid

SUPPRESSION REPAIR

Branch I

72,171 acres on 07/23/2022 @ 0145

<p>Repair Status</p> <ul style="list-style-type: none"> ■ In Use - Fire Management ■ Repair Needed ■ Completed - Ready for Inspection ■ No Repair Needed 	<ul style="list-style-type: none"> P In Use - Fire Management P Repair Needed P Completed - Ready for Inspection P Pump ● Helispot 	<ul style="list-style-type: none"> X Sling Site X Division Break I Branch Break + Medical ■ Drop Point ● Hot Spot - Spot Fire 	<ul style="list-style-type: none"> ● Stream Crossing ● Repair Point X Completed Dozer Line X Completed Fuel Break — Completed Hand Line — Completed Mixed Construction Line — Anadromous Spawning — Other Anadromous Habitat 	<ul style="list-style-type: none"> — Contained — Uncontained — Wildfire Daily Fire Perimeter — BIA (Native Allotment) — Borough
--	--	--	--	--

Miles 0 1 2