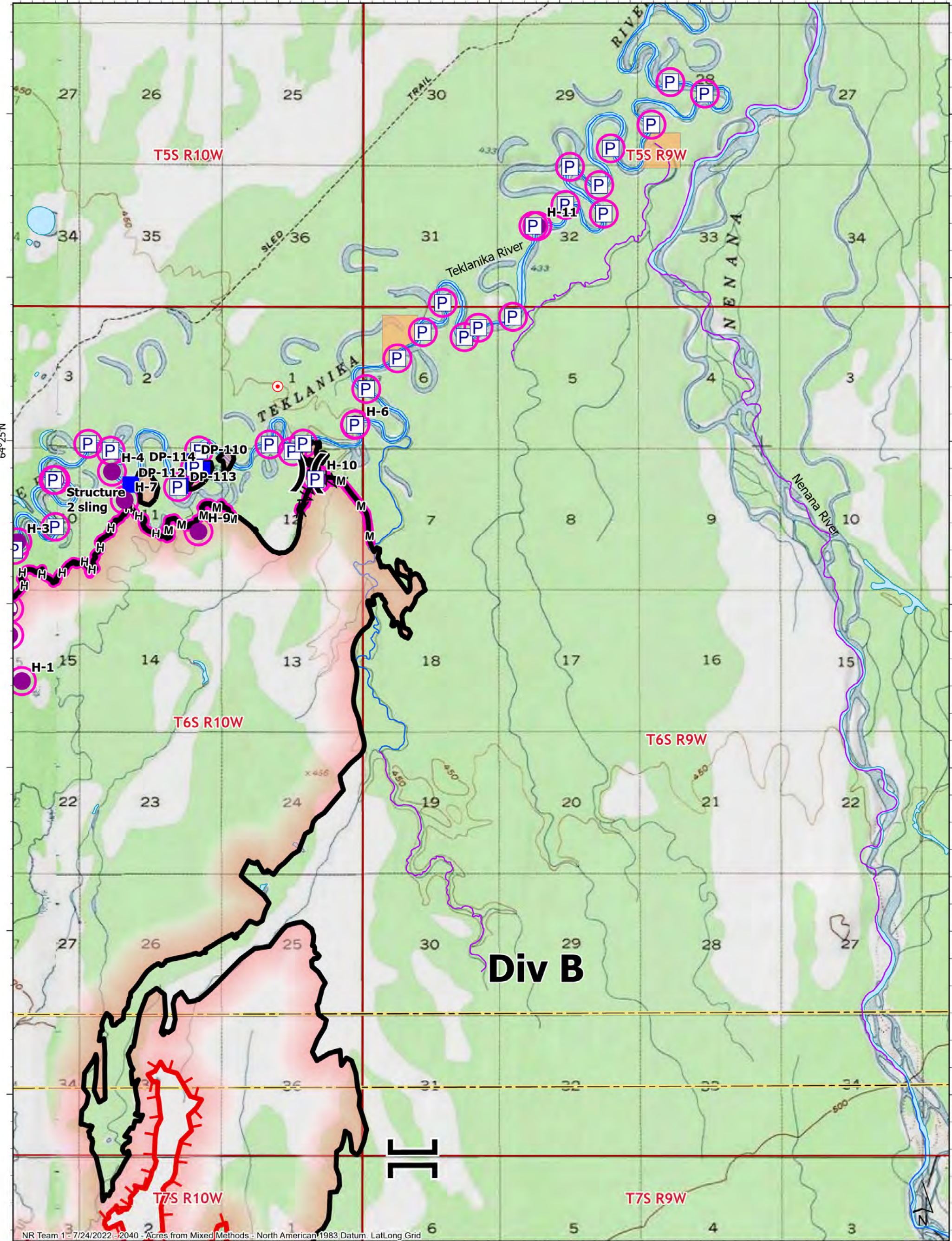


149°30'W

149°25'W

149°20'W



NR Team 1 - 7/24/2022 - 2040 - Acres from Mixed Methods - North American 1983 Datum, LatLong Grid

## SUPPRESSION REPAIR

### Div B

72,185 acres on 07/24/2022 @ 0838



### Repair Status

- In Use - Fire Management
- In Use - Fire Management
- P Pump

- Helispot
- Sling Site
- ⌘ Division Break
- ⌚ Branch Break
- Drop Point
- Hot Spot - Spot Fire

- ⊗ Completed Dozer Line
- ∧∧ Completed Fuel Break
- H— Completed Hand Line

- M— Completed Mixed Construction Line
- Anadromous Spawning
- Other Anadromous Habitat
- Contained

- Uncontained
- Wildfire Daily Fire Perimeter
- BIA (Native Allotment)
- Borough

Miles 0 1