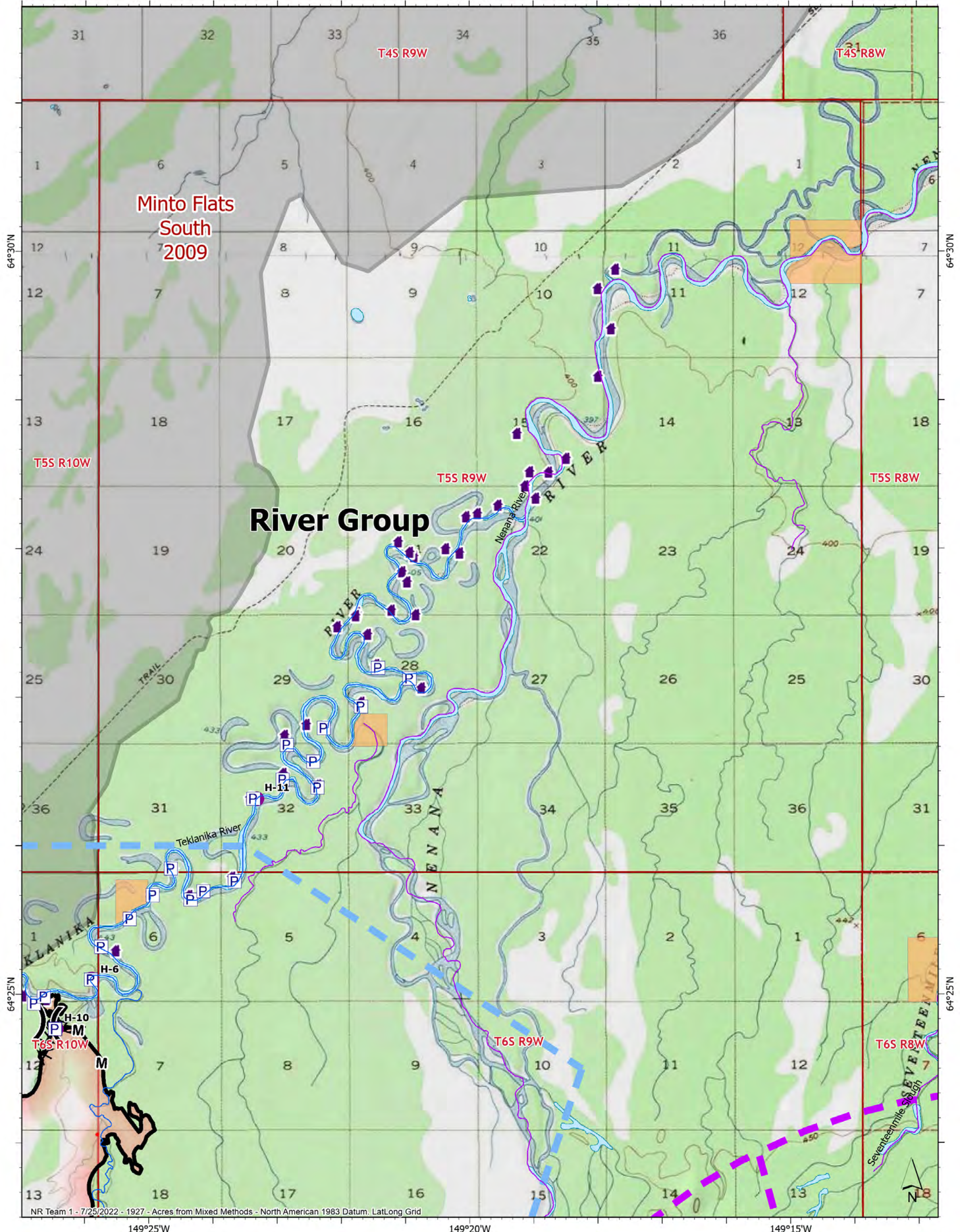


149°25'W

149°20'W

149°15'W



OPERATIONS River Group

72,185 acres on 07/24/2022 @ 0838



Miles 0 0.5 1

- | | | |
|-----------------------------------|-------------------------------|------------------------|
| Pump | Temporary Flight Restriction | Anadromous Spawning |
| Helispot | Military Restricted Airspace | Contained |
| Division Break | Wildfire Daily Fire Perimeter | Structure |
| Completed Fuel Break | IR Isolated Heat Source | Historical Fires |
| Completed Mixed Construction Line | IR Heat Perimeter | BIA (Native Allotment) |
| | Other Anadromous Habitat | Borough |

NR Team 1 - 7/25/2022 - 1927 - Acres from Mixed Methods - North American 1983 Datum. Lat/Long Grid