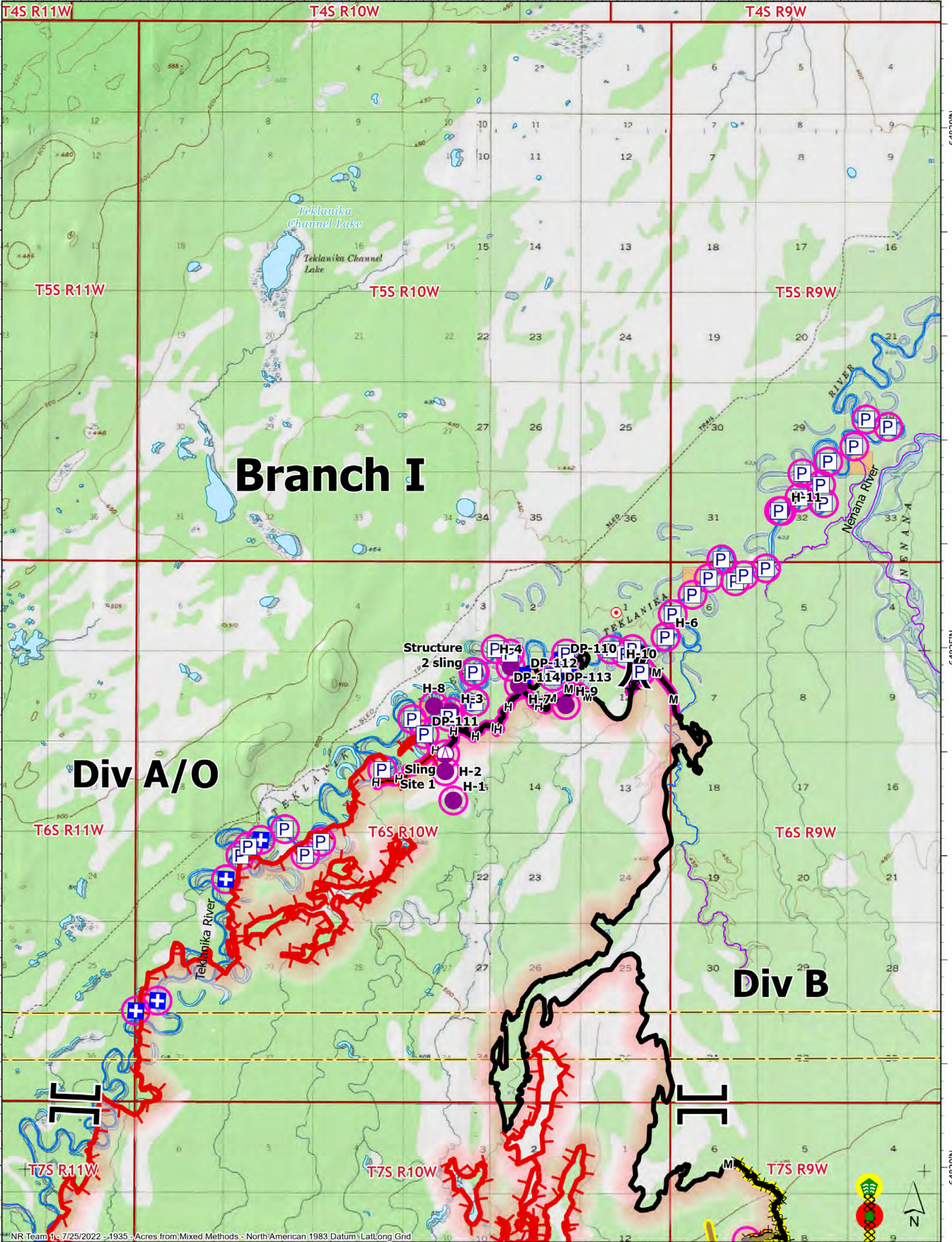


149°40'W 149°35'W 149°30'W 149°25'W 149°20'W



SUPPRESSION REPAIR Branch I
72,185 acres on 07/24/2022 @ 0838

Repair Status	In Use - Fire Management	Repair Needed	Completed - Ready for Inspection	Pump	Helispot	Sling Site	Division Break	Branch Break	Medical	Drop Point	Hot Spot - Spot Fire	Other	Stream Crossing	Repair Point	Completed Dozer Line	Completed Fuel Break	Completed Hand Line	Completed Mixed Construction Line	Uncontained	Wildfire Daily Fire Perimeter	BIA (Native Allotment)	Borough
Repair Needed	Completed - Ready for Inspection	Pump	Helispot	Sling Site	Division Break	Branch Break	Medical	Drop Point	Hot Spot - Spot Fire	Other	Stream Crossing	Repair Point	Completed Dozer Line	Completed Fuel Break	Completed Hand Line	Completed Mixed Construction Line	Repair Line	Anadromous Spawning	Other Anadromous Habitat	Contained	BIA (Native Allotment)	Borough

Miles 0 1 2