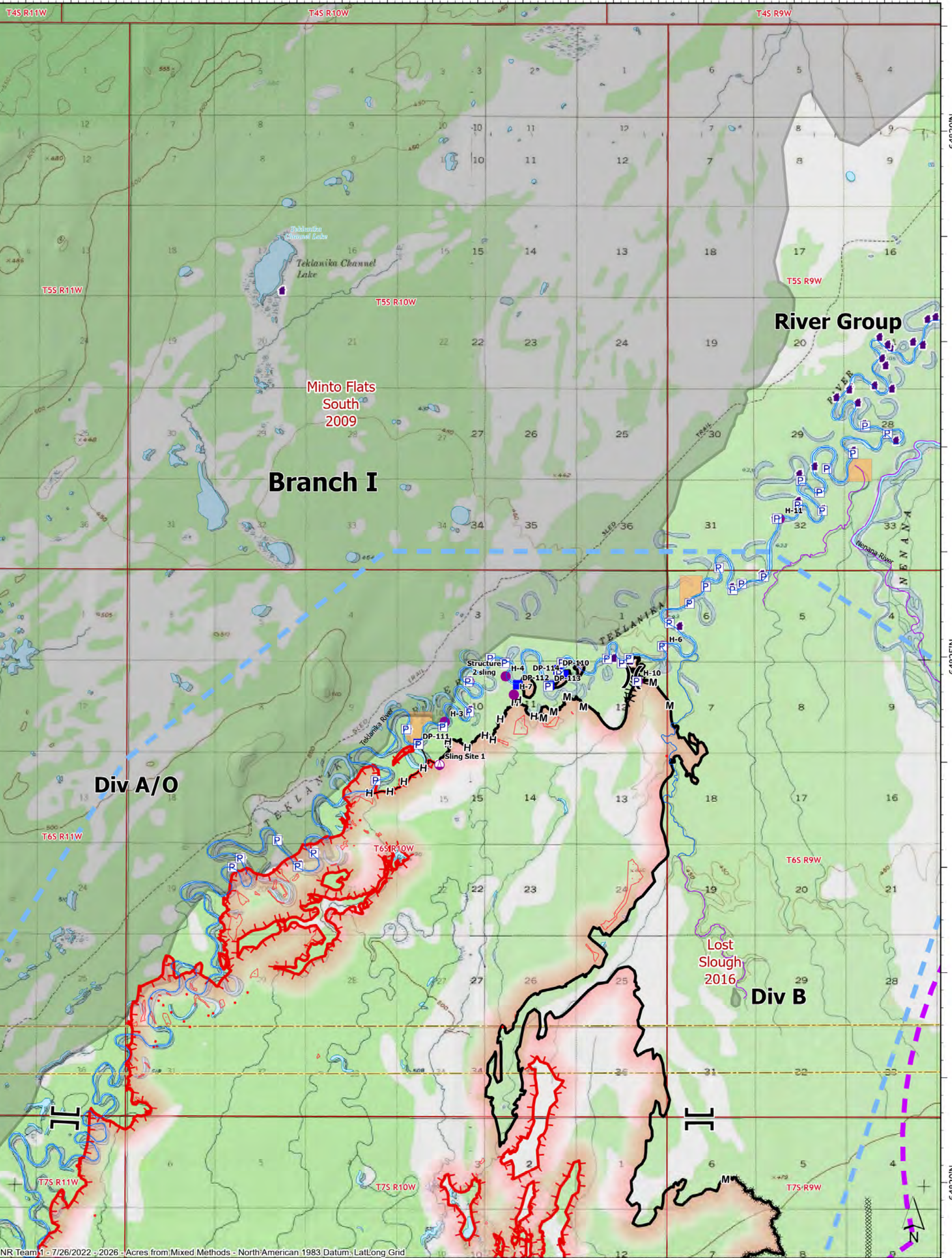


149°40'W 149°35'W 149°30'W 149°25'W 149°20'W



OPERATIONS Branch I

72,185 acres on 07/23/2022 @ 2100



0 0.5 1 2 Miles

- Pump
- Helispot
- Sling Site
- Division Break
- Branch Break
- Drop Point
- Completed Dozer Line
- Completed Fuel Break
- Completed Hand Line
- Completed Mixed Construction Line
- Temporary Flight Restriction
- Military Restricted Airspace
- Wildfire Daily Fire Perimeter
- IR Isolated Heat Source
- IR Heat Perimeter
- IR Intense Heat
- IR Scattered Heat
- Other Anadromous Habitat
- Anadromous Spawning
- Contained
- Uncontained Fireline
- Structure
- Historical Fires
- BIA (Native Allotment)
- Borough